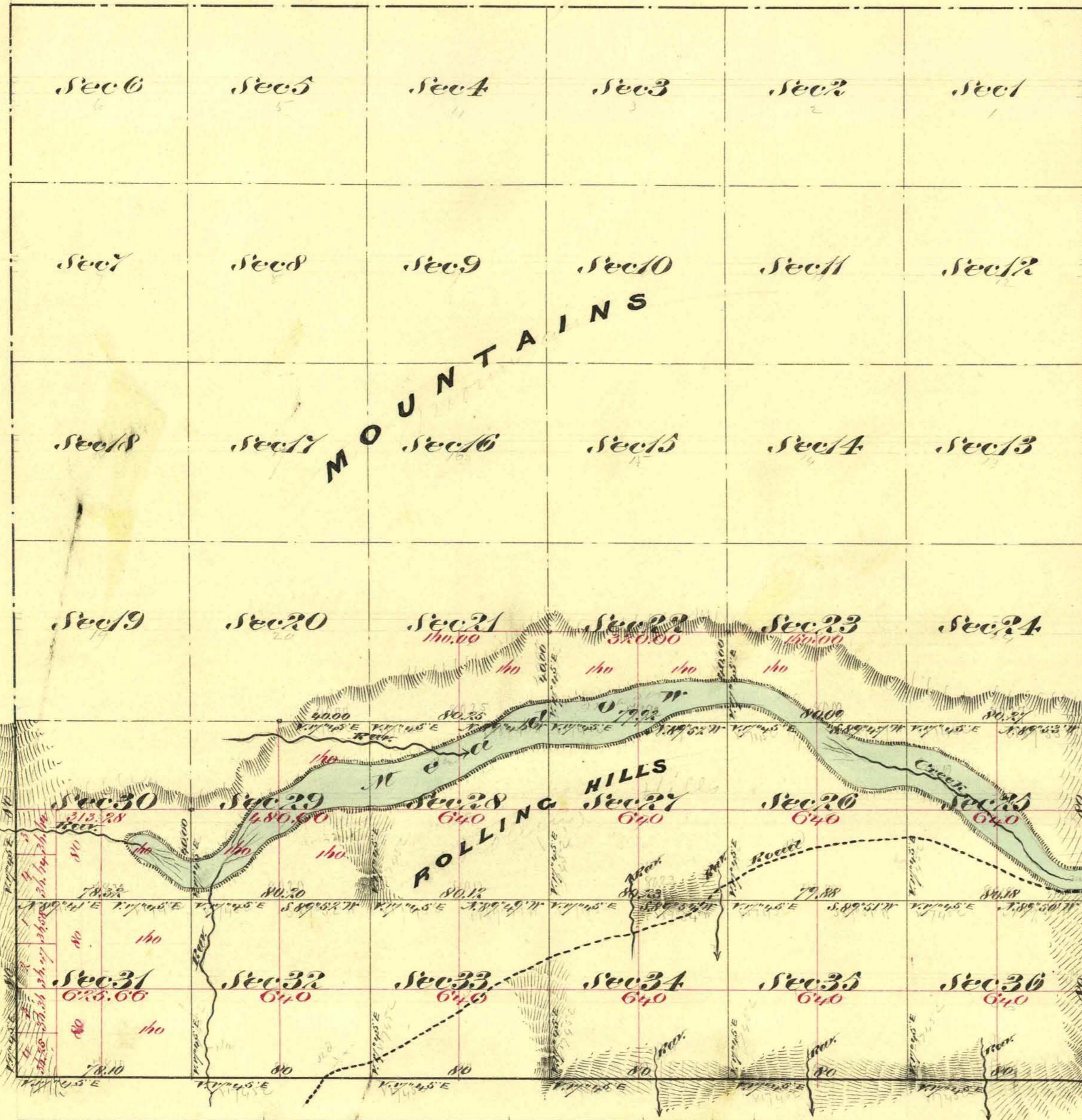


Township N^o 44 North

Range N^o 23 East

Mount Diablo Meridian



Aggregate Area of Public Land Surveyed 7,818.94 Acres
 Estimated " " Mountains unsurveyed 15,134.62 "
 Aggregate 22,953.56 "

Commenced January 22nd 1874
 Completed January 24th 1874

Survey Designated	By Whom Surveyed	Date of Commencement	Am ^t of Survey	When Surveyed
Township Lines	G. N. Sawide & C. Belle	Nov ^r 18 th 1873	9 78 10	1874
Subdivision Lines	" " " " "	" " "	20 79 46	January 1874

The above Map of Township N^o 44 North Range N^o 23 East Mount Diablo Meridian is strictly conformable to the field notes of the Survey thereof on file in this Office, which have been examined and approved
 U.S. Surveyor General's Office
 Virginia City Nevada
 March 25th 1874

E. S. Davis
 U.S. Surveyor General

0404

T 44 N, R 23 E.
 V.D.