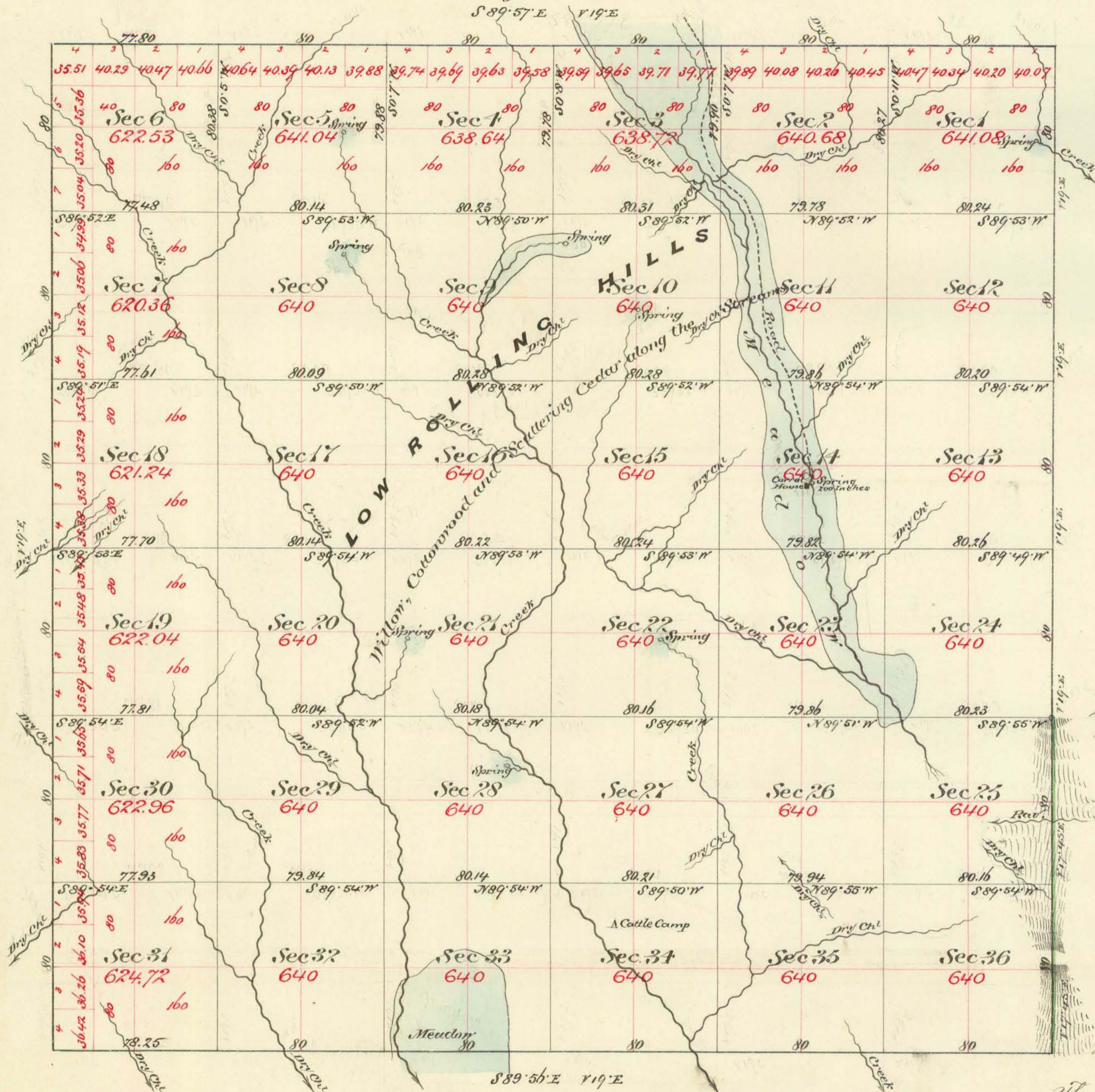


Township N^o 44 North

Range N^o 22 East

Mount Diablo Meridian



Aggregate area of Public Land surveyed 27,934.01 Acres.

Commenced April 27th 1877
Completed May 4th "

Subdivision lines not otherwise noted run with a Variation of 19° East

Surveys designated	By whom surveyed	Date of Contract	Acres of Survey	When surveyed
East boundary (quar)	Gavide & Preble	Nov. 18 th 1873	2 - 00 - 00	1874
Rest of Township lines	G. W. Gavide	" 11 th 1876	21 - 76 - 05	1877
Subdivision "	" " "	" " "	59 - 71 - 59	April & May 1877

79 Cor.
61
77
"

The above Map of Township N^o 44 North Range N^o 22 East Mount Diablo Meridian is strictly conformable to the field notes of the survey thereof on file in this office which have been examined and approved
U.S. Surveyor General's office
Virginia City Nevada
June 20th 1877

E. S. Paris
U.S. Surveyor Genl. Nev.