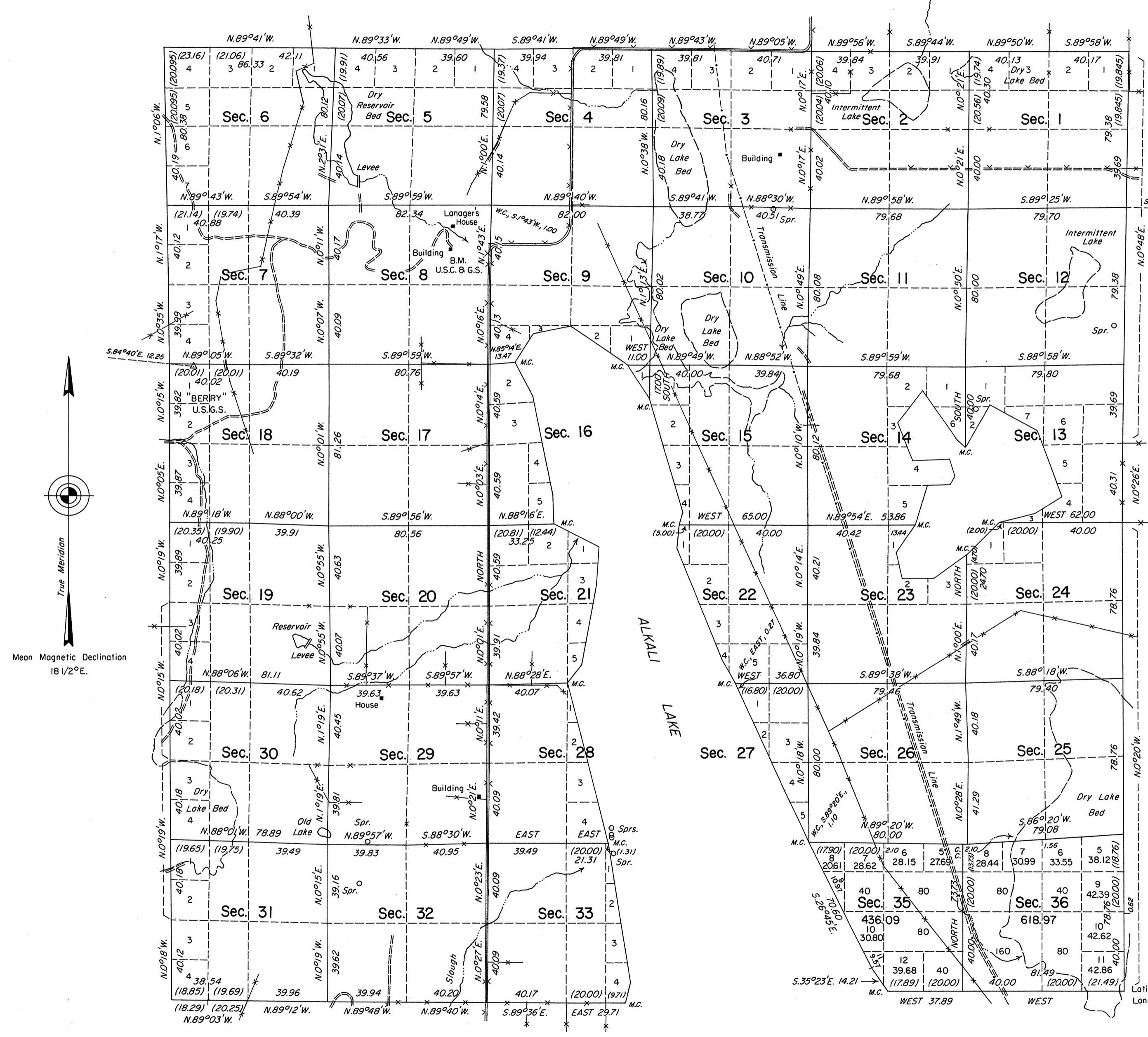


ORIGINAL

TOWNSHIP 44 NORTH, RANGE 19 EAST, OF THE MOUNT DIABLO MERIDIAN, NEVADA
DEPENDENT AND INDEPENDENT RESURVEYS AND SURVEY



History of the earlier surveys is contained in the field notes.

This plat represents a dependent resurvey of a portion of the south boundary, the east, west and north boundaries and a portion of the subdivisional lines of T. 44 N., R. 19 E., designed to restore the corners in their true original locations according to the best available evidence; a survey of a portion of the south boundary; and an independent resurvey and survey of a portion of the subdivisional lines and meander lines of Alkali Lake superseding a portion of the plat approved January 28, 1881.

Lottings and areas, except as shown hereon, are as shown on the plat approved January 28, 1881.

Survey executed by James A. Mack, Cadastral Surveyor, beginning August 20, 1985 and completed October 17, 1986, under Special Instructions dated June 13, 1985, Supplemental Special Instructions dated September 23, 1985, and Supplemental Special Instructions dated October 2, 1986, for Group No. 622, Nevada.

UNITED STATES DEPARTMENT OF THE INTERIOR
BUREAU OF LAND MANAGEMENT

Reno, Nevada July 21, 1987

This plat is strictly conformable to the approved field notes, and the survey, having been correctly executed in accordance with the requirements of law and the regulations of this Bureau, is hereby accepted.

Sec. 31

For the Director
Lacel E. Bland
Chief Cadastral Surveyor

Latitude 41°41'04.8"N.
Longitude 119°47'22.6"W.

CKU
7/31/87