

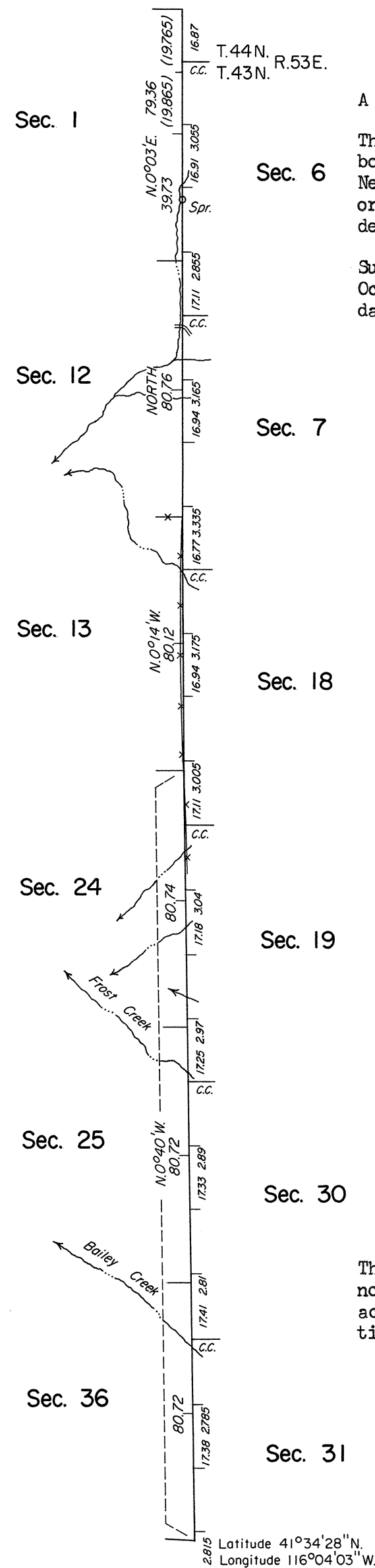
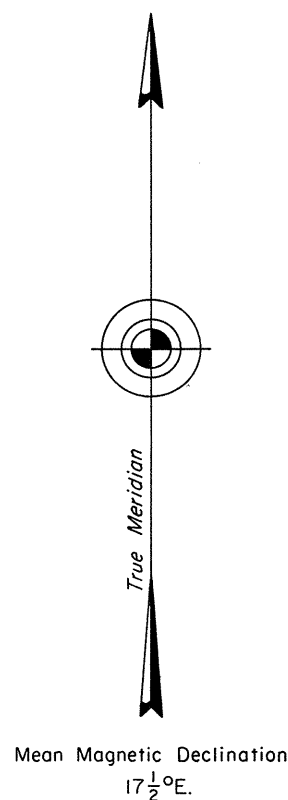
# TOWNSHIP 43 NORTH, RANGE 52 EAST, OF THE MOUNT DIABLO MERIDIAN, NEVADA

## DEPENDENT RESURVEY

OFFICIALLY FILED  
NEVADA STATE OFFICE  
10:00 a.m. June 12, 1978

Surveyed by  
*Hatch and Eaton*  
in 1871

Surveyed by  
*Steward and McClellan*  
in 1884



A history of surveys is contained in the field notes.  
This plat represents a dependent resurvey of the east boundary of T. 43 N., R. 52 E., Mount Diablo Meridian, Nevada, designed to restore the corners in their true original locations according to the best available evidence.  
Survey executed by Duane R. Garoutte, Cadastral Surveyor, October 11 to November 17, 1977, under Special Instructions dated May 28, 1976, for Group No. 540, Nevada.

UNITED STATES DEPARTMENT OF THE INTERIOR  
BUREAU OF LAND MANAGEMENT  
Washington, D.C. May 19, 1978  
This plat is strictly conformable to the approved field notes, and the survey, having been correctly executed in accordance with the requirements of law and the regulations of this Bureau, is hereby accepted.

For the Director  
*Bernard W. Hooper*  
Chief, Division of Cadastral Survey

