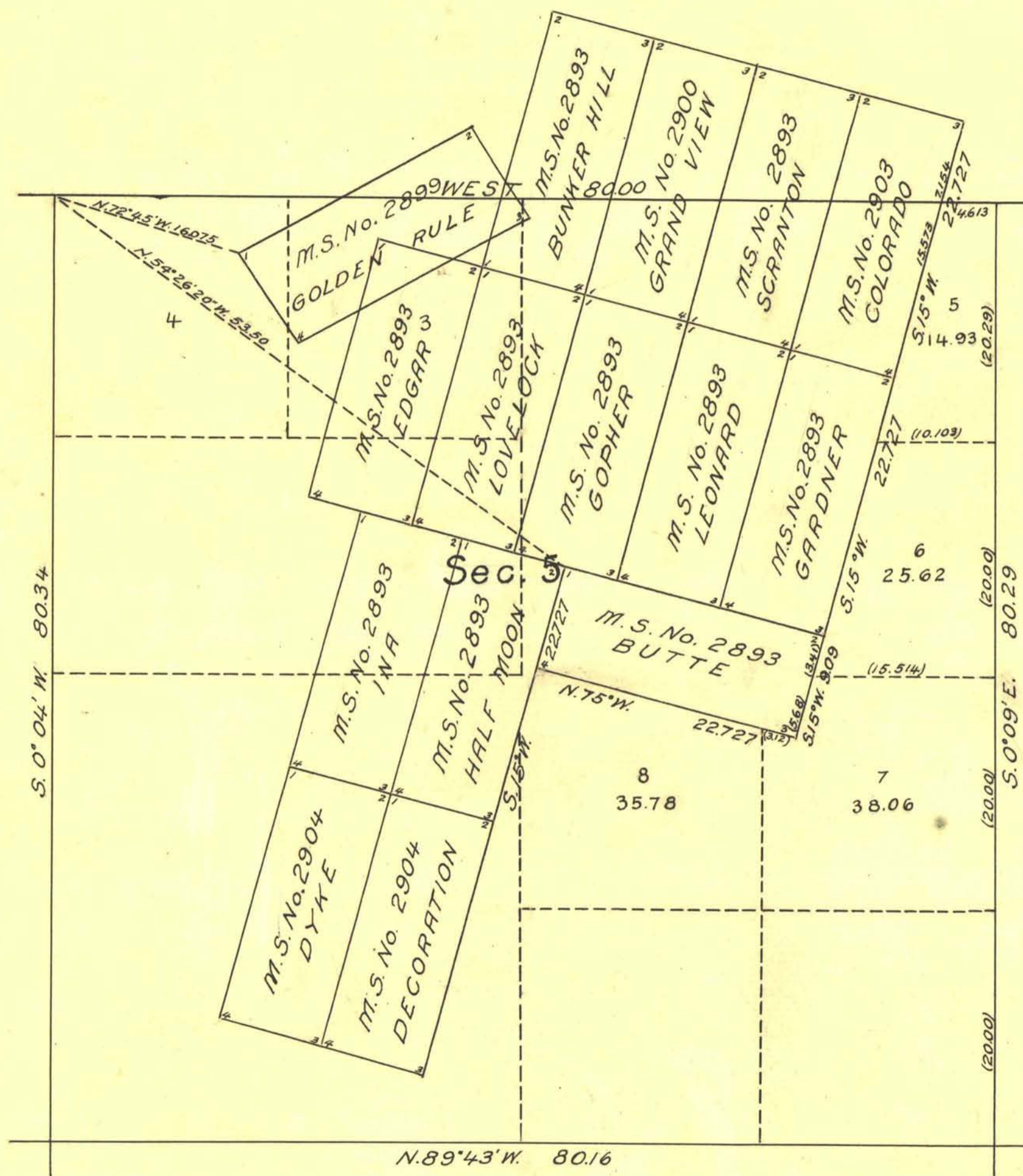


TOWNSHIP N°43 NORTH RANGE N°52 EAST
OF THE MOUNT DIABLO MERIDIAN NEVADA
SUPPLEMENTAL PLAT OF SEC. 5

SCALE 10 CHS. TO 1 INCH



Public Survey Office

Reno, Nevada, September 16, 1929.

The above supplemental plat of Sec. 5, Township No. 43 North, Range No. 52 East, of the Mount Diablo Meridian Nevada, based upon the plat approved August 23, 1884, showing lottings of fractional areas created by the segregation of Bunker Hill, Scranton, Lovelock, Gopher, Leonard, Gardner, Half Moon and Butte lodges of Min. Sur. No. 2893, Golden Rule lodge of Min. Sur. No. 2899, Grand View lodge of Min. Sur. No. 2900 and Colorado lodge of Min. Sur. No. 2903, to accommodate stock raising homestead applications 017116 and 016894 Carson City series, prepared in accordance with instructions contained in the Commissioner's letter N dated July 11, 1929, is hereby approved.

Ralph W. Nelson
Office Cadastral Engineer

DEPARTMENT OF THE INTERIOR
GENERAL LAND OFFICE

Washington, D.C., October 2, 1929

The amended lottings represented by this supplemental plat having been correctly made in accordance with the regulations of this office, the plat is hereby accepted.

Thos C Howell
Assistant Commissioner