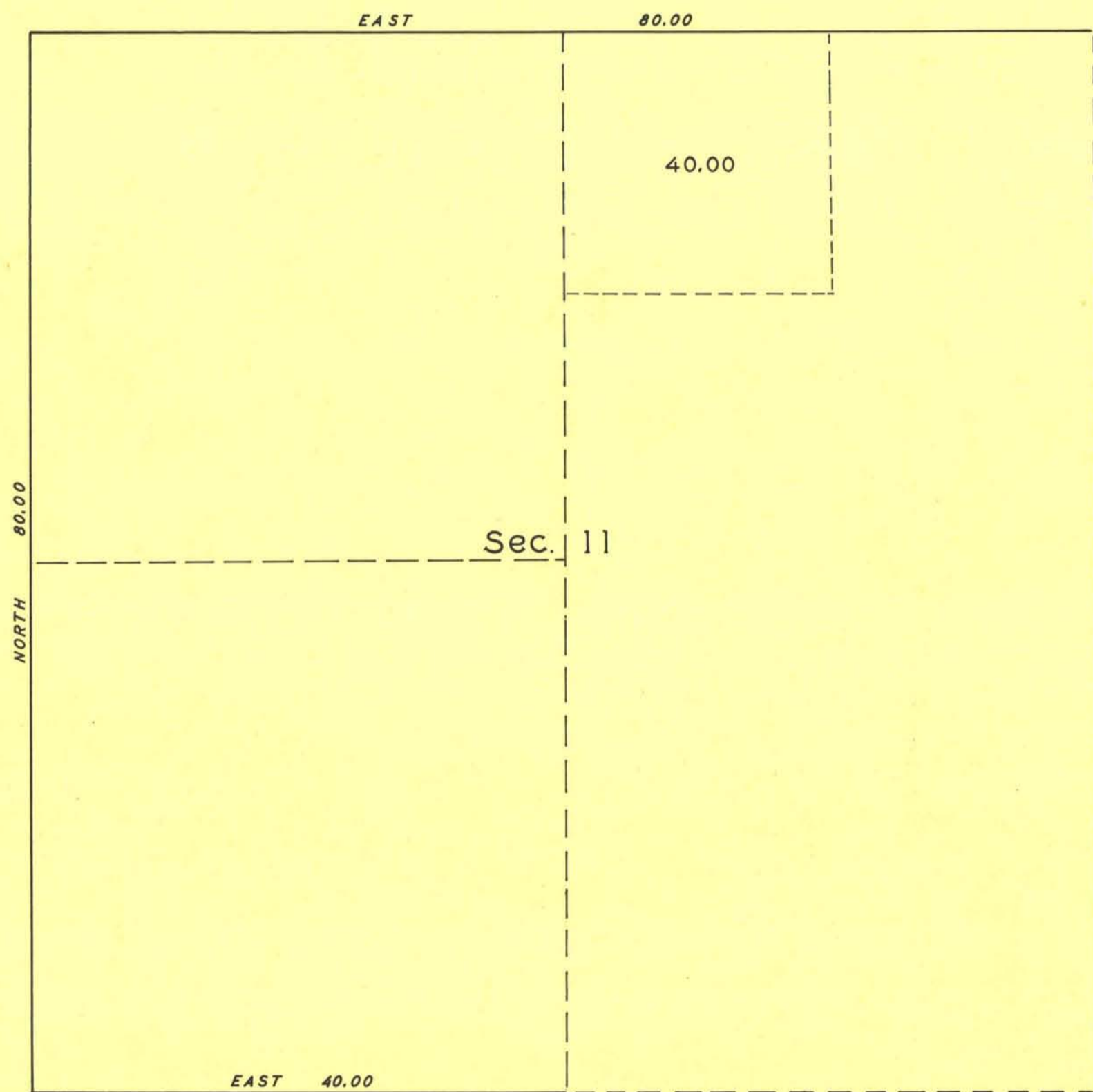


TOWNSHIP NO. 43 NORTH, RANGE NO. 51 EAST, MOUNT DIABLO MERIDIAN, NEVADA

SUPPLEMENTAL PLAT OF SECTION 11

SCALE: 10 CHAINS TO AN INCH



UNITED STATES  
 DEPARTMENT OF THE INTERIOR  
 GENERAL LAND OFFICE  
 WASHINGTON, D. C., APRIL 17, 1939.

This supplemental plat of Section 11, Township 43 North, Range 51 East, Mount Diablo Meridian, Nevada, based upon the plat approved May 10, 1871, returning an area for NW $\frac{1}{4}$ NE $\frac{1}{4}$ , having been correctly prepared, is hereby approved.

*Joel David Wolfson*  
 Acting Assistant Commissioner.

*J.S. Wolfson*