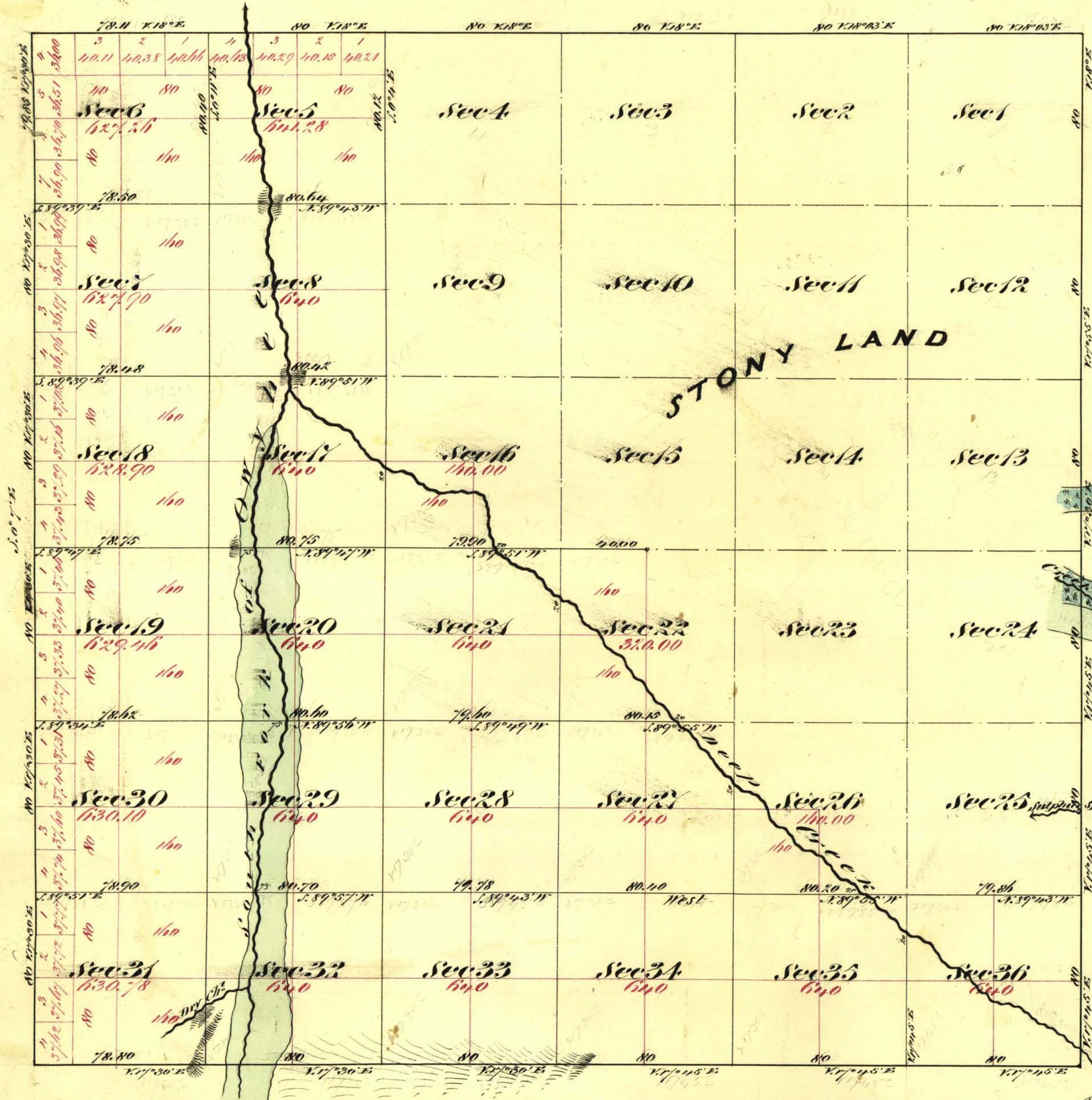


Township N^o 43 North

Range N^o 50 East

Mount Diablo Meridian



Aggregate Area of Public Land (Surveyed) 12,735.68 Acres
 Estimated " " Mountain Land (unsurveyed) 10,241.92. "
Aggregate 22,977.60. "

Commenced February 7th 1872
 Completed " 10th "

Subdivision lines not otherwise noted run with a deviation of 1/2^o East
 The above Map of Township N43 North Range N50 East, Mount Diablo Meridian is strictly conformable to the field notes of the Surveys thereof on file in this Office which have been examined and approved
 U. S. Surveyor General's Office
 Virginia City, Nevada
 March 15th 1872

Surveys Designated	By Whom Surveyed	Date of Contract	Amt of Surveys Mls. Acs. Ecs.	When Surveyed
North & East Boundary of Sp	A. J. Hatch & J. H. Eaton	February 6 th 1871	" 78 "	1871
North & West " " "	A. J. Hatch & J. L. Smyles	December 15 th 1871	" 78 65	1872
Subdivision lines	" " " "	" " "	35. 36 77	February 1872

E. S. Paris
 U. S. Surveyor General Nevada