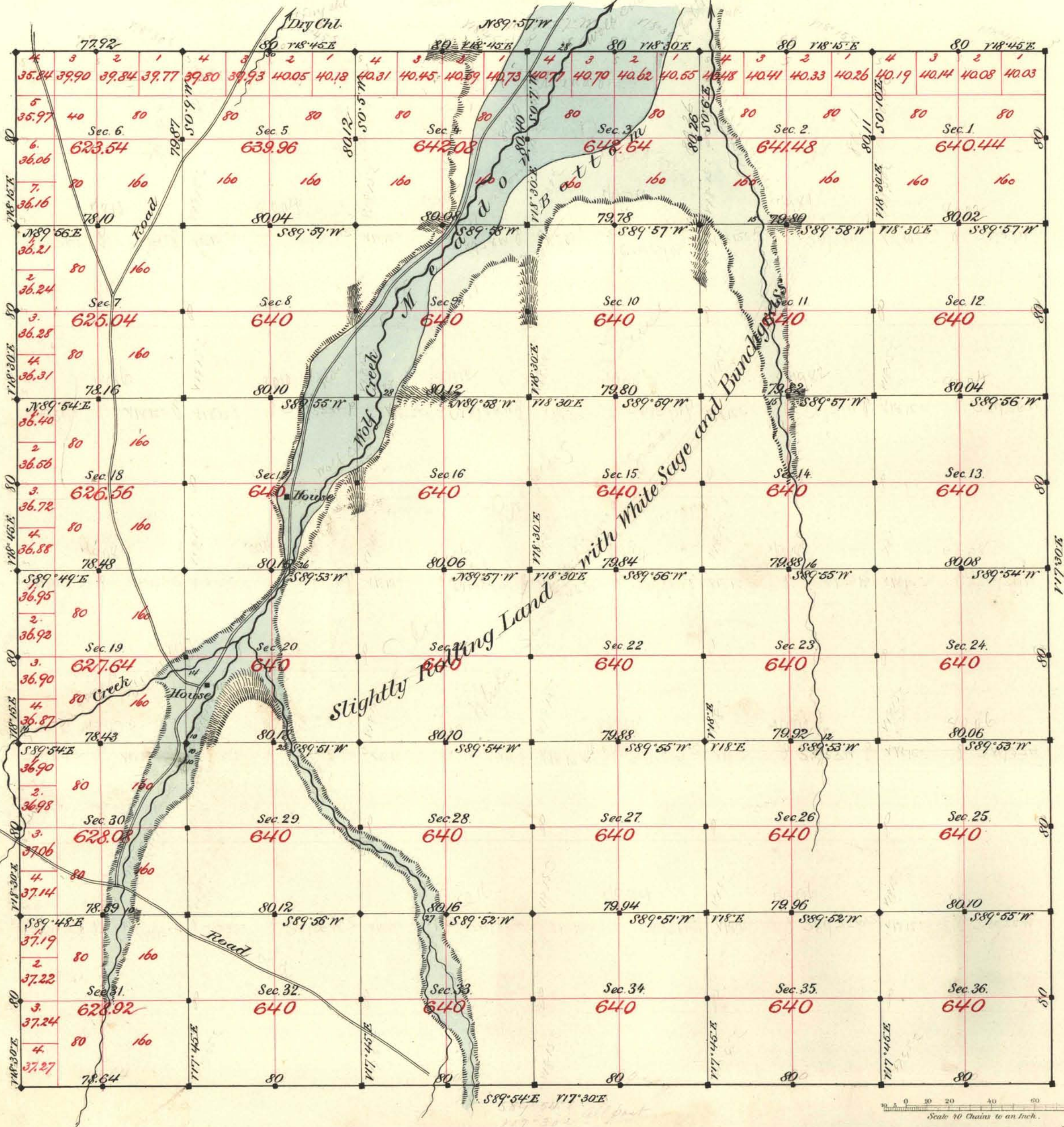


TOWNSHIP N<sup>o</sup> 43 NORTH RANGE N<sup>o</sup> 48 EAST MOUNT DIABLO MERIDIAN



Aggregate Area of Public Land Surveyed 22,966.38 Acres

Commenced May 7<sup>th</sup> 1883  
Completed " 14<sup>th</sup> "

Subdivisions not noted run with a Var. of 18° 15' East

Survey Designated	By Whom Surveyed	Date of Contract	Amount of Surveys	When Surveyed	79 Cont.
S. Body & S. Body	Waltch & Eaton	April 1 <sup>st</sup> 1873	11-78-84	1873	56
N. & W. Subdiv.	Smyle & Polypachich	Mar. 10 <sup>th</sup> 1883	11-77-92	1883	163
	"	"	59-72-56	May	"

The above Map of Township N<sup>o</sup> 43 North of Range N<sup>o</sup> 48 East  
Mt Diablo Meridian is strictly conformable to the field  
notes of the survey thereof on file in this Office, which have been examined and approved.  
Surveyor General's Office. } *L. C. Covring*  
New Nevada } Sup. Gen. Ser.  
August 9<sup>th</sup> 1883