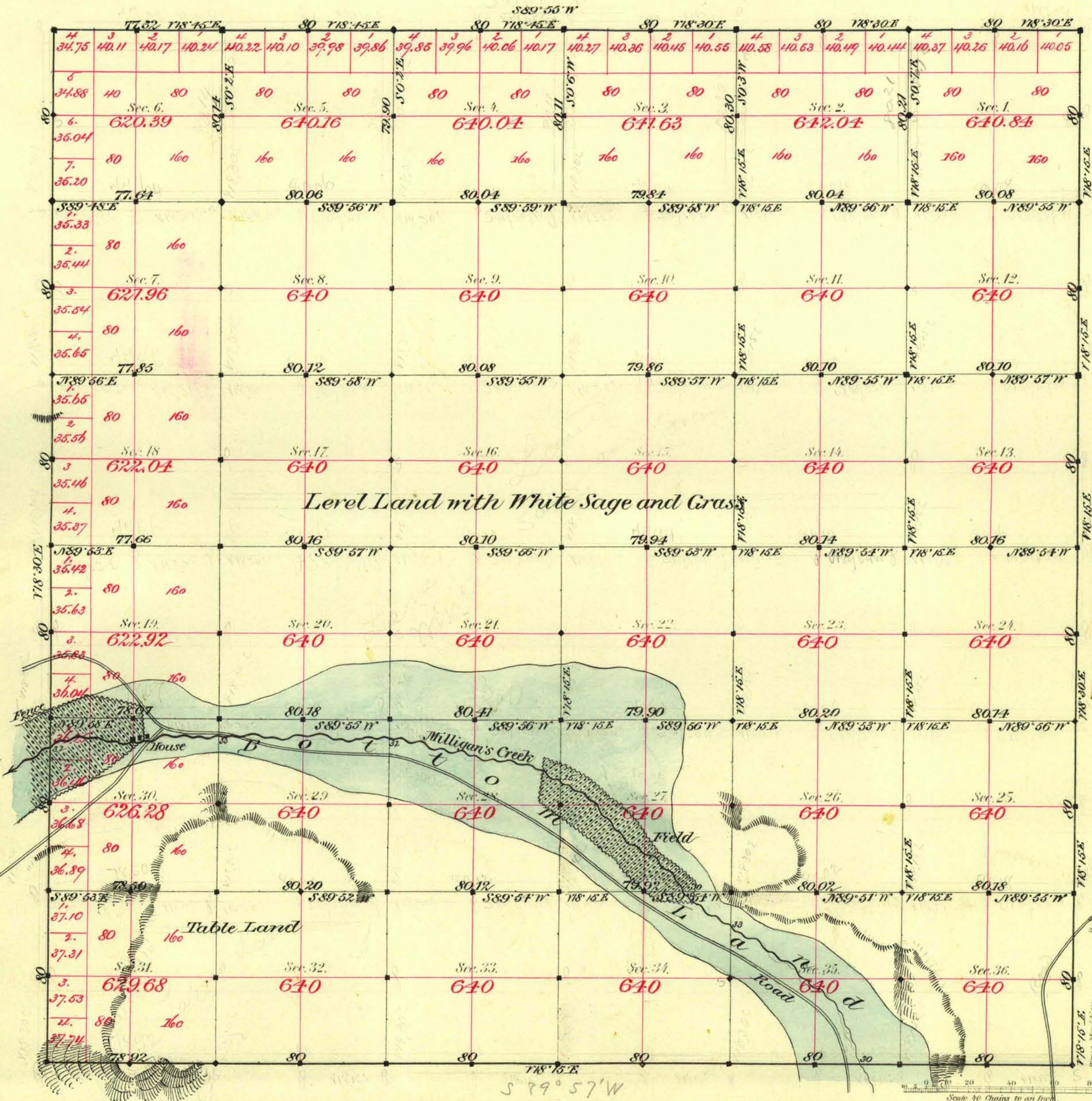


TOWNSHIP N^o 43 NORTH RANGE N^o 46 EAST MOUNT DIABLO MERIDIAN



Aggregate Area of Public Land Surveyed 22,947.98 Ac.

Level Land with White Sage and Grass

Commenced June 19th 1883
Completed " 25th "

Subdivisions not noted run with a Variation of 18' 30" East

Surveys Designated	By Whom Surveyed	Date of Contract	Amount of Surveys	When Surveyed
N + S. Bdy.	Bell & Bell	July 15 th 1882	11 - 78 - 32	1882
N + E. "	Smyles & Fitzpatrick	March 10 th 1883	11 - 77 - 32	1883
Subdivns.	"	"	59 - 72 - 47	June "

7th Cont
147
163

The above Map of Township N^o 43 North of Range N^o 46 East
Mt Diablo Meridian is strictly conformable to the field
notes of the survey thereof on file in this Office, which have been examined and approved.
Surveyor General's Office. } L. C. Downing
Reno Nevada } Sur. Gen.
August 9th 1883