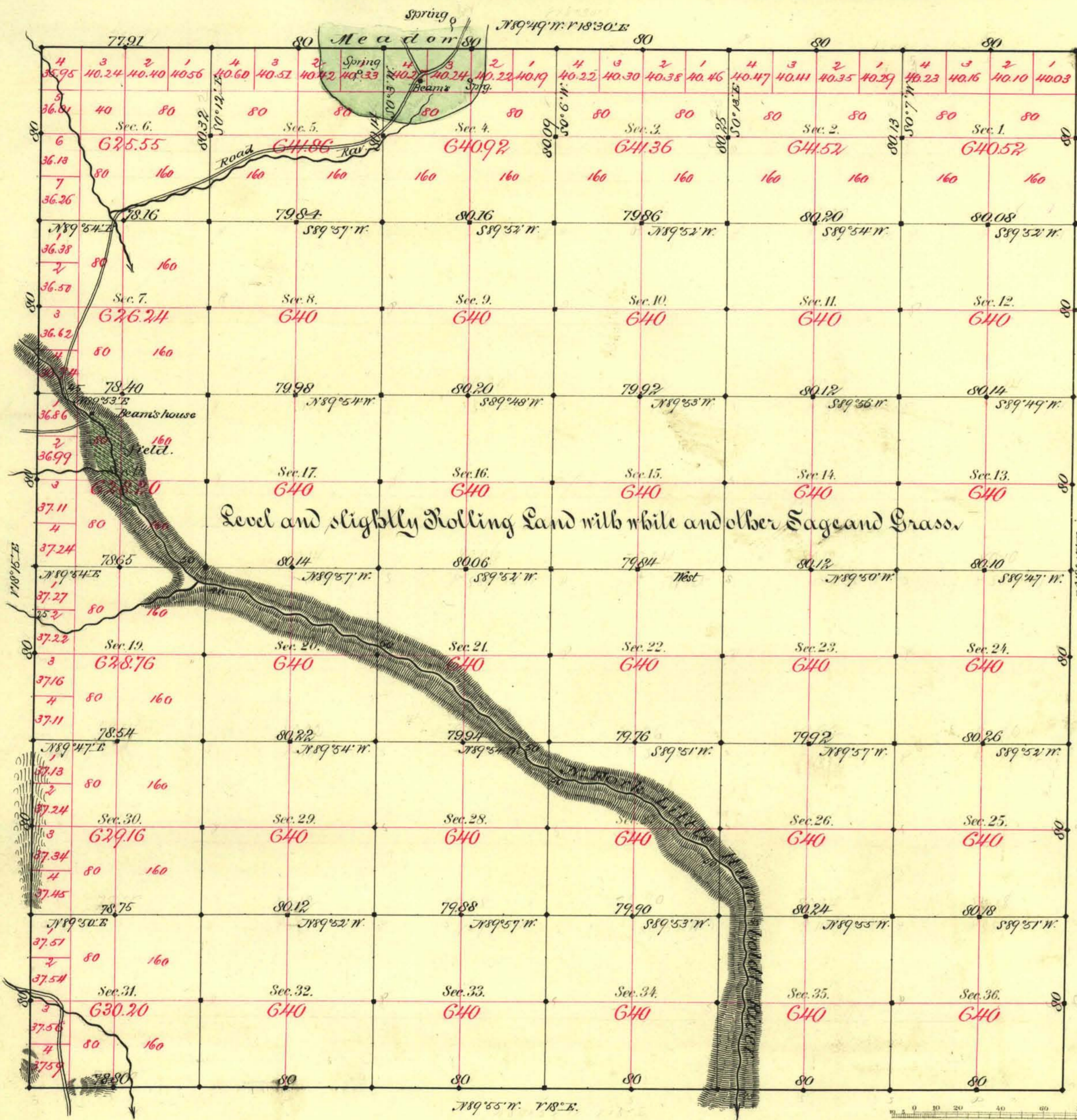


TOWNSHIP N^o 43 NORTH RANGE N^o 43 EAST MOUNT DIABLO MERIDIAN



Aggregate Area of Public Land surveyed 22974.29 ac.

For connections see R 44

Commenced Sept. 15th 1882.
Completed . 21st .

Subdivisions run with a variation of 18' 30\"/>

Survey Designated	By Whom Surveyed	Date of Contract	Amount of Survey	When Surveyed
Township lines	John A. Morrison	July 21 st 1882	23-76-141	1882
Subdivisions	"	"	59-74-61	September

77th Corr.
150

The above Map of Township N^o 43 North of Range N^o 43 East of Mt. Diablo Meridian is strictly conformable to the field notes of the survey thereof on file in this Office, which have been examined and approved.

Surveyor General's Office }
 Reno, Nevada }
 November 6th 1882 }
 W. S. Davis }
 Sur. Gen. Nevada }

A. L. Bancroft & Co. Lith. S. F.