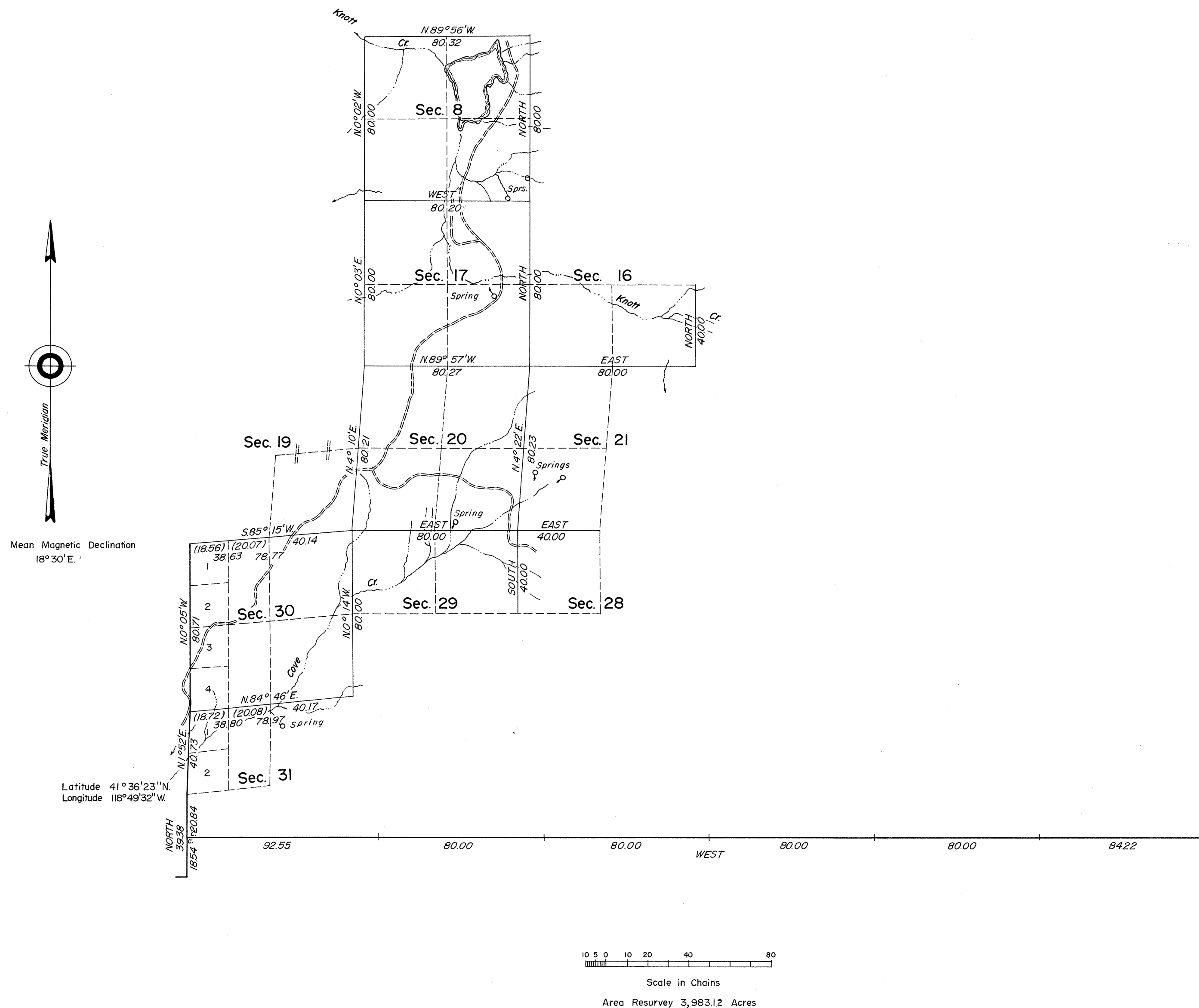


TOWNSHIP 43 NORTH, RANGE 28 EAST, OF THE MOUNT DIABLO MERIDIAN, NEVADA
DEPENDENT RESURVEY



History of earlier surveys is contained in the field notes.

This plat represents a dependent resurvey of a portion of the west boundary and a portion of the subdivisional lines of T. 43 N., R. 28 E., Mount Diablo Meridian, Nevada, designed to restore the corners in their true original locations, according to the best available evidence. Lottings and areas are as shown upon the plat approved April 17, 1873.

The survey was executed by Lancel E. Bland, June 18 to July 20, 1962, under Special Instructions dated March 13, 1962, for Group No. 400, Nevada.

UNITED STATES DEPARTMENT OF THE INTERIOR
BUREAU OF LAND MANAGEMENT
Washington, D. C. April 14, 1964

This plat is strictly conformable to the approved field notes, and the survey, having been correctly executed in accordance with the requirements of law and the regulations of this Bureau, is hereby accepted.

For the Director

E. E. Livingston

Chief, Division of Engineering

0664-A

T43N, R28E.