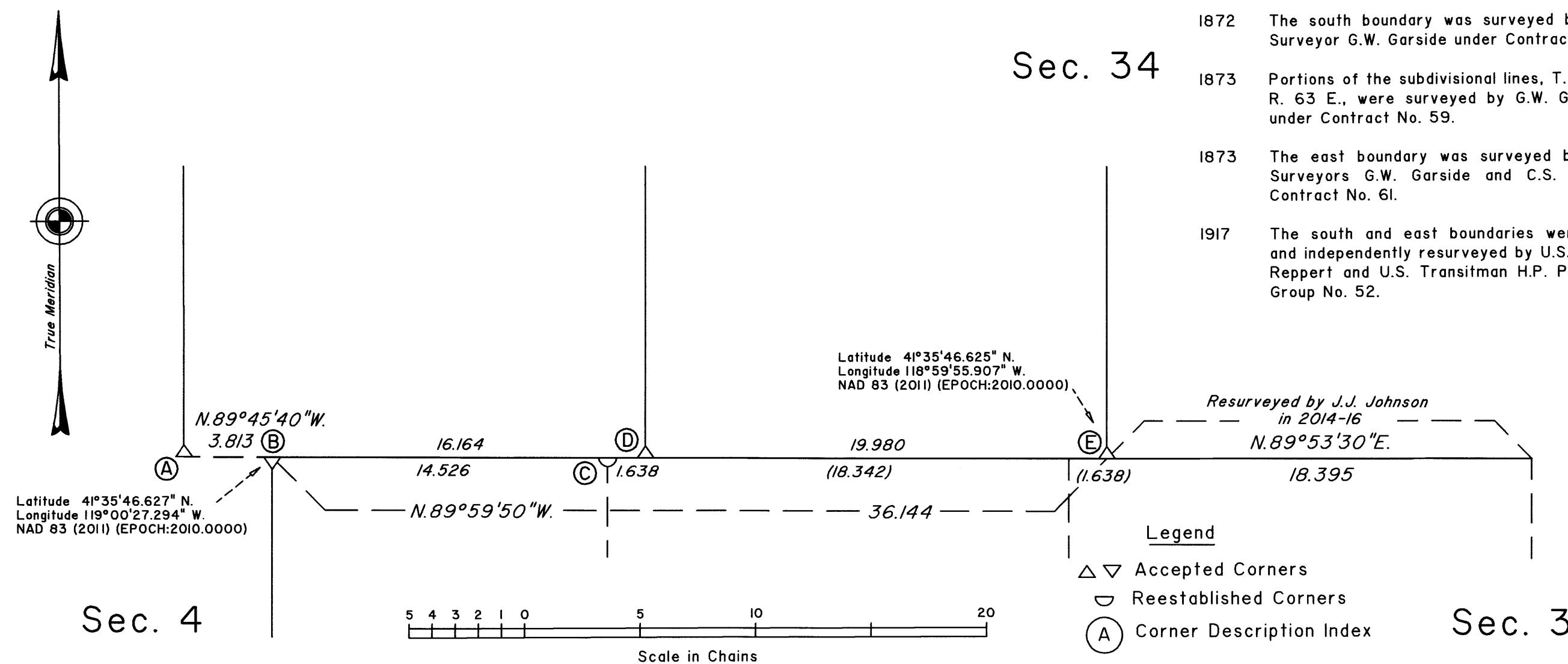


TOWNSHIP 43 NORTH, RANGE 26 EAST, OF THE MOUNT DIABLO MERIDIAN, NEVADA

CORRECTIVE DEPENDENT RESURVEY



This plat represents the entire record of the corrective dependent resurvey of a portion of the south boundary, Township 43 North, Range 26 East, Mount Diablo Meridian, Nevada.

The history of previous surveys is as follows:

- 1872 The south boundary was surveyed by U.S. Deputy Surveyor G.W. Garside under Contract No. 55.
- 1873 Portions of the subdivisional lines, T. 42 N., R. 63 E., were surveyed by G.W. Garside in 1873 under Contract No. 59.
- 1873 The east boundary was surveyed by U.S. Deputy Surveyors G.W. Garside and C.S. Prebble under Contract No. 61.
- 1917 The south and east boundaries were dependently and independently resurveyed by U.S. Surveyor H.W. Reppert and U.S. Transitman H.P. Purlington under Group No. 52.

1917 The west and north boundaries and the subdivisional lines were surveyed by U.S. Surveyor H.W. Reppert and U.S. Transitman H.P. Purlington under Group No. 52.

2014-16 A portion of the south boundary and subdivisional lines were dependently resurveyed and section 34 was subdivided by Joseph J. Johnson, Cadastral Surveyor, under Group No. 936.

Other surveys remote to this area are not included.

Survey executed by Bradley F. Dillon, Cadastral Surveyor, and Mark G. Petrosine, Surveying Technician, beginning and completed on July 27, 2017, pursuant to Special Instructions dated July 12, 2017, for Group No. 970, and assignment instructions dated July 12, 2017.

Memorandum by the Cadastral Office Section Chief, dated Feb. 13, 2017, documents the improper determination of the 80 1/16 sec. cor. of sec. 3, T. 42 N., R. 26 E., and this corrective dependent resurvey reflects the change.

For the lines not showing bearings and distances, refer to the official record of the prior surveys.

The rules of proportionate measurement were applied in order to ascertain the position of determined corners, after completing the necessary retracements to connect with identified corner locations.

Measurements were made with Trimble R-10 Global Positioning System receivers using the real-time kinematic (RTK) method and refer to the true meridian based on geodetic methods. The mean bearings of the lines and horizontal equivalents of ground distances only are entered in this record.

The NAD 1983 (2011) (EPOCH:2010.0000) geographic position, of the following corners was determined from GPS static observations processed by the National Geodetic Survey, Online Positioning User Service (OPUS), utilizing Continuous Operating Reference Stations (CORS) AJ6962 SHLD SHELDON REFUGE CORS ARP, DK6484 MODB MODOC PLATEAU CORS ARP, DN7467 P731 LILJUNIPER2007 CORS ARP, and carried forward by RTK observations:

The 1/4 section corner of section 34, T. 43 N., R. 26 E., on the S. bdy. of the Tp., is as follows:

Latitude: 41°35'46.625" N. Longitude: 118°59'55.907 W.

The corner of sections 3 and 4, T. 42 N., R. 26 E., on the N. bdy. of the Tp., is as follows:

Latitude: 41°35'46.627" N. Longitude: 119°00'27.294 W.

UNITED STATES DEPARTMENT OF THE INTERIOR  
BUREAU OF LAND MANAGEMENT

Reno, Nevada May 3, 2018

The survey represented by this plat, having been correctly executed in accordance with the requirements of law and the regulations of this Bureau, is hereby accepted.

For the Director

Chief Cadastral Surveyor for Nevada

We Bradley F. Dillon, Cadastral Surveyor, and Mark G. Petrosine, Surveying Technician, HEREBY CERTIFY upon honor that, in pursuance of Special Instructions bearing the date of the 12th day of July, 2017, we have correctively dependently resurveyed a portion of the south boundary, Township 43 North, Range 26 East, Mount Diablo Meridian, in the State of Nevada, which is represented on this plat as having been executed by us and under our direction; and that said survey has been made in strict conformity with said special instructions, the Manual of Surveying Instructions for the Survey of the Public Lands of the United States, and in the specific manner described on this plat.

MAY 02 2018

Date

Cadastral Surveyor

MAY 02 2018

Date

Surveying Technician

(A) The cor. of secs. 33 and 34 only, monumented with an iron post, 2 ins. diam., firmly set, in a mound of stone, 3 1/2 ft. diam., 1 ft. high, with brass cap mkd. as described in the field notes of the dependent resurvey of the S. bdy. of T. 43 N., R. 26 E., executed under Group No. 52, with a mound of stone, 3 ft. base, 1 ft. high, W. of cor.

(B) The cor. of secs. 3 and 4, T. 42 N., R. 26 E., monumented with a stainless steel post, 2 1/2 ins. diam., firmly set, flush with the top of a mound of stone, 3 1/2 ft. diam., 1/2 ft. high, with brass cap mkd. as described in the field notes of the dependent resurvey of a portion of the S. bdy., T. 43 N., R. 26 E., executed under Group No. 936.

(C) The point for the 80 1/16 sec. cor. of sec. 3, T. 42 N., R. 26 E., determined at proportionate dist. bet. the cor. of secs. 3 and 4, T. 42 N., R. 26 E., and the 1/4 sec. cor. of sec. 34, T. 43 N., R. 26 E.

From this point, the 80 1/16 sec. cor., determined by J.J. Johnson in 2014, monumented with a stainless steel post, 2 1/2 ins. diam., firmly set, flush with the top of a mound of stone, 3 ft. diam., 1 ft. high, with brass cap mkd. as described in the field notes of the dependent resurvey of a portion of the S. bdy., T. 43 N., R. 26 E., executed under Group No. 936, bears S. 89°59'50" E., 0.012 chs. dist. Remove the monument as this position was erroneously determined and no longer functions as the 80 1/16 sec. cor.

At the corner point, reset the 2014 stainless steel post over the plastic-encased magnet, 16 ins. in the ground, rebuild mound of stone around stainless steel post, 3 ft. base, to top, add the mks. 2017 to the brass cap and abolish any evidence of the 2014 position.

(D) The W 1/16 sec. cor. of sec. 34 only, monumented with a stainless steel post, 2 1/2 ins. diam., firmly set, projecting 2 ins. above the ground, with brass cap mkd. as described in the field notes of the dependent resurvey of a portion of the S. bdy. T. 43 N., R. 26 E., executed under Group No. 936.

Cor. is located 32 lks. S. of a barbed wire fence, bears E. and W.

From this cor., a position determined by John H. Milton, monumented with a rebar, 5/8 ins. diam., firmly set, projecting 5 ins. above the ground, as recorded in the office of the Recorder, Humboldt County, Nevada, Document No. 2001 587, bears N. 1° E., 0.015 chs. dist. This rebar was not utilized during the dependent resurvey of a portion of the S. bdy., T. 43 N., R. 26 E., executed under Group No. 936 and is not utilized in the course of this survey.

From this same cor., an unmarked rebar, 1/2 in. diam., firmly set, projecting 5 ins. above the ground, with no record found, bears N. 64°38' W., 0.029 chs. dist. This rebar was not utilized during the dependent resurvey of a portion of the S. bdy., T. 43 N., R. 26 E., executed under Group No. 936 and is not utilized in the course of this survey.

(E) The 1/4 sec. cor. of sec. 34 only, monumented with an iron post, 1 in. diam., firmly set, flush with the top of a mound of stone, 5 ft. diam., 1 ft. high, with brass cap mkd. as described in the field notes of the dependent resurvey of a portion of the S. bdy., T. 43 N., R. 26 E., executed under Group No. 936.

Cor. is located in barbed wire fence line, bears E. and W.