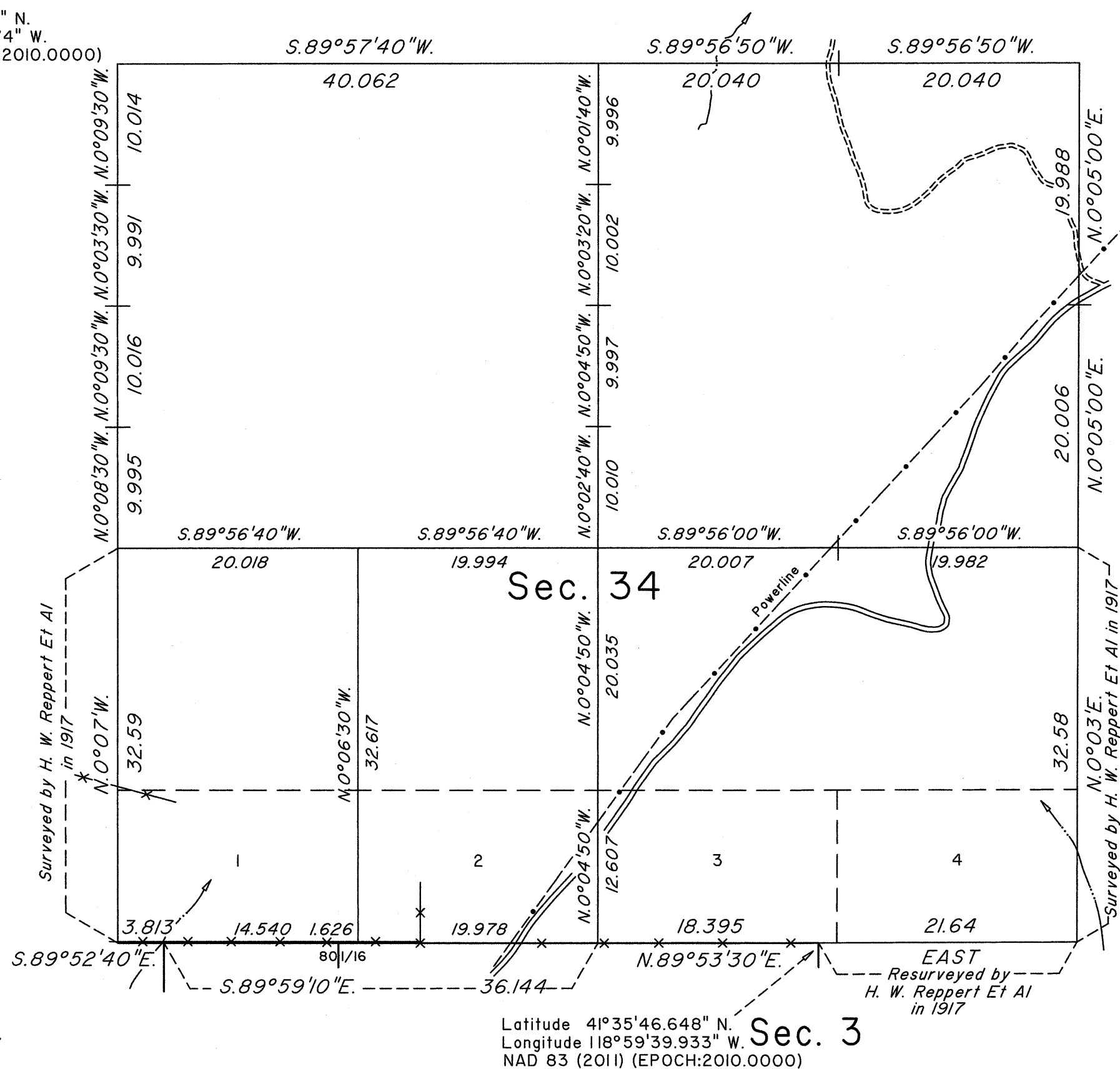
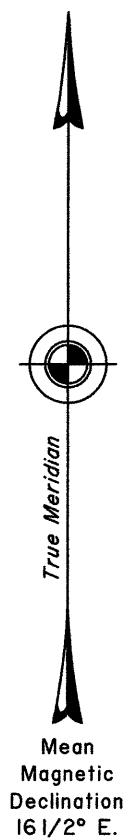


# TOWNSHIP 43 NORTH, RANGE 26 EAST, OF THE MOUNT DIABLO MERIDIAN, NEVADA

## DEPENDENT RESURVEY AND SUBDIVISION

### Sec. 27

Latitude 41°36'33.963" N.  
Longitude 119°00'30.774" W.  
NAD 83 (2011) (EPOCH:2010.0000)



A history of surveys is contained in the field notes.

This plat represents the dependent resurvey of a portion of the south boundary and a portion of the subdivisional lines designed to restore the corners in their true original locations according to the best available evidence and the subdivision of section 34, Township 43 North, Range 26 East, Mount Diablo Meridian, Nevada.

The lottings and areas are as shown on the plat approved March 11, 1919.

Survey executed by Joseph J. Johnson, Cadastral Surveyor, beginning September 9, 2014 and completed August 26, 2016 pursuant to Special Instructions dated August 19, 2014, for Group No. 936, Nevada.

UNITED STATES DEPARTMENT OF THE INTERIOR  
BUREAU OF LAND MANAGEMENT

Reno, Nevada September 28, 2016

This plat is strictly conformable to the approved field notes, and the survey, having been correctly executed in accordance with the requirements of law and the regulations of this Bureau, is hereby accepted.

For the Director

Chief Cadastral Surveyor for Nevada

