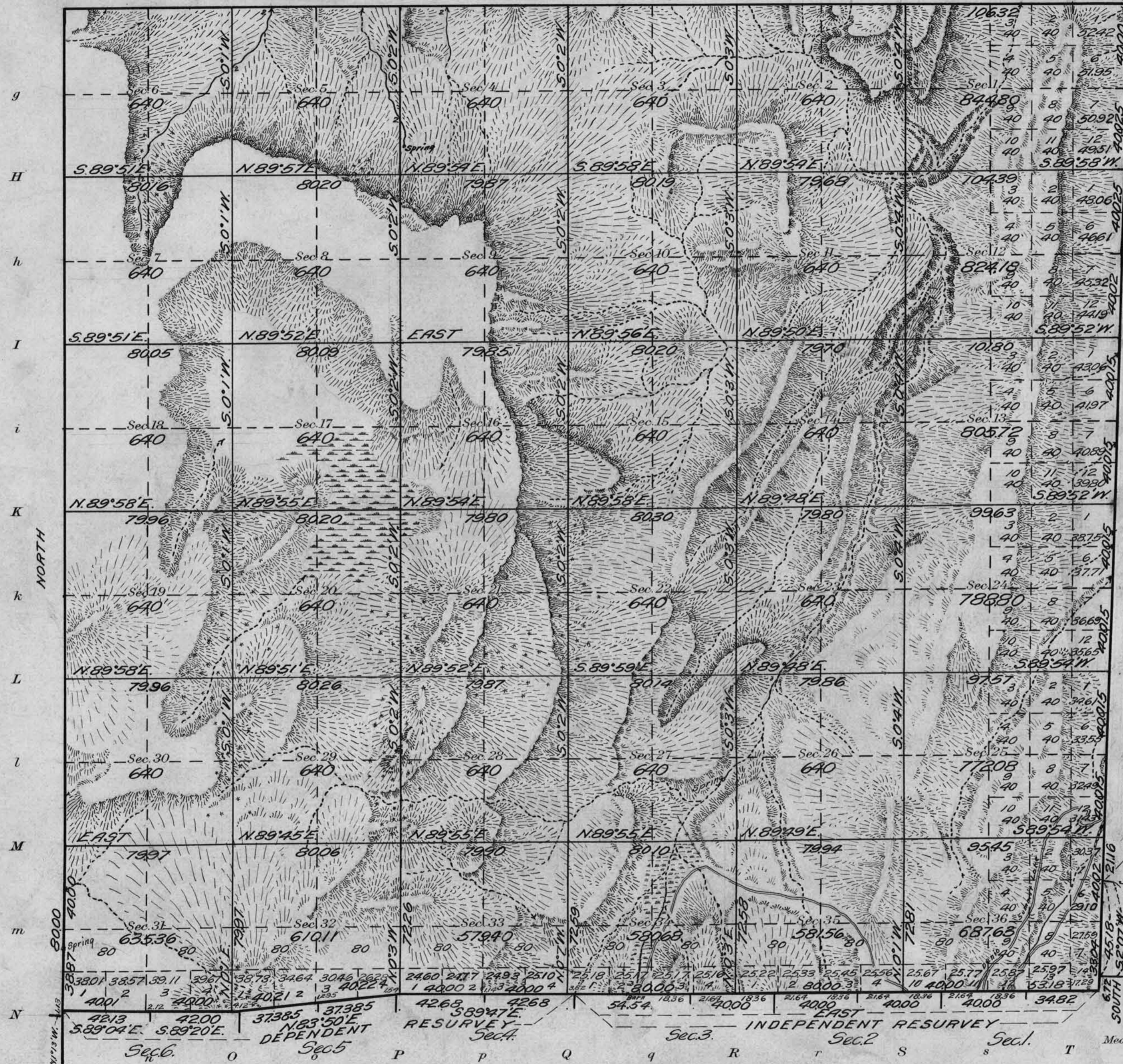


Survey accepted February 17, 1920, G.L.O.

Township N° 43 North Range N° 26 East Mt Diablo Meridian, Nevada

G f F e E d C b B a A

EAST



Areas in Acres	
Public Land	23710.32
Indian Reservation	
Indian Allotments	
Mineral Claims	
Water Surface	
Total Area	23710.32

Scale 40 Chains to an inch
 Mean Magnetic Declination 1827' E.
 Latitude 41° 35' N
 Longitude 118° 59' W

Surveys Designated	By Whom Surveyed	Group		Amount of Surveys		When Surveyed		
		No.	Date of Instructions	Mls.	chs.	Ucs.	When Begun	When Completed
North Boundary	H.W. Rappert U.S.S.	52	March 16, 1917	6	26	32	July 2, 1917	July 6, 1917
East Boundary Res. and Heber P.		6		40	69	69	June 26, 1917	July 16, 1917
South Boundary Res.	Purington U.S.T.	6		13	62	62	June 25, 1917	Aug 25, 1917
West Boundary Res.		5		78	87	87	June 6, 1917	July 2, 1917
Subdivision		60		69	06	69	July 5, 1917	July 17, 1917

The above map of Township No. 43 North Range No. 26 East of the Mt Diablo Meridian, Nevada is strictly conformable to the field notes of the survey thereof on file in this office, which have been examined and approved

U. S. Surveyor General's Office.
 Reno, Nevada, March 11, 1919

John B. Sullivan
 Surveyor General.