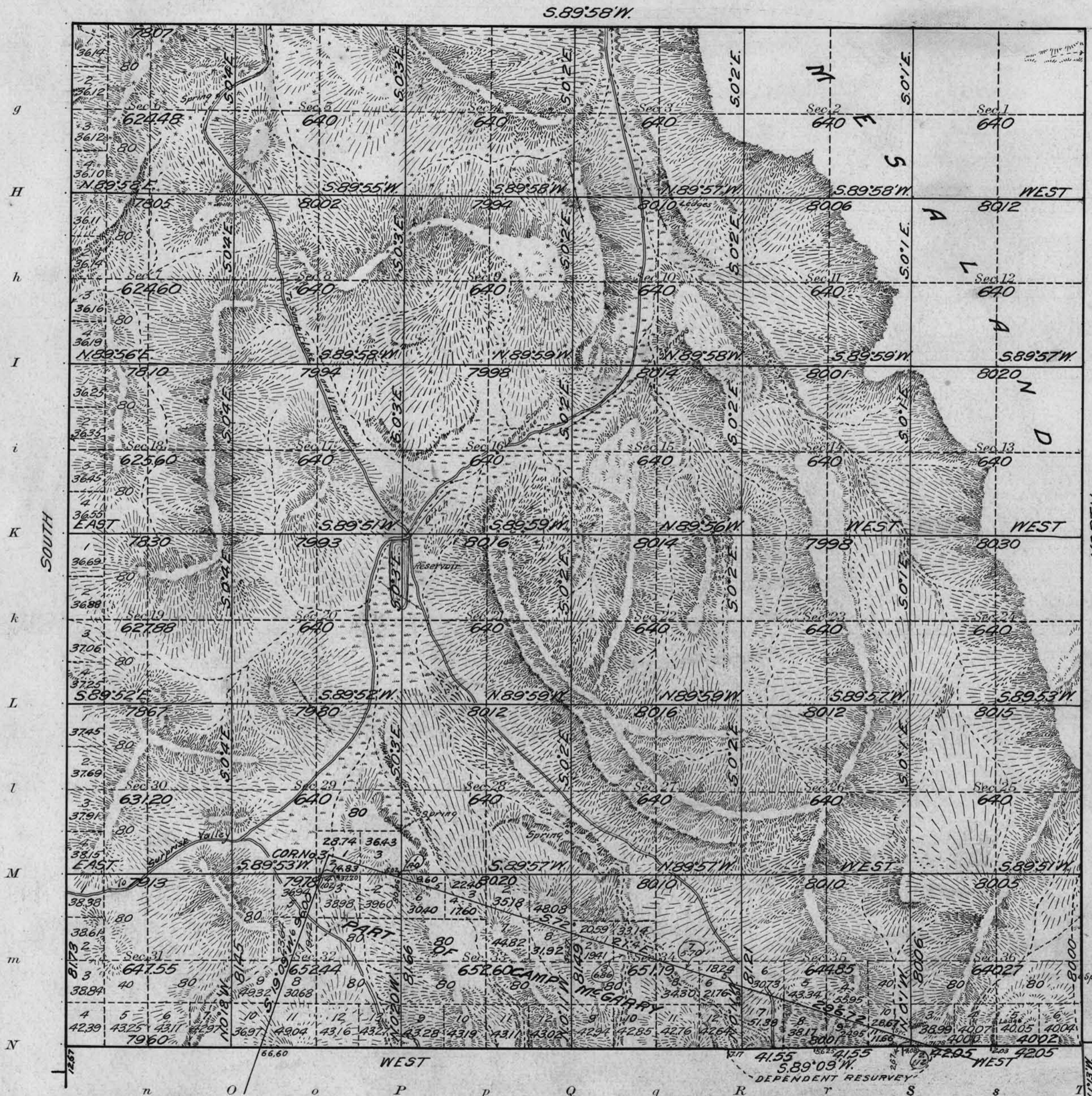


# Township No. 43 North Range No. 25 East M. Diablo Meridian, Nevada

G f F e E d D c C b B a A



Areas in Acres	
Public Land	21,585.54
Indian Reservation	
Indian Allotments	
Mineral Claims	
Water Surface	
Military Reservation	14,37.12
<b>Total Area</b>	<b>23,022.66</b>

Scale 40 Chains to an inch  
Mean Magnetic Declination 18° 38' E

Latitude 41° 35' N  
Longitude 119° 06' W

The above map of Township No. 43 North Range No. 25 East of the M. Diablo Meridian Nevada is strictly conformable to the field notes of the survey thereof on file in this office, which have been examined and approved

U. S. Surveyor General's Office.  
Reno, Nevada, March 11, 1919  
*John B. Sullivan*  
Surveyor General.

Surveys Designated	By Whom Surveyed	Group No.	Date of Instructions	Amount of Surveys			When Surveyed	
				Mts.	chs.	lks.	Begun	Completed
North Boundary	H.W. Rappert	52	March 16, 1917	5	78	07	July 21, 1917	Oct. 21, 1918
East Boundary	U.S. Surveyor		Feb. 11, 1918	6	00	00	June 30, 1917	July 2, 1917
South Boundary Res.	Heber P. Purinton			1	15	42	June 30, 1917	Aug. 11, 1917
South Boundary	U.S. Transitman			4	64	21	June 30, 1917	Oct. 19, 1918
West Boundary	John R. English			6	01	73	Oct. 22, 1918	Oct. 25, 1918
Subdivision	U.S. Transitman			59	79	72	July 23, 1917	Oct. 25, 1918