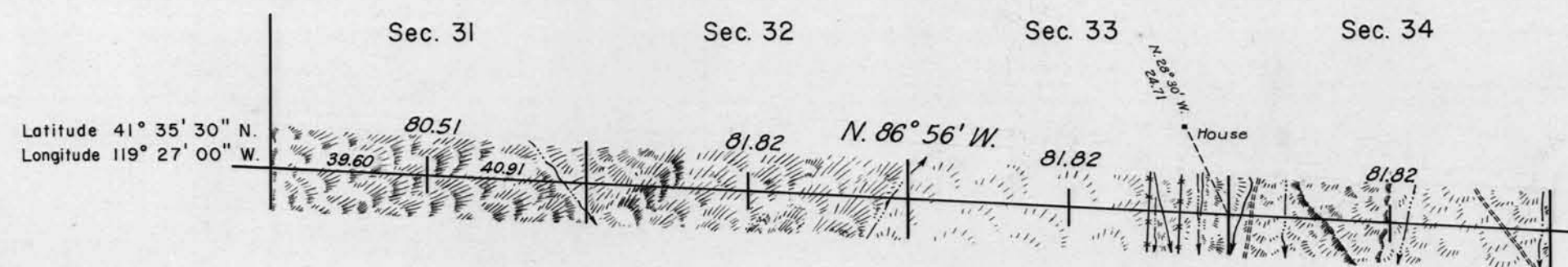


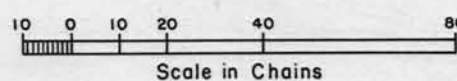
TOWNSHIP 43 NORTH, RANGE 23 EAST, OF THE MOUNT DIABLO MERIDIAN, NEVADA.
DEPENDENT RESURVEY, PORTION OF SOUTH BOUNDARY.



This plat represents a dependent resurvey of a portion of the south boundary designed to restore all corners in their true original location according to the best available evidence.

The south boundary was surveyed by G. W. Garside and C. L. Preble in 1875.

The dependent resurvey of the west four miles of the south boundary was executed by Philip L. Inch, October 7 to 9, 1941, under special instructions dated August 1, 1940 for Group 310, Nevada.



UNITED STATES DEPARTMENT OF THE INTERIOR
BUREAU OF LAND MANAGEMENT
Washington, D.C. August 29, 1955

This plat is strictly conformable to the approved field notes, and the survey, having been correctly executed in accordance with the requirements of law and the regulations of this Bureau, is hereby accepted.

For the Director

Earl S. Harrington

Cadastral Engineering Staff Officer