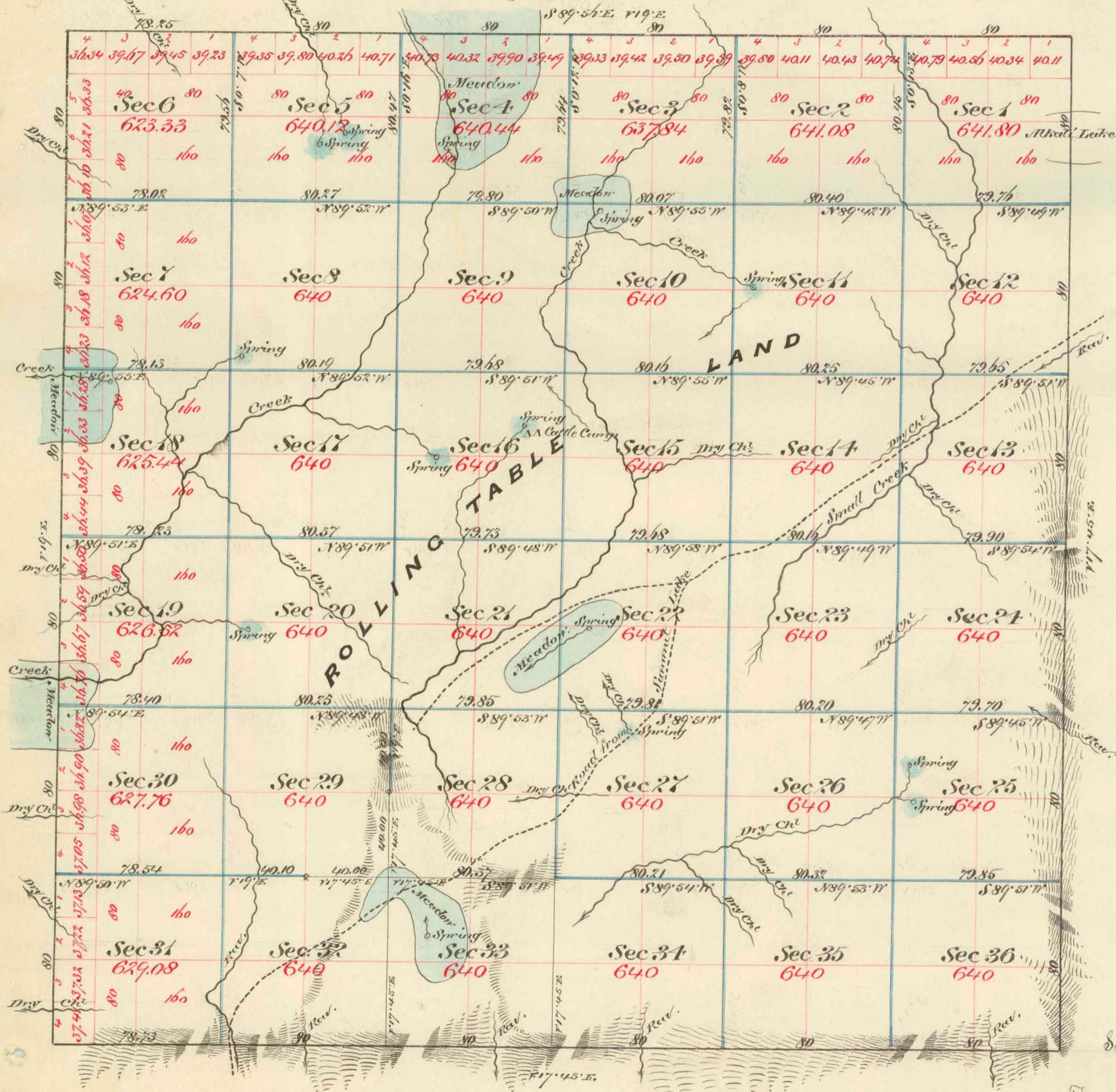


Township N<sup>o</sup> 43 North

Range N<sup>o</sup> 22 East

Mount Diablo Meridian



Aggregate area of Public Land surveyed under contract David & Beale Nov. 18<sup>th</sup> 1873  
 S. W. Gause " " 1876  
 Aggregate

1,400.00 A.
21,358.01 "
<u>22,958.01 "</u>

Commenced April 21<sup>st</sup> 1877  
 Completed " 26<sup>th</sup> "

Subdivisions not otherwise noted run with a Variation of 19° East

Surveys designated	By whom surveyed	Date of contract	Amt of Survey	When surveyed	N <sup>o</sup> Con.
East & South boundary Subdivisions	David & Beale	Nov. 18 <sup>th</sup> 1873	11 - 28 - 73	1874	61
North & West " Subdivisions (blue)	S. W. Gause	" " 1876	4 - 00 - 32	January "	"
	"	"	11 - 28 - 25	1877	74
	"	"	55 - 21 - 62	April "	"

The above Map of Township N 43 North Range N 22 East Mount Diablo Meridian is strictly conformable to the field notes of the surveys those of on file in this office which have been examined and approved  
 U. S. Surveyor General's Office  
 Virginia City Nevada  
 June 20<sup>th</sup> 1877

0334

T43N, R22E

*S. W. Gause*  
 U. S. Surveyor Genl Nov.