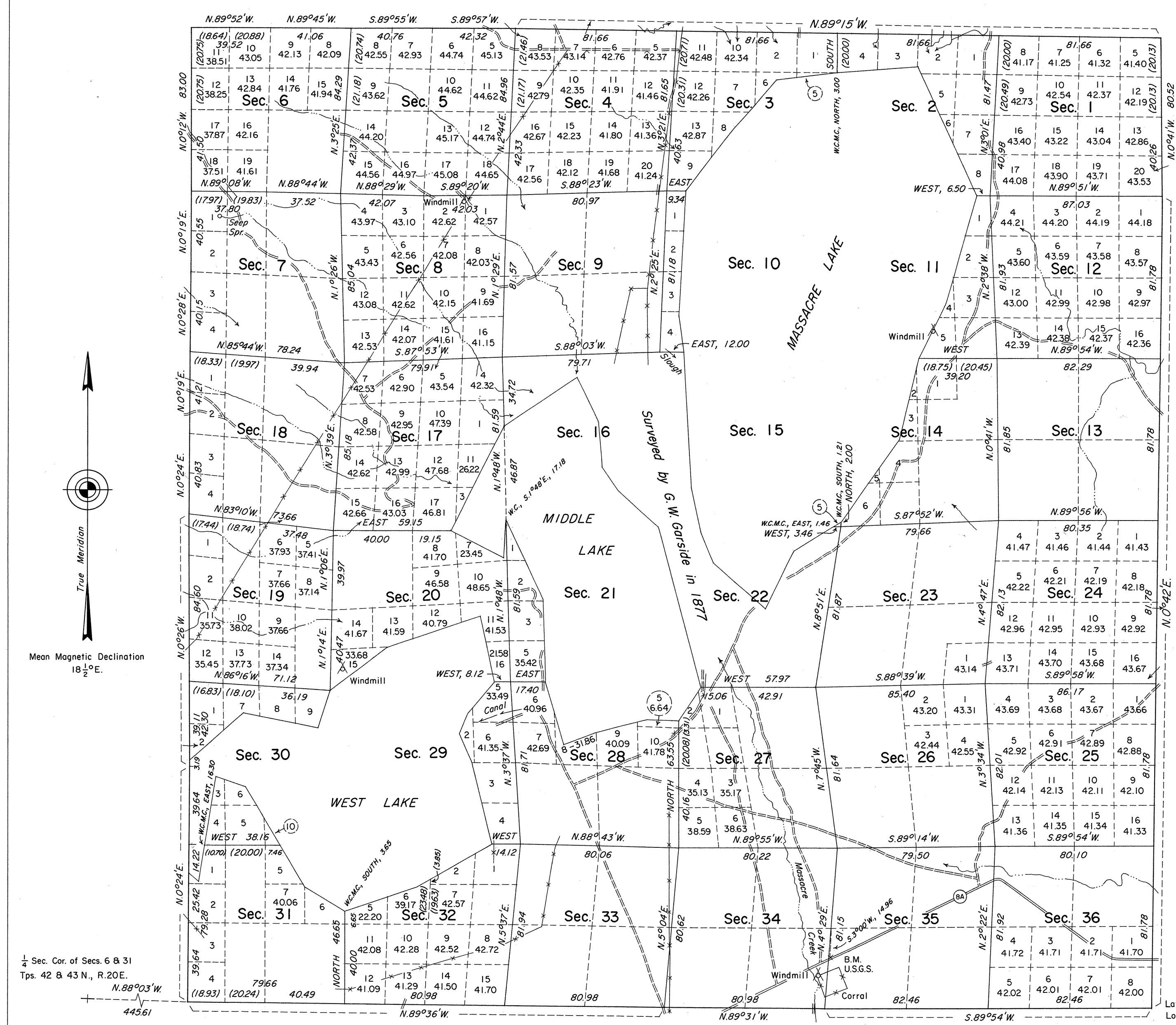


TOWNSHIP 43 NORTH, RANGE 21 EAST, OF THE MOUNT DIABLO MERIDIAN, NEVADA

DEPENDENT RESURVEY

OFFICIALLY FILED
NEVADA STATE OFFICE
10:00 AM 10/5/1972



History of the earlier surveys is contained in the field notes.

A dependent resurvey of the south boundary was executed concurrently under T. 42 N., R. 21 E., of this group.

This plat represents a dependent resurvey of the east, west and north boundaries and a portion of the subdivisional lines of T. 43 N., R. 21 E., designed to restore the corners in their original locations according to the best available evidence.

Except as indicated, lottings and areas are as shown on the plat approved June 20, 1877.

Survey executed by John D. Sorensen, Cadastral Surveyor, June 13, 1968 to June 24, 1970, under Special Instructions dated April 29, 1968, for Group No. 459, Nevada.

UNITED STATES DEPARTMENT OF THE INTERIOR
BUREAU OF LAND MANAGEMENT
Washington, D.C. August 28, 1972

This plat is strictly conformable to the approved field notes, and the survey, having been correctly executed in accordance with the requirements of law and the regulations of this Bureau, is hereby accepted.

For the Director
Clark I. Lumm

Chief, Division of Cadastral Survey