

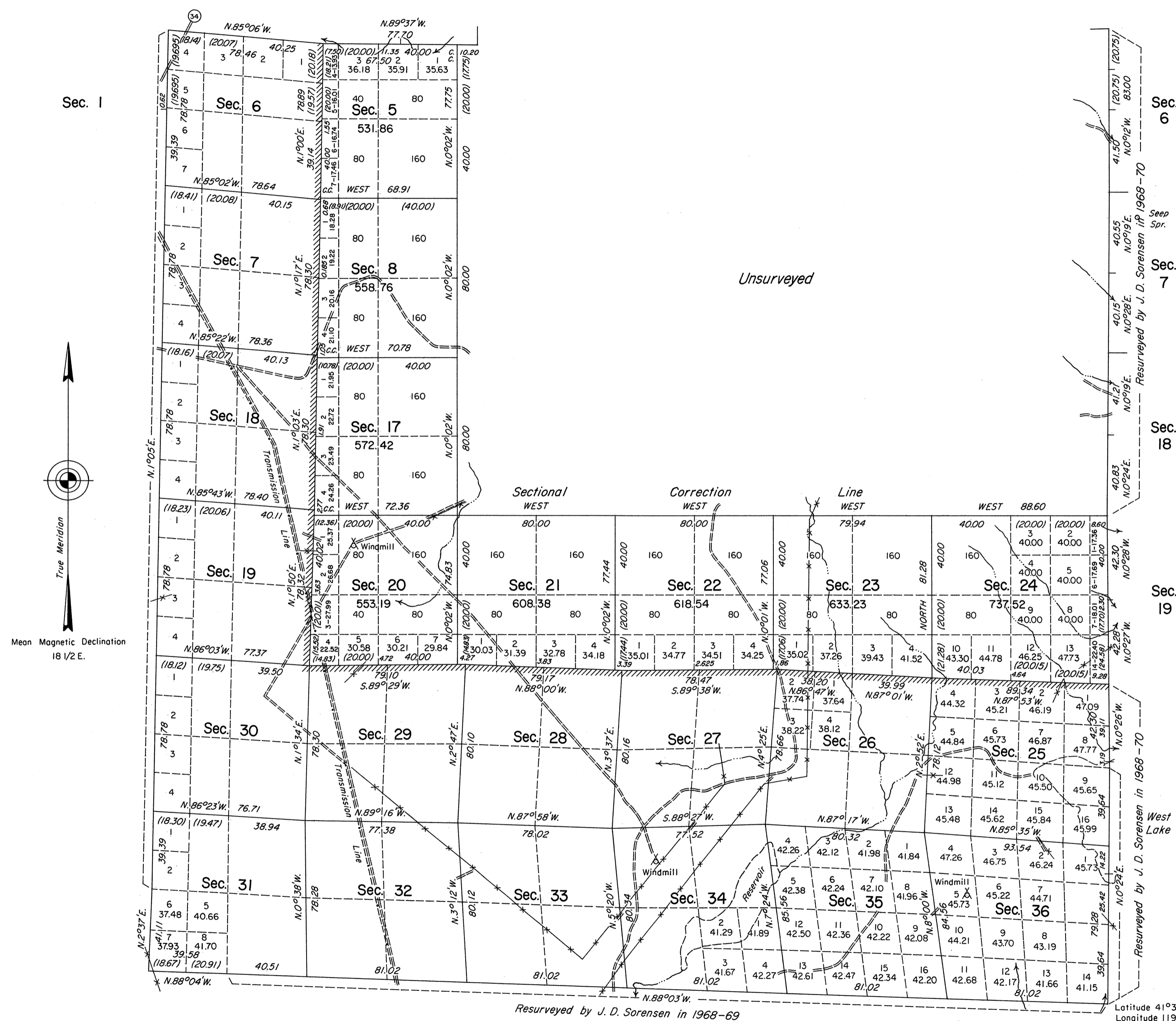
ORIGINAL

TOWNSHIP 43 NORTH, RANGE 20 EAST, OF THE MOUNT DIABLO MERIDIAN, NEVADA

DEPENDENT RESURVEY AND SURVEY

Sec. 32

Sec. 1



True Meridian

Mean Magnetic Declination
18 1/2 E.

Resurveyed by J. D. Sorensen in 1968-69

Scale in Chains

Area Surveyed 4813.90 Acres

Sec. 6

Sec. 7

Sec. 18

Sec. 19

Sec. 25

Sec. 36

History of the earlier surveys is contained in the field notes.

This plat represents a dependent resurvey of a portion of the south boundary of T. 44 N., R. 20 E., a portion of the west boundary of T. 43 N., R. 21 E., and the west boundary and a portion of the subdivisional lines of T. 43 N., R. 20 E., designed to restore the corners in their true original locations according to the best available evidence; and the survey of a portion of the subdivisional lines of T. 43 N., R. 20 E., Mount Diablo Meridian, Nevada.

Lottings and areas, except as shown hereon, are as shown on the plat approved July 2, 1879.

Survey executed by James A. Mack, Cadastral Surveyor, beginning August 20, 1985 and completed October 14, 1986, under Special Instructions dated June 13, 1985, Supplemental Special Instructions dated September 23, 1985, and Supplemental Special Instructions dated October 2, 1986, for Group No. 622, Nevada.

UNITED STATES DEPARTMENT OF THE INTERIOR
BUREAU OF LAND MANAGEMENT

Reno, Nevada

July 21, 1987

This plat is strictly conformable to the approved field notes, and the survey, having been correctly executed in accordance with the requirements of law and the regulations of this Bureau, is hereby accepted.

For the Director
Lacel E. Bland

Chief Cadastral Surveyor

Latitude 41°35'44.9"N.
Longitude 119°40'30.2"W.

OK
2/24/88