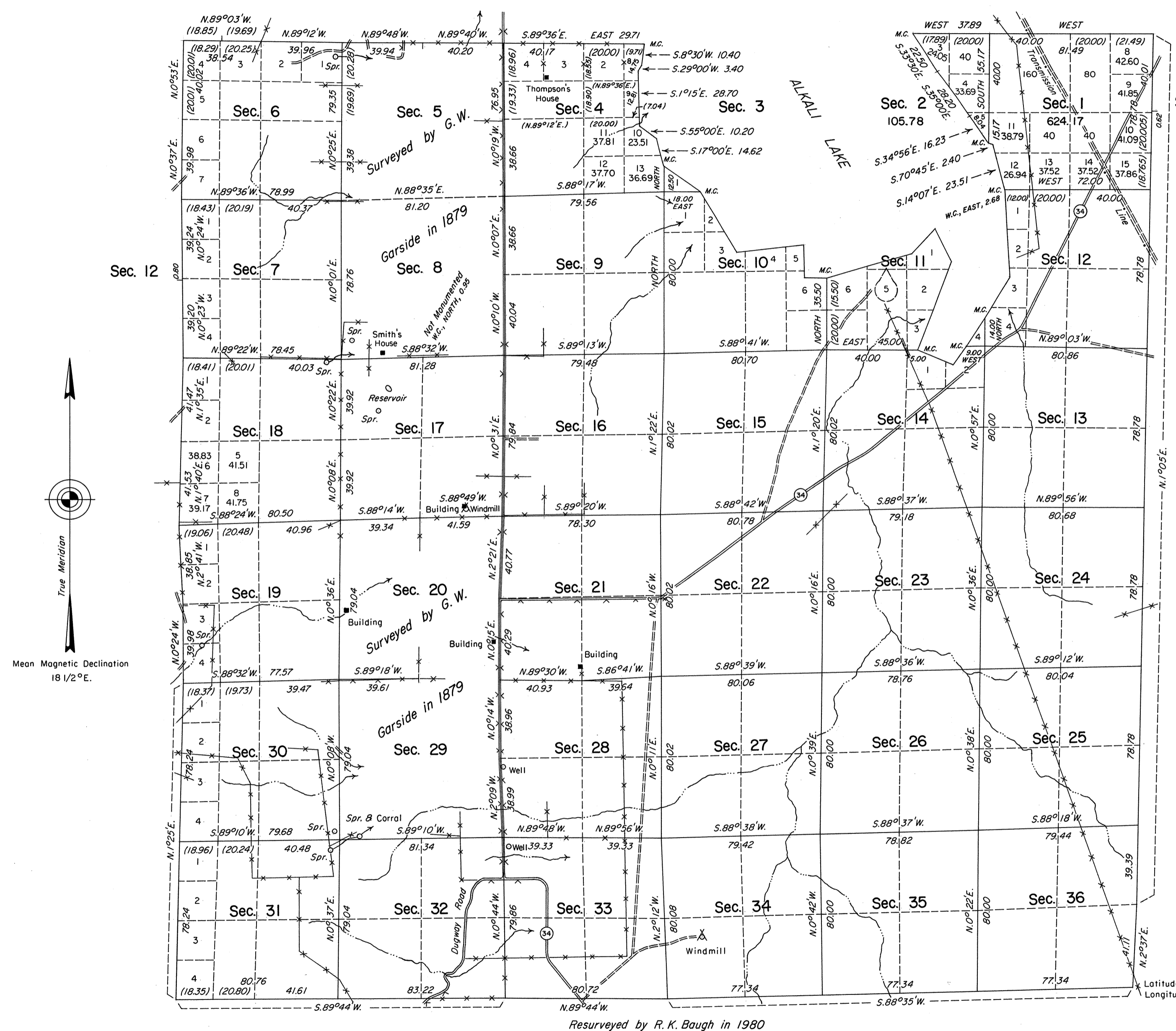


ORIGINAL

# TOWNSHIP 43 NORTH, RANGE 19 EAST, OF THE MOUNT DIABLO MERIDIAN, NEVADA

## DEPENDENT AND INDEPENDENT RESURVEYS AND SURVEY



True Meridian  
Mean Magnetic Declination  
18 1/2° E.

History of the earlier surveys is contained in the field notes.

A dependent resurvey of the east boundary and a portion of the north boundary and a survey of a portion of the north boundary were executed concurrently under T. 43 N., R. 20 E., and T. 44 N., R. 19 E., of this same Group.

This plat represents a dependent resurvey of the west boundary and a portion of the subdivisional lines of T. 43 N., R. 19 E., designed to restore the corners in their true original locations according to the best available evidence and an independent resurvey and survey of a portion of the subdivisional lines and meander lines of Alkali Lake superseding a portion of the plat approved July 2, 1879.

Lottings and areas, except as shown hereon, are as shown on the plat approved July 2, 1879.

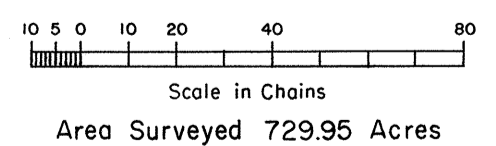
Survey executed by James A. Mack, Cadastral Surveyor, beginning June 14, 1985 and completed October 14, 1986, under Special Instructions dated June 13, 1985, Supplemental Special Instructions dated September 23, 1985, and Supplemental Special Instructions dated October 2, 1986, for Group No. 622, Nevada.

UNITED STATES DEPARTMENT OF THE INTERIOR  
BUREAU OF LAND MANAGEMENT

Reno, Nevada July 21, 1987

This plat is strictly conformable to the approved field notes, and the survey, having been correctly executed in accordance with the requirements of law and the regulations of this Bureau, is hereby accepted.

For the Director  
*Lacel E. Bland*  
Chief Cadastral Surveyor



Area Surveyed 729.95 Acres

Latitude 41°35'55.6"N,  
Longitude 119°47'31.3"W

CK  
11/5/87