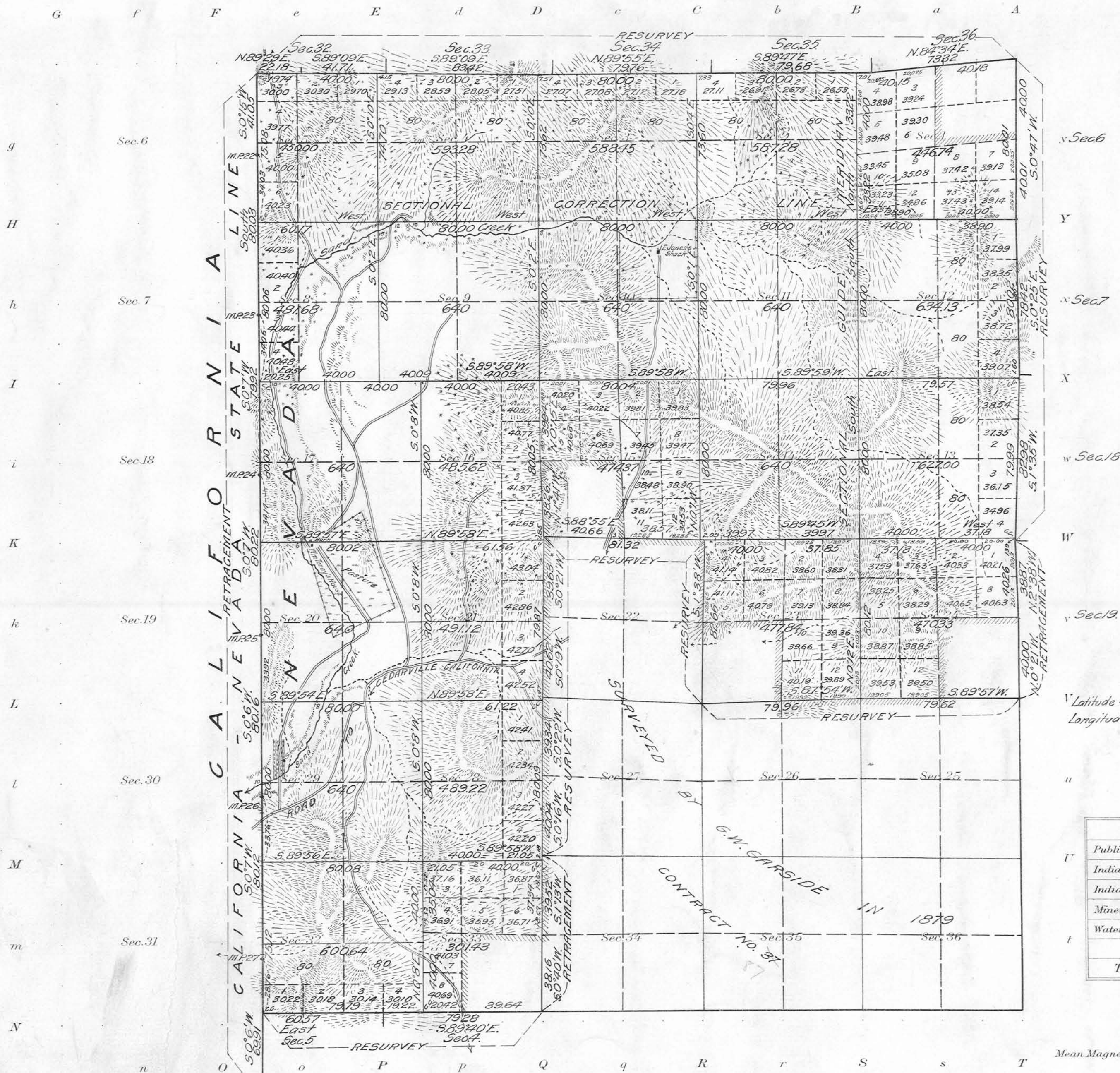


Township N<sup>o</sup> 43 North Range N<sup>o</sup> 18 East M<sup>t</sup> Diablo Meridian, Nevada



Areas in Acres	
Public Land	12679.13
Indian Reservation	
Indian Allotments	
Mineral Claims	
Water Surface	
<b>Total Area</b>	<b>12679.13</b>

Scale 40 Chains to an inch  
Mean Magnetic Declination

Surveys Designated	By Whom Surveyed	Group		Amount of Surveys			When Surveyed	
		No.	Date	Mls.	chs.	lks.	Begun	Completed
Cal-New State Line Retr.	Walter E. Hoffman	5	June 18, 1913	6	31	41	June 23, 1914	July 1, 1914
N. End 5. Bays Resur.	"	9	"	4	41	33	Nov. 12, 1913	June 18, 1914
E. Boundary Retr.	"	0	"	0	78	87	Nov. 12, 1913	Nov. 12, 1913
Subdivision Retr.	"	0	"	0	77	78	June 2, 1914	June 2, 1914
Subdivision Resur.	"	6	"	6	41	45	Nov. 13, 1913	June 22, 1914
Subdivision	"	31	"	31	69	27	May 28, 1914	July 3, 1914

The above map of Township No. 43 North Range No. 18 East of the Mt. Diablo Meridian Nevada is strictly conformable to the field notes of the survey thereof on file in this office, which have been examined and approved  
U. S. Surveyor General's Office.  
Reno, Nevada, June 17, 1915  
*John B. O'Sullivan*  
Surveyor General.