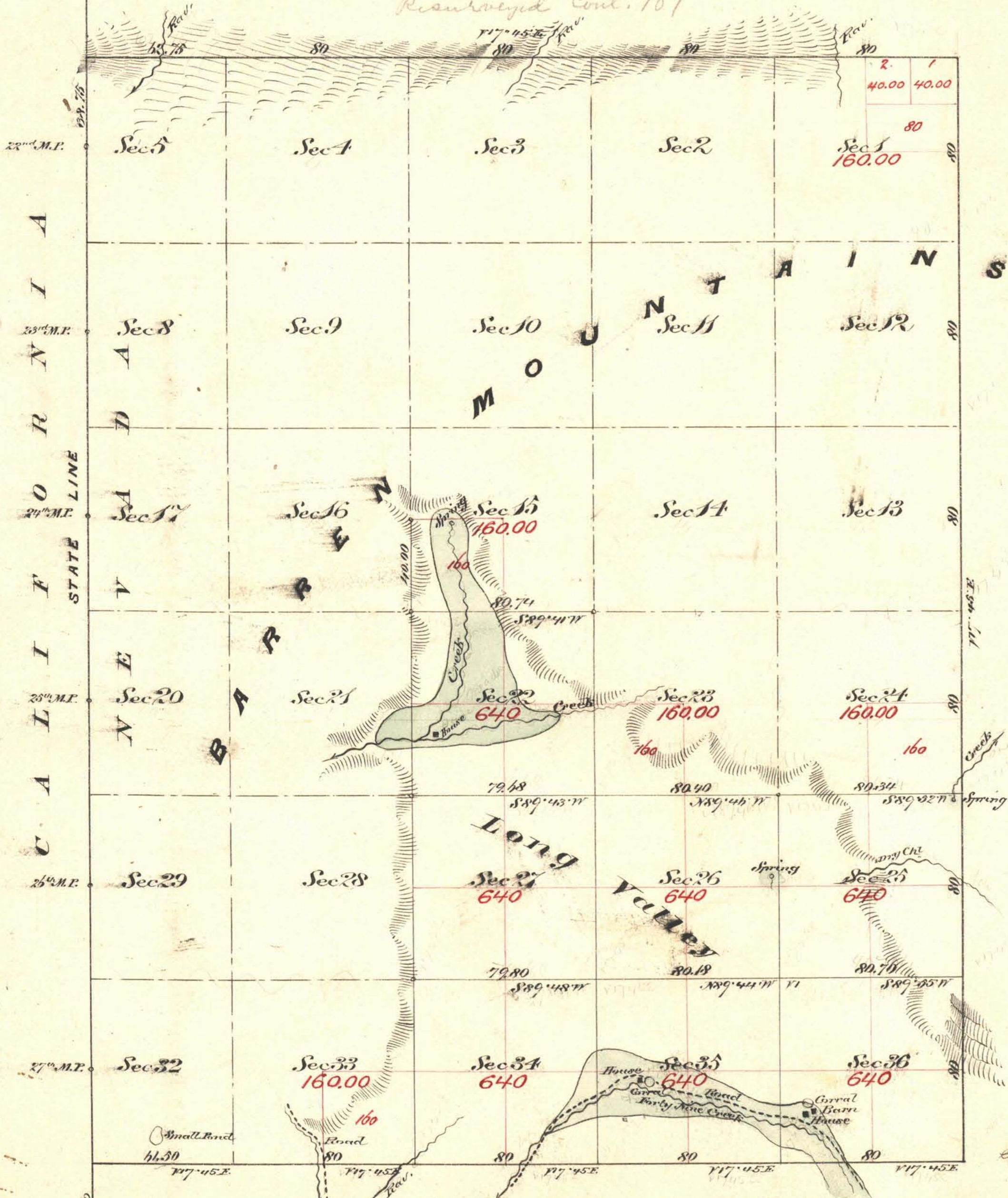


Township N^o 43 North Range N^o 18 East Mount Diablo Meridian

Resurveyed Cont. 101



Aggregate Area of Public Land Surveyed
Estimated " " Bureau Mountains Resurveyed
Aggregate

5280.00 Ac.
13,921.76 "
<u>18,301.76 "</u>

Commenced May 13th 1879
Completed " 14th "

Surveys designated	By whom Surveyed	Date of Contract	Acres Surveyed	When Surveyed
W. boundary (State Line)	A. W. Von Schmidt	July 20 th 1872		1872
N. S. & E. "	G. W. Geowide	Mar. 25 th 1879	15- 44- 25	1879
Subdivisions	"	"	15- 41- 84	"
Connection on S. Line	"	"	79- 25	"

The above plat of Township N^o 43 North of Range N^o 18 East Mount Diablo Meridian is strictly conformable to the field notes of the survey thereof on file in this office which have been examined and approved
U.S. Survey Gen'l. Office
Virginia City Nev.
July 2nd 1879

G. J. Davis
U.S. Survey Gen'l. Nev.

0075

VD T 43 N, R 18 E.