

## TOWNSHIP 42 NORTH, RANGE 62 EAST, OF THE MOUNT DIABLO MERIDIAN, NEVADA

Sec. 7

DEPENDENT RESURVEY

## CORNER DESCRIPTIONS

- (A) The cor. of secs. 7, 8, 17 and 18, perpetuated by person(s) unknown, monumented with a rebar, of which no record was found, 5/8 in. diam., 14 ins. long, firmly set in a collar of stone, with attached aluminum tag mkd. SUMMIT ENGINEERING 10/18/04, with a gray basalt stone, 14x9x7 ins., no mks. visible, lying loose alongside, and a steel fence post alongside. This position correlates well with other existing corners, calls of record, and the official record of Mineral Survey Nos. 4864 and 4865, and is accepted as a careful and faithful perpetuation of the original corner.

At the corner point

Set a stainless steel post, 28 ins. long, 2 1/2 ins. diam., 21 ins. in the ground, over a plastic-encased magnet, and in a collar of stone, with brass cap mkd.

T42N R62E  
S 71° S 8  
S18° S17

2017

Bury rebar and gray basalt stone and reset steel fence post alongside.

Corner is located on E. side of road cut, 15 lks. wide, bears SSE. and NNW.; 2 chs. S. of creek, 10 lks. wide, 1/2 ft. deep, drains SSE.; 1 ch. W. of same creek, drains SSE.; and 40.50 chs. W. of the record call to a draw, drains S. 10° W.

- (B) The 1/4 sec. cor. of secs. 7 and 8, monumented with a chiseled X above the mks. 1/4, mkd. on rock in place, 10x9x3 ft. high, with a mound of stone, 3 ft. diam., 2 ft. high W. of X. (Record: mkd. 1/4 to W. of X)

Corner is located 1.15 chs. N. of a barbed wire fence running SE. and NW. along top of steep descent to the S.

CORNER NOT REMONUMENTED

- (C) Cor. No. 1, Mineral Survey No. 4865, Jungle No. 3 lode, identical with Cor. No. 1, Mineral Survey No. 4865, Jungle No. 4 lode, monumented with an iron post, 2 ins. diam., firmly set, projecting 20 ins. above the ground, with an unmarked copper plate, 2x3 ins. welded to top.

CORNER NOT REMONUMENTED

- (D) The cor. of secs. 8, 9, 16 and 17, determined at the center of a small depression, 6 ins. deep, with a basalt stone, 24x12x10 ins., no mks. visible, tipped on side alongside said small depression, on S. side of a well embedded mound of stone, 3 ft. diam., 1/2 ft. high, with an unmarked rebar 5/8 ins. diam., 16 ins. long, lying loose in mound. (Record: 18x10x7 ins. with a mound of stone, 2 ft. base, W. of cor.)

Reset basalt stone upright in depression on S. side of mound of stone.

CORNER NOT REMONUMENTED

- (E) Point for the E 1/16 sec. cor. of secs. 7 and 18, falls on steep slope of unstable mine tailings where it is impractical to set a permanent monument.

POINT NOT MONUMENTED

This plat in two sheets, represents the entire record of the dependent resurvey of a portion of the subdivisional lines, and Mineral Survey No. 4864, Township 42 North, Range 62 East, Mount Diablo Meridian, Nevada.

The history of prior surveys is as follows:

In 1899, Herbert B. Maxson, U.S. Deputy Surveyor, surveyed the west boundary and subdivisional lines of T. 42 N., R. 62 E., under contract No. 217, as shown on the official plat approved February 21, 1900 and accepted April 9, 1900.

In 1914, Newton E. Potter, U.S. Surveyor, resurveyed the east boundary of T. 42 N., R. 61 E., under Group No. 20, as shown on the official plat approved December 8, 1915.

In 1959, Frank W. Millard, Mineral Surveyor, surveyed Jungle No. 1 and Jungle No. 2 lodes under M.S. No. 4864, as shown on the official plat approved February 29, 1960.

In 1959, Frank W. Millard, Mineral Surveyor, surveyed Jungle No. 3 and Jungle No. 4 lodes under M.S. No. 4865, as shown on the official plat approved March 1, 1960.

Survey executed by Bradley F. Dillon, Cadastral Surveyor, and Mark G. Petrosine, Surveying Technician, beginning June 1, 2017, and completed June 6, 2017, pursuant to Special Instructions dated May 31, 2017, for Group No. 969, and Assignment Instructions dated May 31, 2017.

For those lines not showing bearings and distances, refer to the prior official records.

The rules of proportionate measurement, and parallel side and end lines were applied in order to ascertain the position of lost corners, after completing the necessary retracements to connect with identified corner locations.

Measurements were made with Trimble R-10 Global Positioning System (GPS) receivers using the real-time kinematic method (RTK) and refer to the true meridian based on geodetic methods. The mean bearings of the lines and horizontal equivalents of ground distances only are entered in this record. Topography was measured with both RTK measurements and aerial imagery photo reconciled to ground points.

The NAD 1983 (2011) (EPOCH:2010.0000) geographic position, of the following corners was determined from GPS static observations processed by the National Geodetic Survey, Online Positioning User Service (OPUS), utilizing Continuous Operating Reference Stations (CORS) DL7710 P007 SALMONFALLNV2007 CORS ARP, DL7734 P100 PARKVALLEYUT2007 CORS ARP, DL7737 P113 KNOLLSWESTUT2006 CORS ARP, and carried forward by RTK observations:

The corner of sections 7, 8, 17 and 18 is as follows:  
Lat. 41°32'14.391" N. Long. 114°59'26.759" W.

Corner No. 3, Mineral Survey No. 4864, Jungle No. 1 lode is as follows:  
Lat. 41°32'27.266" N. Long. 114°59'57.682" W.

FIELD ASSISTANT

Justin V. Haddon Cadastral Surveyor

UNITED STATES DEPARTMENT OF THE INTERIOR  
BUREAU OF LAND MANAGEMENT

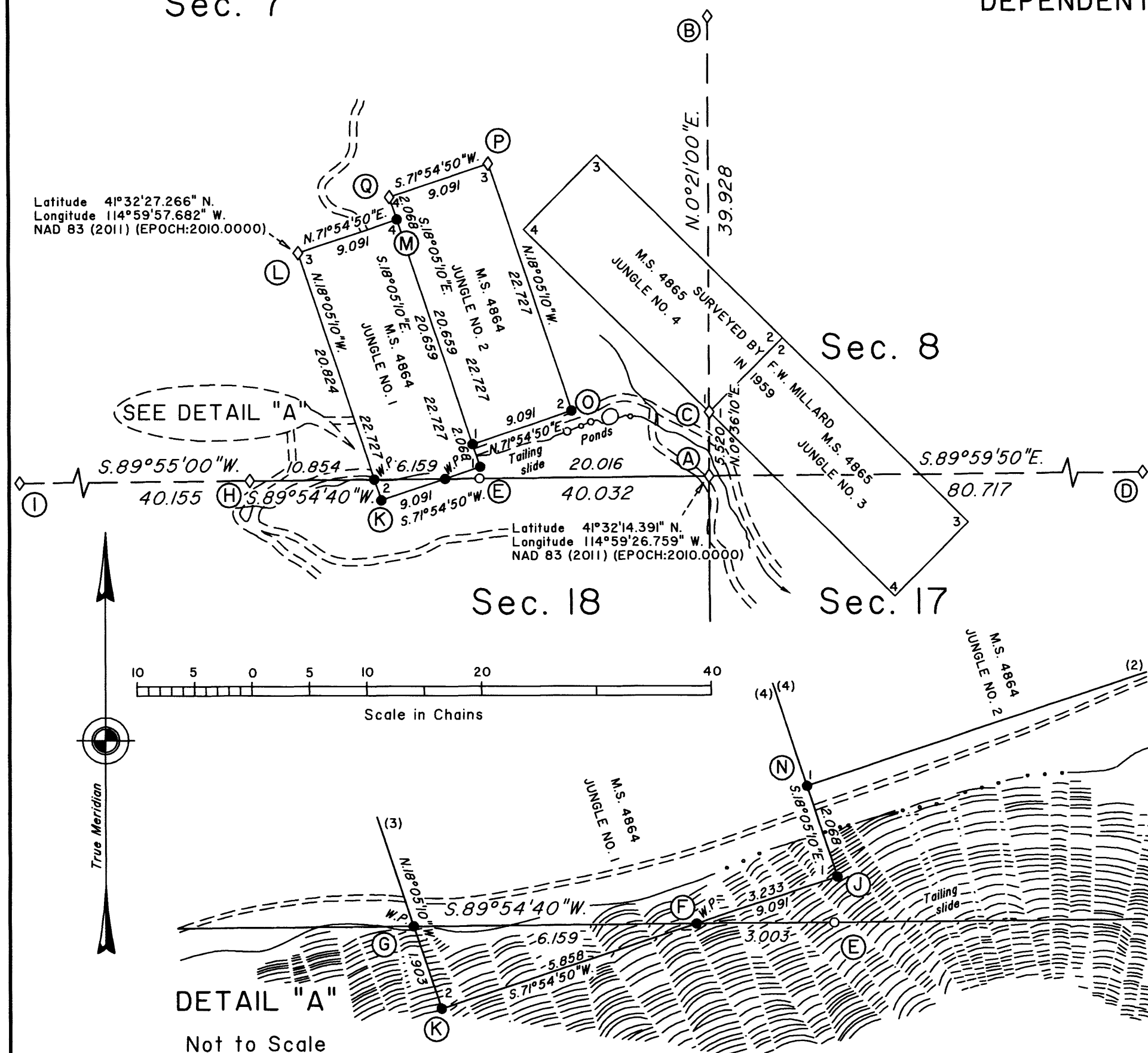
Reno, Nevada May 2, 2018

The survey represented by this plat, having been correctly executed in accordance with the requirements of law and the regulations of this Bureau, is hereby accepted.

For the Director

Malcolm O. Hammery

Chief Cadastral Surveyor for Nevada



We Bradley F. Dillon, Cadastral Surveyor, and Mark G. Petrosine, Surveying Technician, HEREBY CERTIFY upon honor that, in pursuance of Special Instructions bearing the date of the 31st day of May, 2017, we have dependently resurveyed a portion of the subdivisional lines and Mineral Survey No. 4864, Township 42 North, Range 62 East, Mount Diablo Meridian, in the State of Nevada; which are represented on this plat as having been executed by us and under our direction; and that said survey has been made in strict conformity with said special instructions, the Manual of Surveying Instructions for the Survey of the Public Lands of the United States, and in the specific manner described on this plat.

MAY 02 2018

Date

Bradley F. Dillon

Cadastral Surveyor

MAY 02 2018

Date

Mark Petrosine

Surveying Technician