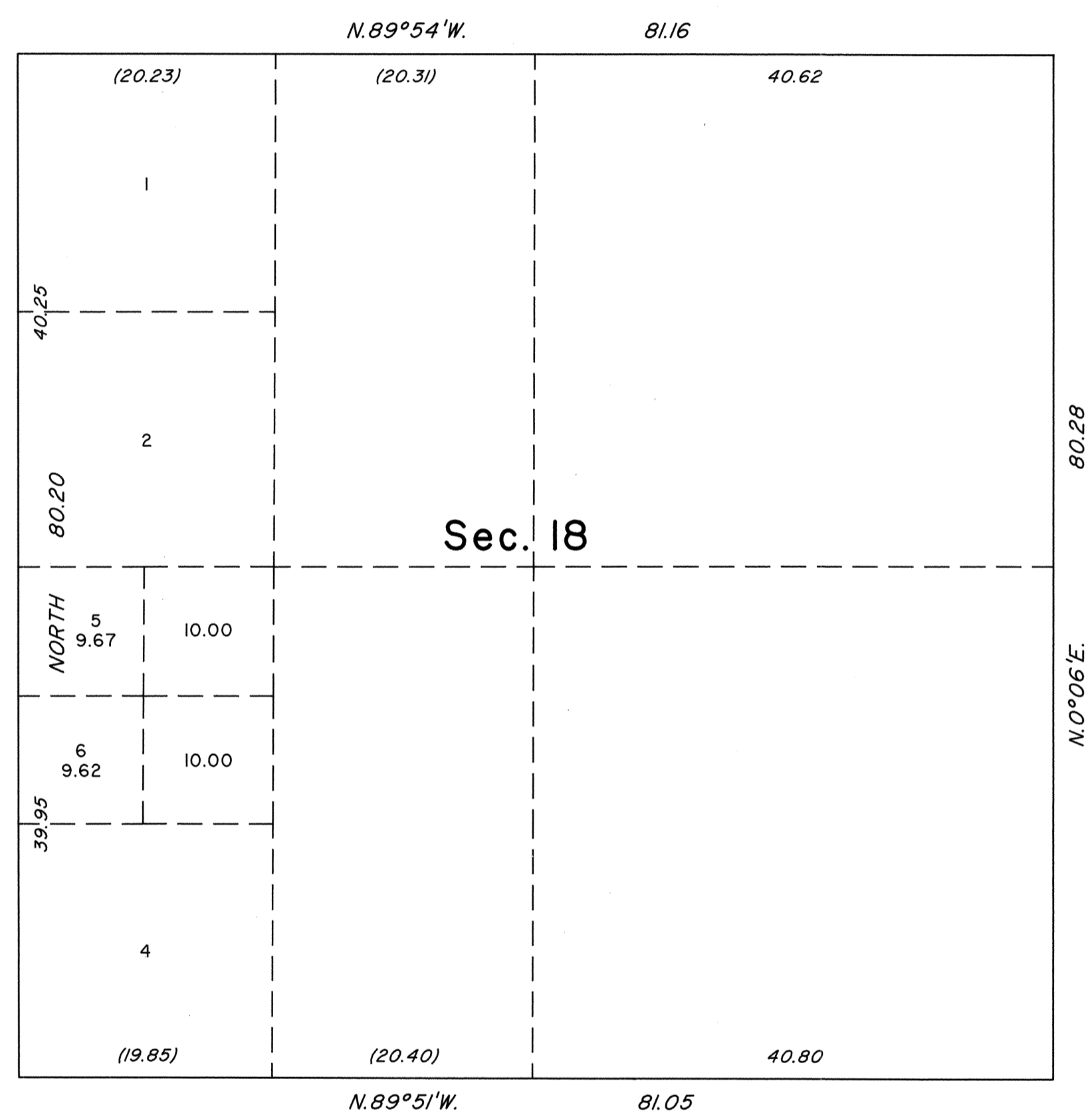


OFFICIALLY FILED
NEVADA STATE OFFICE
at 10:00 AM on September 8, 1994

TOWNSHIP 42 NORTH, RANGE 60 EAST, OF THE MOUNT DIABLO MERIDIAN, NEVADA
SUPPLEMENTAL PLAT OF SECTION 18



This plat, showing a subdivision of original lot 3, sec. 18, T.42N., R.60E., Mount Diablo Meridian, Nevada, is based upon the plat approved April 19, 1881, and the plat accepted March 24, 1989.

UNITED STATES DEPARTMENT OF THE INTERIOR
BUREAU OF LAND MANAGEMENT

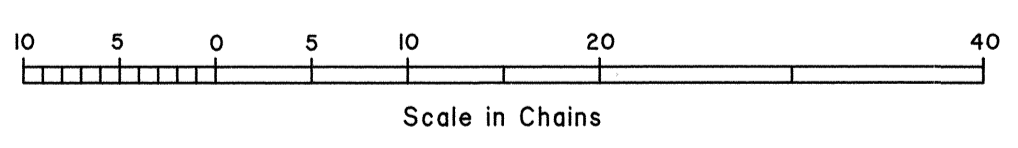
Reno, Nevada August 31, 1994

This plat, showing amended lottings, is based upon the official records, and having been correctly prepared in accordance with the regulations of this Bureau, is hereby accepted.

For the Director

John S. Parrish

Chief Cadastral Surveyor, Nevada



GM

RNT