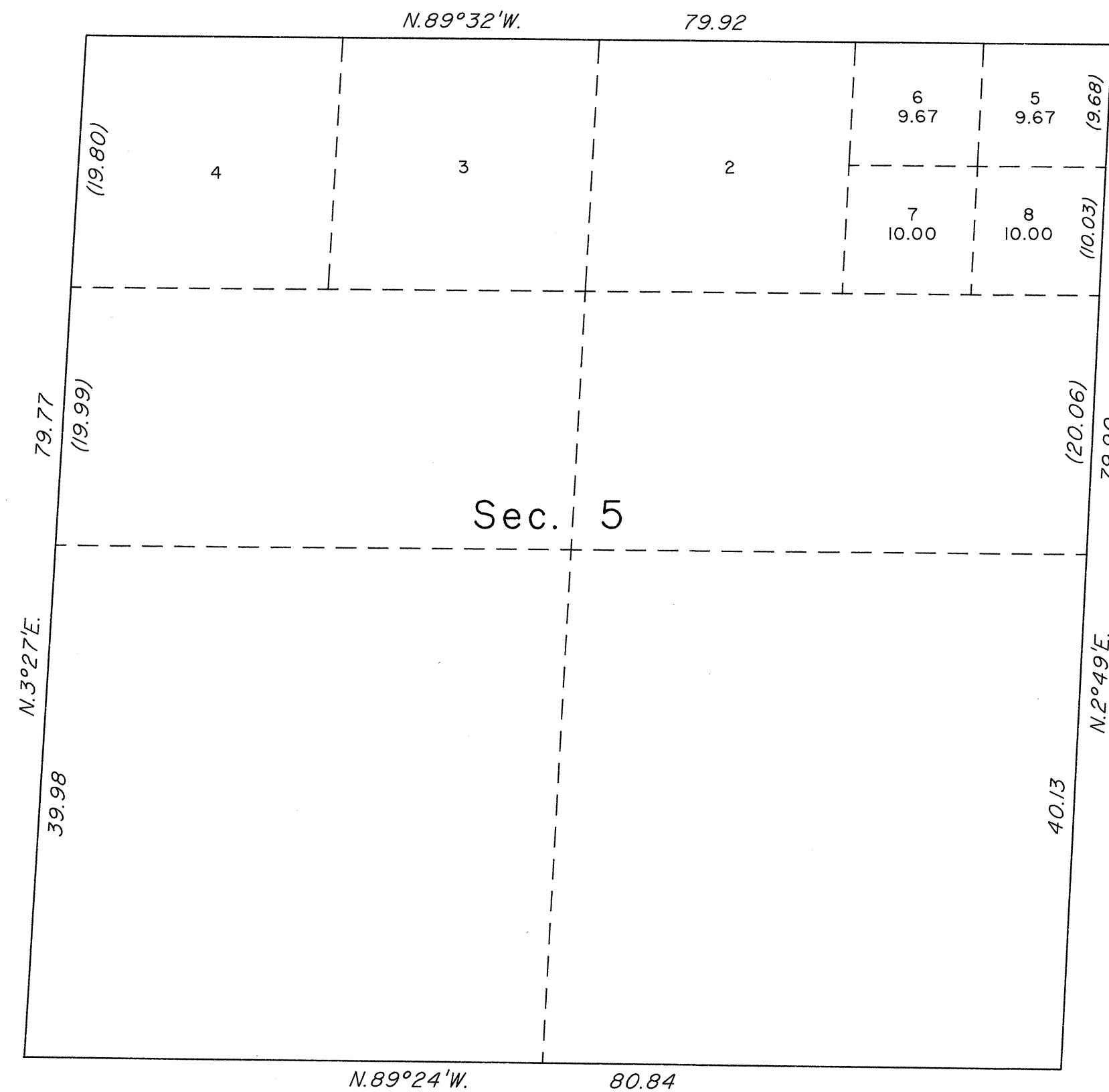
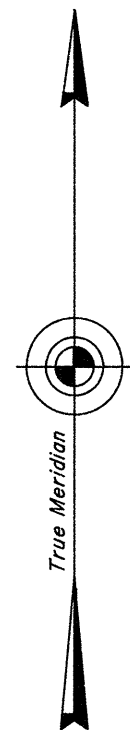


TOWNSHIP 42 NORTH, RANGE 60 EAST, MOUNT DIABLO MERIDIAN, NEVADA
SUPPLEMENTAL PLAT OF SECTION 5



This plat represents an amended lotting of original lot 1, of sec. 5, T. 42 N., R. 60 E., Mount Diablo Meridian, Nevada, and is based upon the plat approved April 19, 1881, and the plat accepted March 24, 1889.

UNITED STATES DEPARTMENT OF THE INTERIOR
BUREAU OF LAND MANAGEMENT

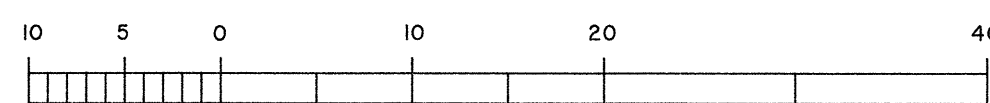
Reno, Nevada June 23, 1992

This plat, showing amended lottings, is based upon the official records, and having been correctly prepared in accordance with the regulations of this Bureau, is hereby accepted.

For the Director

John S. Parrish

Chief Cadastral Surveyor, Nevada



Scale in Chains