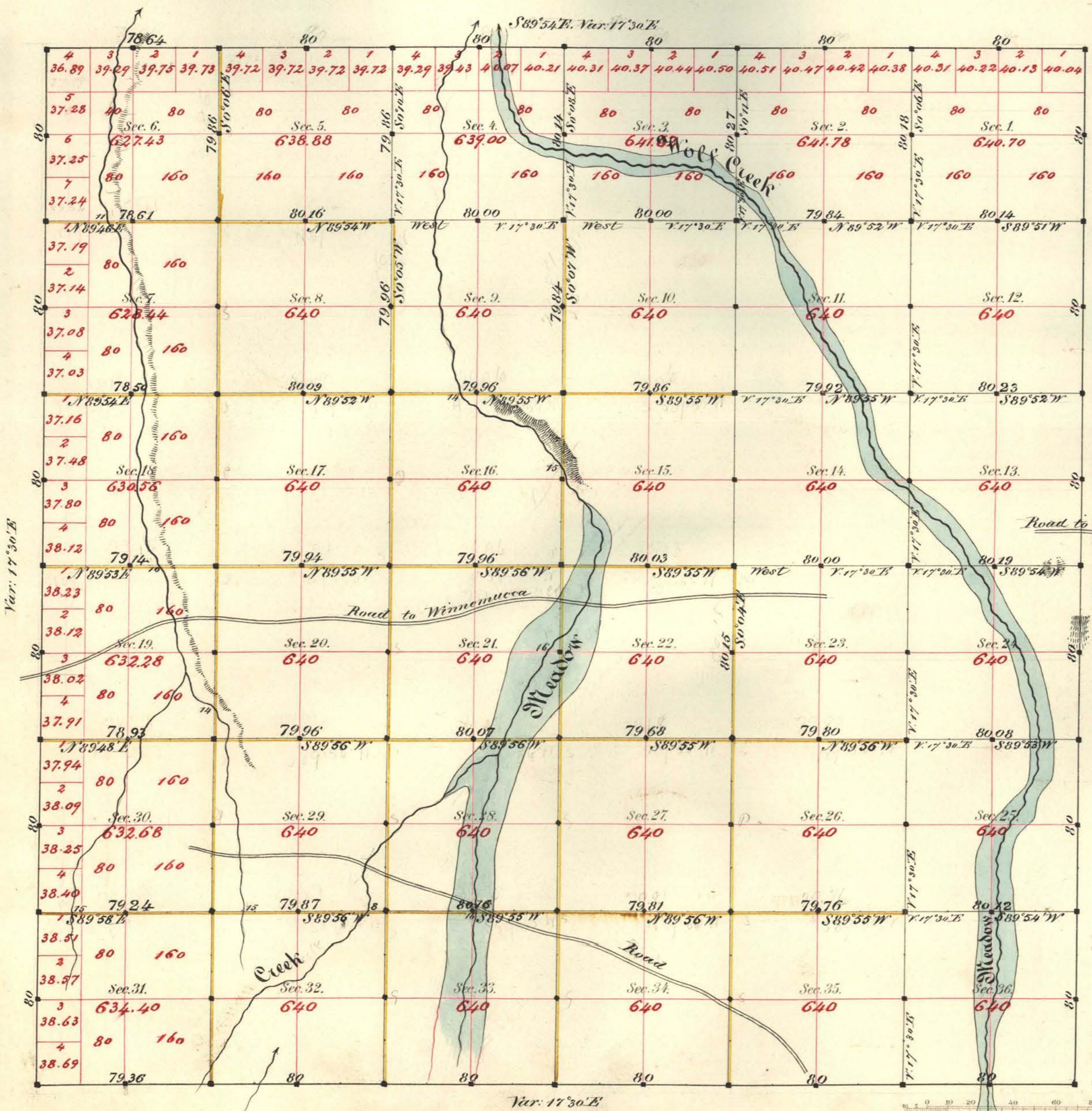


TOWNSHIP N^o 42 NORTH RANGE N^o 48 EAST MOUNT DIABLO MERIDIAN



Aggregate Area of Public Land Surveyed by
Hatch & Eaton, Contract April 1st 1873 7994.44 Ac.
" " of Public Land surveyed by
Bell & Bell, Contract July 15th 1882 14993.33 "
Aggregate 22987.77 Ac.

Old work commenced May 16th 1873
" " completed " 17th 1873
New work commenced Aug. 24th 1882
" " completed " 27th 1882

Subdivisions not noted run with Variation of 18° East

Surveys Designated	By Whom Surveyed	Date of Contract	Amount of Surveys	When Surveyed
Township lines	Hatch & Eaton	April 1 st 1873	36 78-80	1873
Subdivisions black	" "	" "	21 00-97	May
" yellow	Bell & Bell	July 15 th 1882	38 73-34	Aug - 1882

The above Map of Township N^o 42 North of Range N^o 48 East
Mt. Diablo Meridian is strictly conformable to the field
notes of the survey thereof on file in this Office, which have been examined and approved.
Surveyor General's Office }
Reno Nevada }
C. J. Davis }
Sur. Gen. Nevada }
Old work approved June 24th 1873
New " " October 14th 1882