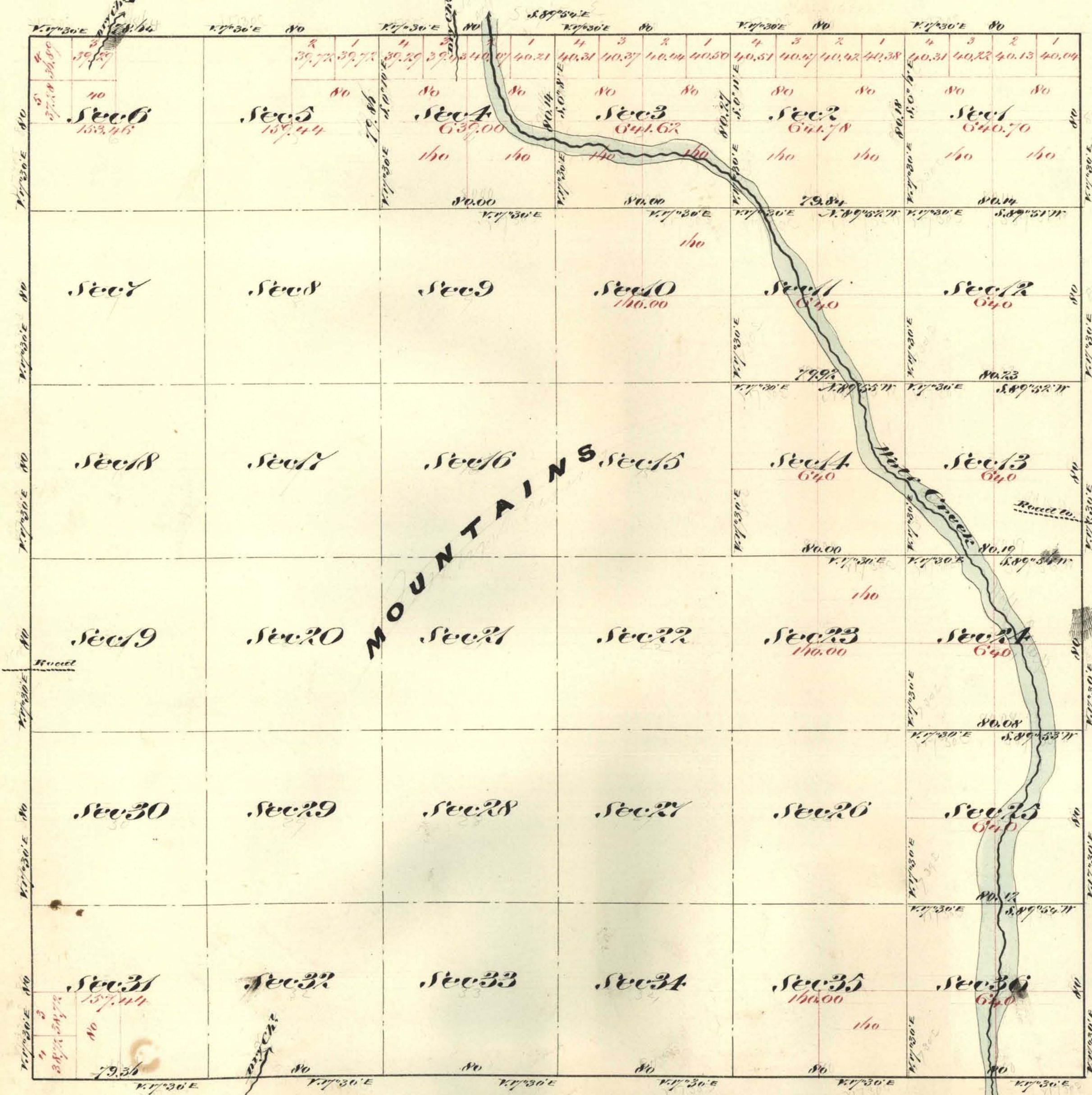


Township N^o 42 North

Range N^o 48 East

Mount Diablo Meridian



Aggregate Area of Public Land Surveyed 7,994.24 Acres
 Estimated " " Mountains (unsurveyed) 15,001.10 "
Aggregate 22,995.34 "

and work
 Commenced May 16th 1873
 Completed " 17th "
 New Work

Surveys Designated	By Whom Surveyed	Date of Contract	Am ^t of Survey \$6000.00	When Surveyed
Township Lines	A. Hatch & H. Eaton	April 1 st 1873	23 78 00	1873
Subdivision Lines	" " "	" "	21 00 97	May 1873

The above Map of Township N^o 42 North Range N^o 48 East Mount Diablo Meridian is strictly conformable to the field notes of the surveys thereof on file in this Office which have been examined and approved
 U.S. Surveyor General's Office
 Virginia City Nevada
 June 24th 1873

E. S. Davis
 U.S. Surveyor General Nevada

2