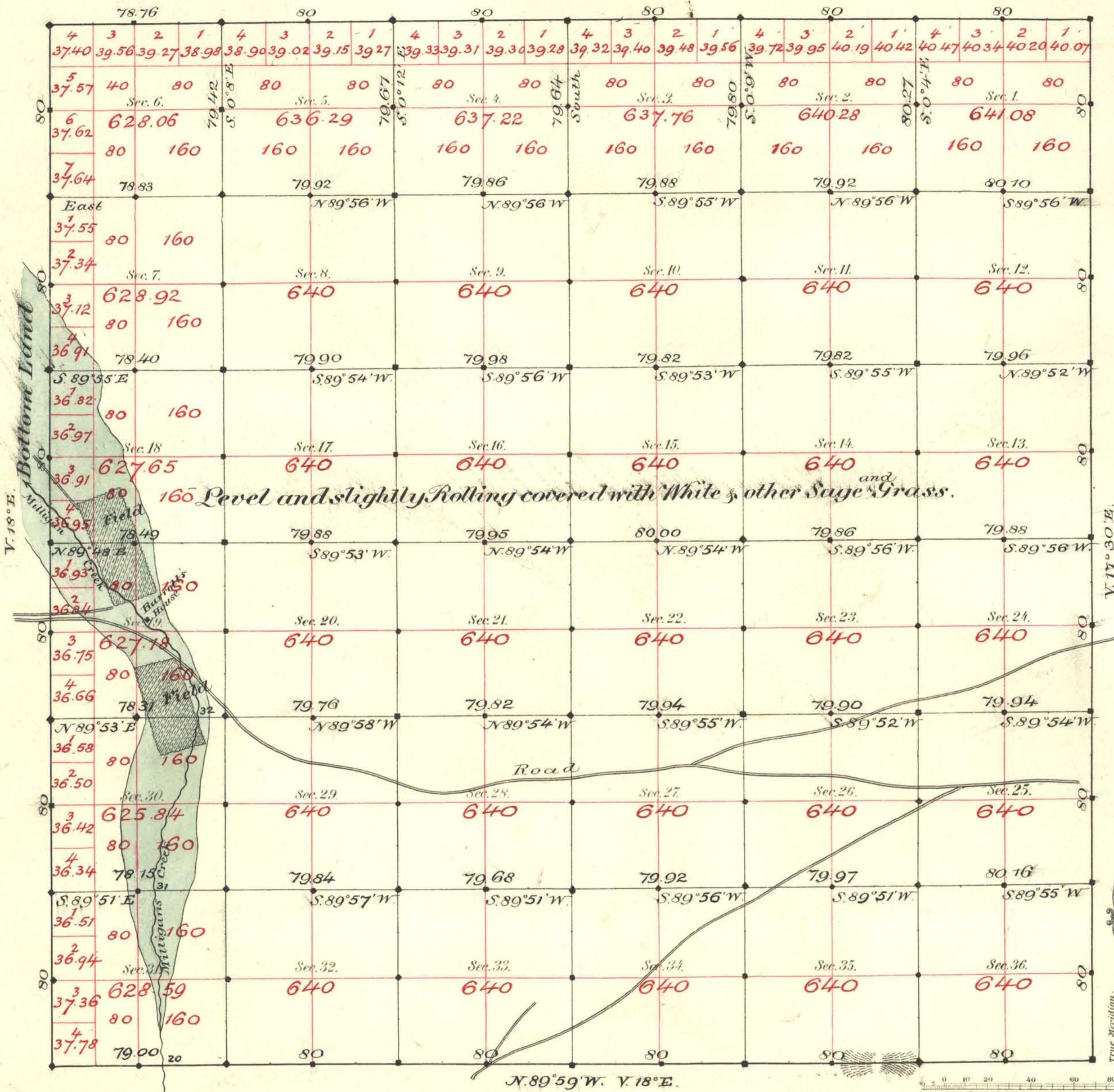


TOWNSHIP N<sup>o</sup> 42 NORTH RANGE N<sup>o</sup> 47 EAST MOUNT DIABLO MERIDIAN

N. 89° 56' W



Aggregate Area of Public Land - 22,958.87 Acs

Commenced August 28<sup>th</sup> 1882  
Completed September 2<sup>nd</sup>

Subdivisions run at a Variation 18° East

| Surveys Designated | By Whom Surveyed | Date of Contract            | Amount of Surveys | When Surveyed |
|--------------------|------------------|-----------------------------|-------------------|---------------|
| East Bay           | Hatch & Belan    | April 18 <sup>th</sup> 1873 | 6-00-00           | 1873          |
| N.W. & S. Bay      | Bell & Bell      | July 15 <sup>th</sup> 1882  | 17-77-76          | 1882          |
| Subdivisions       |                  |                             | 59-68-64          | Aug. Sept.    |

N<sup>o</sup> Corn.  
56  
147

The above Map of Township N<sup>o</sup> 42 North of Range N<sup>o</sup> 47 East of Mount Diablo Meridian is strictly conformable to the field notes of the survey thereof on file in this Office, which have been examined and approved.

Surveyor General's Office,  
Reno, Nevada  
October 14<sup>th</sup> 1882

C. J. Davis  
Sur. Gen. Nevada