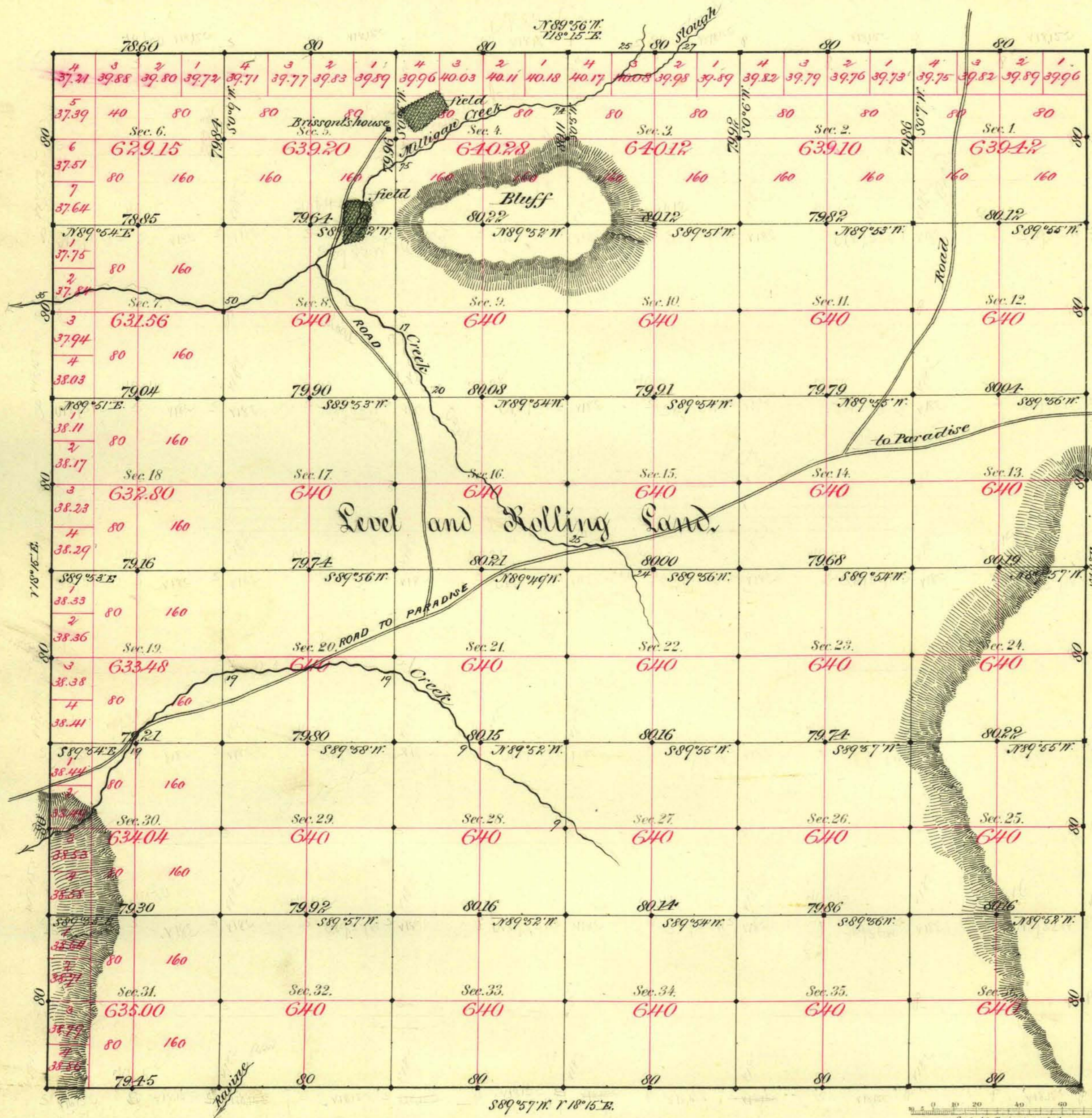


TOWNSHIP N^o 42 NORTH RANGE N^o 45 EAST

MOUNT DIABLO MERIDIAN



Aggregate Area of Public Land Surveyed 22,994.15 Acres.

Commenced August 28th 1882.
Completed September 2nd "

Subdivisions run with a Variation of 18° East.

Surveys Designated	By Whom Surveyed	Date of Contract	Amount of Surveys	When Surveyed
Township lines	Bell & Bell	July 15 th 1882	23-78 15	1882
Section lines	" "	" " " "	69-75-02	Aug., Sept. "

7th Cor.
147

The above Map of Township N. 42 North of Range N. 45 East of Mount Diablo Meridian is strictly conformable to the field notes of the survey thereof on file in this Office, which have been examined and approved.

Surveyor General's Office,
Reno, Nevada

C. L. Davis
Sur. Gen. Nevada

October 14th 1882

A. L. Bancroft & Co. Lith. S. F.