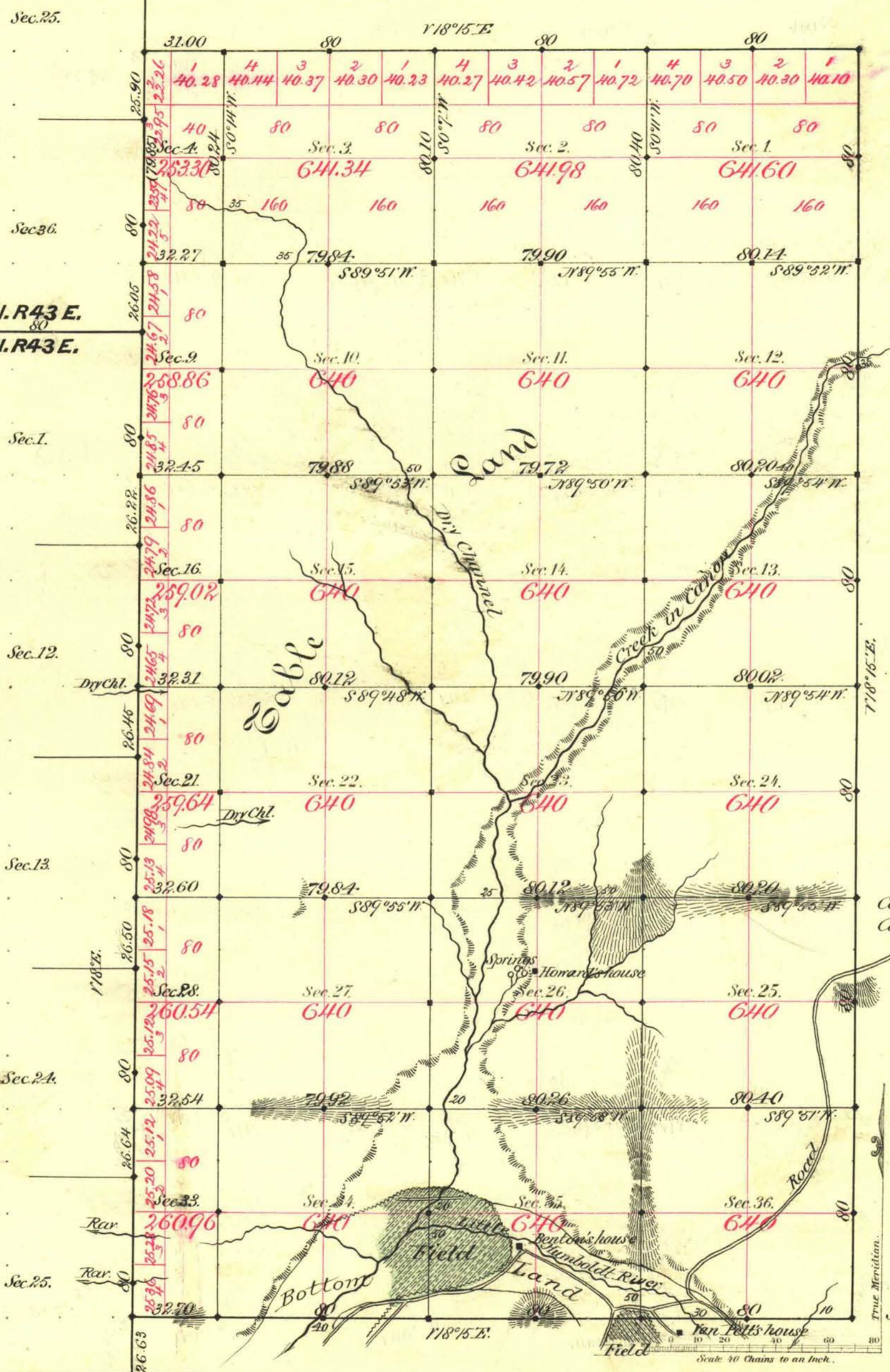


TOWNSHIP N<sup>o</sup> 42 NORTH RANGE N<sup>o</sup> 44 EAST MOUNT DIABLO MERIDIAN



Aggregate Area of Public Land Surveyed 13077.24 Acres.

Commenced Sept. 2<sup>nd</sup> 1882.  
Completed " 4<sup>th</sup> "

Subdivisions run with a bar of 18° East.

| Surveys Designated                          | By Whom Surveyed | Date of Contract           | Amount of Survey | When Surveyed |
|---|------------------|----------------------------|------------------|---------------|
| West Ady                                    | Sievers Morrison | July 21 <sup>st</sup> 1882 | 25-04-85         | 1882          |
| N.E. 1/4                                    | Bell & Bell      | " 15 <sup>th</sup> "       | 12-63-70         | "             |
| Connect <sup>n</sup> on N. 64 <sup>th</sup> | "                | "                          | 1-51-86          | Sept. "       |
| Section lines                               | "                | "                          | 35-03-37         | "             |

7<sup>th</sup> Cont  
150  
147  
"

The above Map of Township N. 42 North of Range N. 44 East of Mount Diablo Meridian is strictly conformable to the field notes of the survey thereof on file in this Office, which have been examined and approved.

Surveyor General's Office }  
Geno. Nevada }  
October 14<sup>th</sup> 1882 }  
W. S. Davis }  
Sur. Gen. Nev.