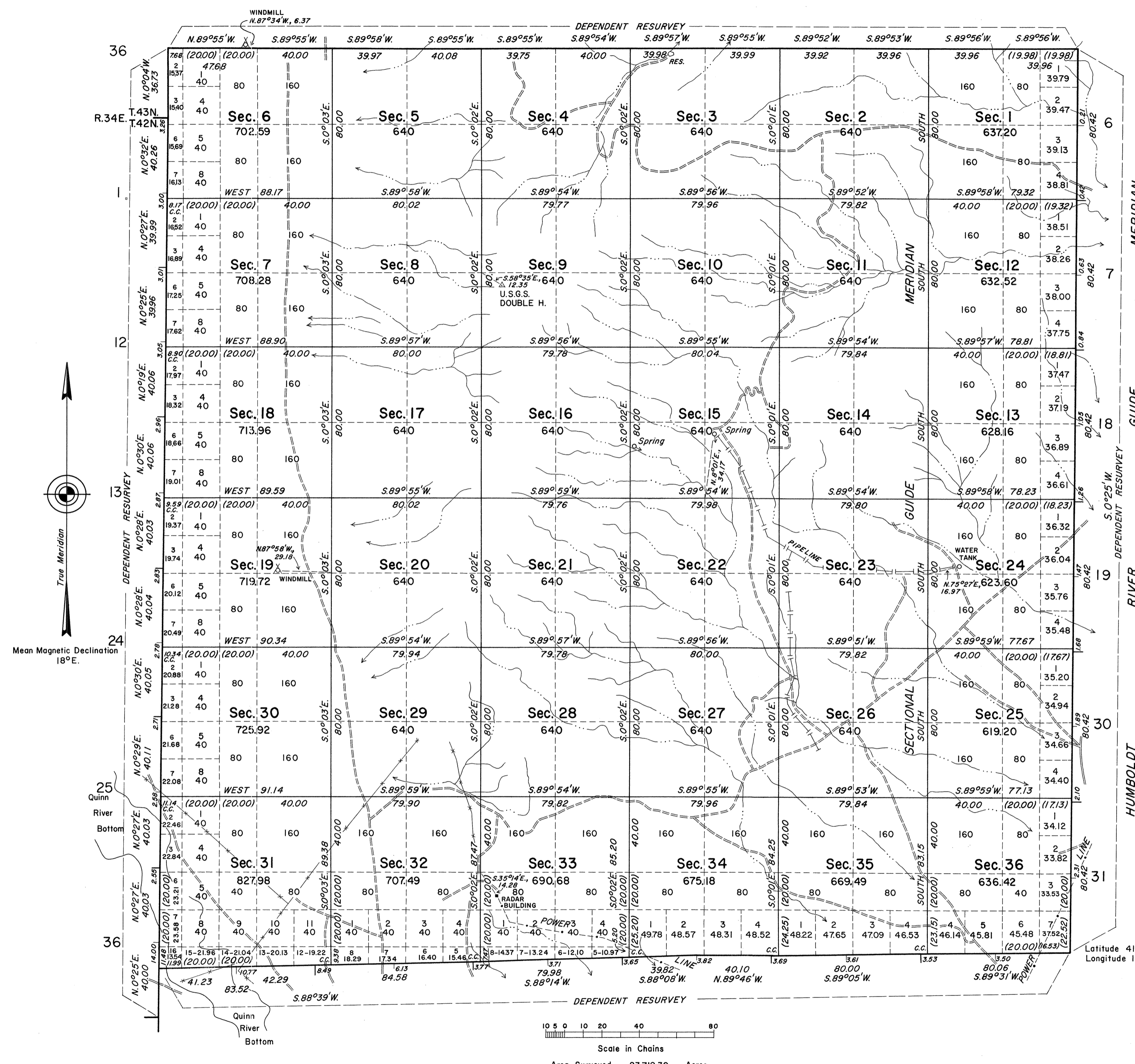


TOWNSHIP 42 NORTH, RANGE 35 EAST, OF THE MOUNT DIABLO MERIDIAN, NEVADA

OFFICIALLY FILED
NEVADA LAND OFFICE
10:00 AM APRIL 19, 1967



History of the earlier surveys is contained in the field notes.

This plat represents a dependent resurvey of the east boundary of T. 42 N., R. 34 E., a portion of the east boundary of T. 43 N., R. 34 E., the west boundary of T. 42 N., R. 36 E., the north boundary of T. 41 N., R. 35 E., and the north boundary of T. 42 N., R. 35 E., designed to restore the corners in their true original locations according to the best available evidence, and, the survey of the subdivisional lines of T. 42 N., R. 35 E., Mount Diablo Meridian, Nevada.

These surveys were executed by Dennis D. Bland, Cadastral Surveyor, August 13, 1965, to November 16, 1965, under Special Instructions dated May 4, 1965, for Group No. 428, Nevada.

UNITED STATES DEPARTMENT OF THE INTERIOR
BUREAU OF LAND MANAGEMENT
Washington, D. C. February 1, 1967

This plat is strictly conformable to the approved field notes, and the survey, having been correctly executed in accordance with the requirements of law and the regulations of this Bureau, is hereby accepted.

For the Director
D. S. Livingston
Chief, Division of Engineering