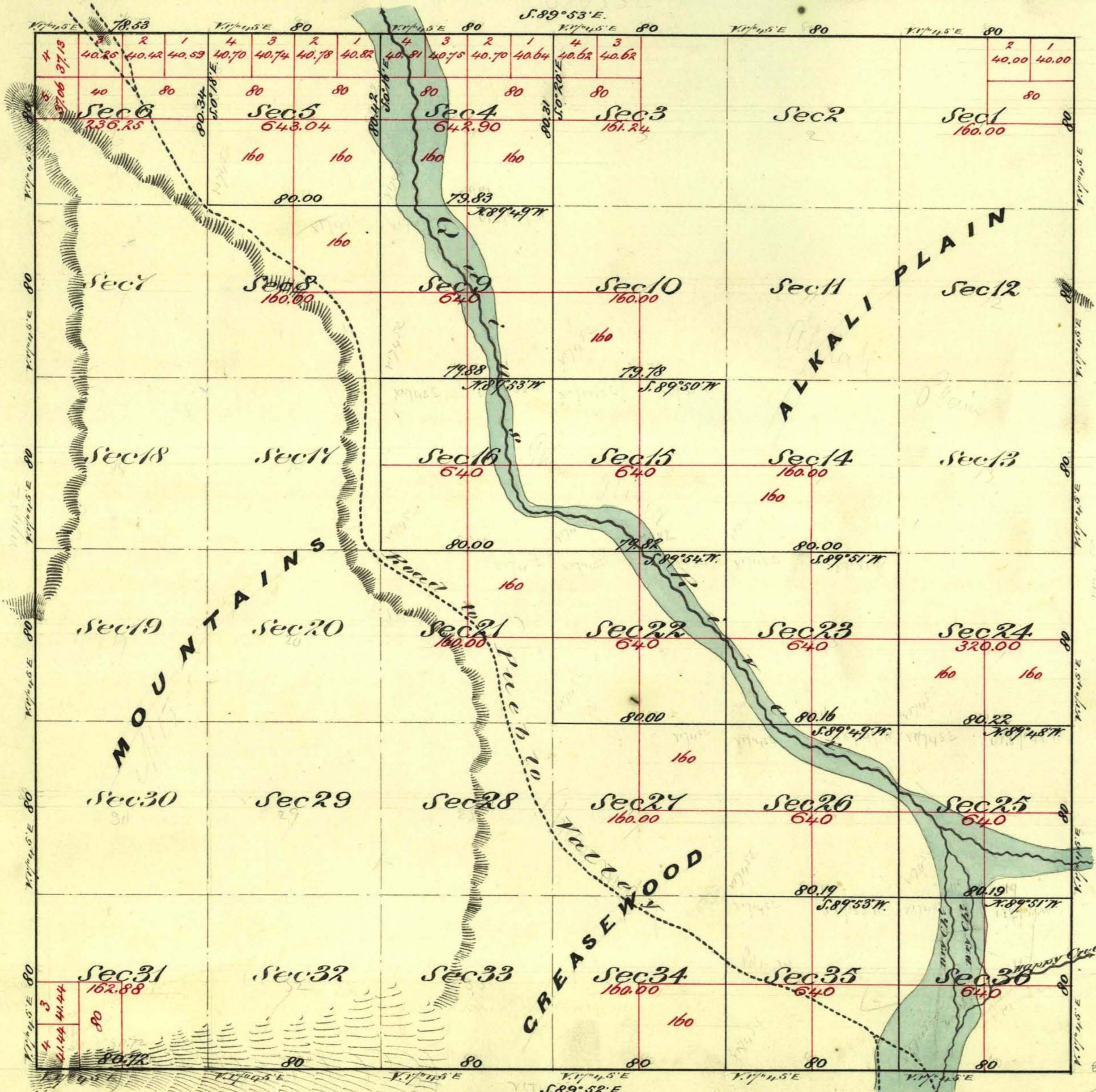


Township N<sup>o</sup> 42 North

Range N<sup>o</sup> 32 East

Mount Diablo Meridian



Aggregate Area of Public Land (Surveyed) 9,046.31 Acres  
 Estimated " " Mountains & Alkali Plain (unsurveyed) 13,907.16 "  
 Aggregate 22,953.47 "

Commenced September 23<sup>rd</sup> 1873  
 Completed " " 26<sup>th</sup> "

Subdivision lines not otherwise noted run with a variation of 1/4" to 1/2"  
 The above Map of Townships N42 North Range N32 East Mount Diablo Meridian  
 is strictly conformable to the field notes of the surveys thereof on file in this office  
 which have been examined and approved  
 U.S. Surveyor General's Office  
 Virginia City Nevada  
 November 6<sup>th</sup> 1873

Sheet 41

Surveys Designated	By Whom Surveyed	Date of Contract	Acres of Survey	When Surveyed	3 <sup>rd</sup> Cont.
Township Lines	W. W. Skinner & W. Jarvis & H. B. Poole	July 10 <sup>th</sup> 1873	23 79 25	1873	58
Subdivision "	" " " " " "	" " "	27 01 14	Sept 1873	"

E. S. Davis  
 U.S. Surveyor General Nevada