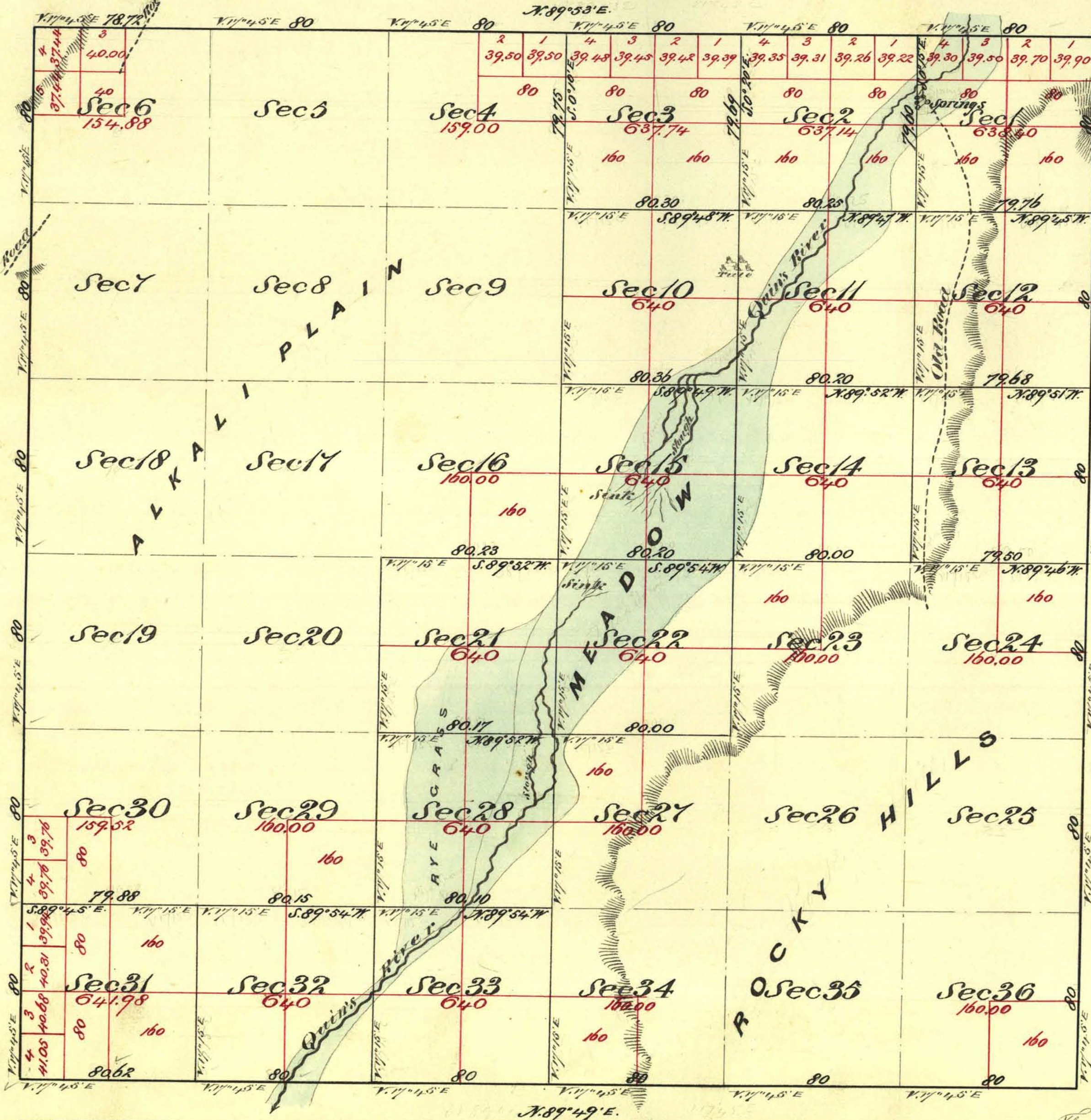


Township N^o 42 North

Range N^o 3 East

Mount Diablo Meridian



Aggregate Area of Public Land (Surveyed)	11,888.55 Acres	11,888.55
Estimated " " Alkali Plain (unsurveyed)	7,495.24 "	7,495.24
" " " Rocky Hills (unsurveyed)	4,320.00 "	4,320.00
Aggregate	23,004.10 "	23,004.10

Commenced Dec^r 2nd 1874
 Completed " 5th 1874

Surveys Designated	By Whom Surveyed	Date of Contract	Am ^t of Money Adv ^d ch ^d to	When Surveyed	7 th Cor.
Township Lines	W. Farside W. Kinross H. B. Peck	July 10 th 1873	23 79 34	1873	58
Subdivision "	G. W. Farside	August 12 th 1874	31 79 82	Dec ^r 1874	65

The above Map of Township N^o 42 North Range N^o 3 East Mount Diablo Meridian is strictly conformable to the field notes of the surveys there of on file in this Office which have been examined and approved
 W. S. Surveyor General's Office
 Virginia City Nevada
 December 28th 1874

0841

T 42 N, R 3 E

E. S. Davis

W. S. Surveyor General Nevada

V.D.