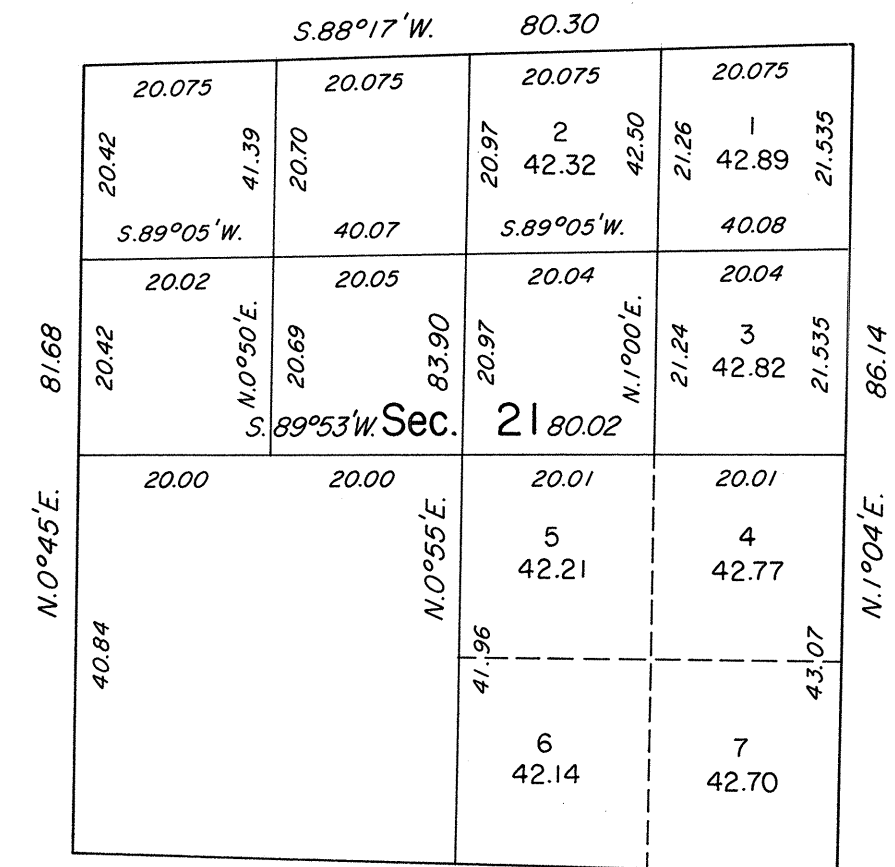
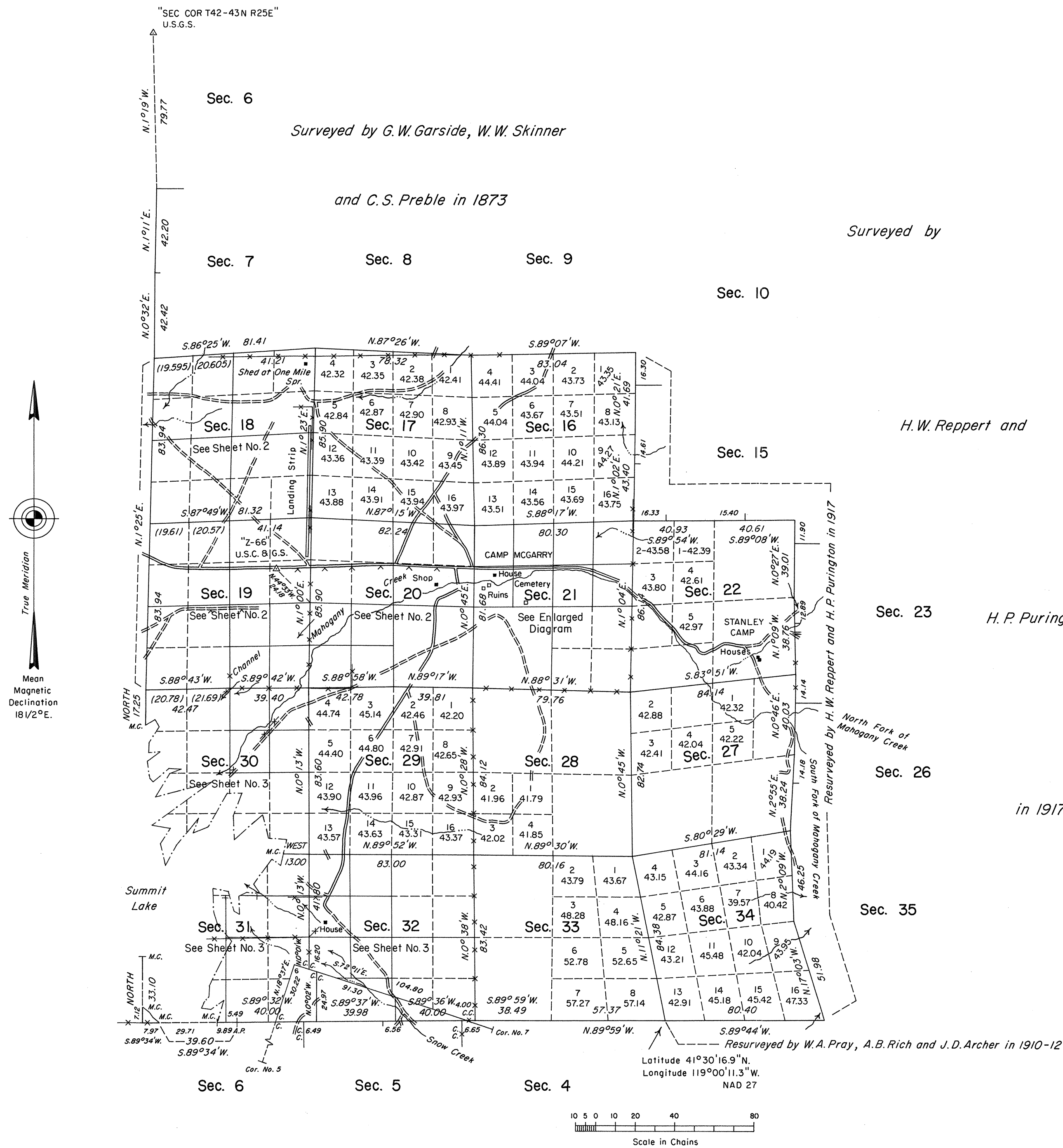


# TOWNSHIP 42 NORTH, RANGE 26 EAST, OF THE MOUNT DIABLO MERIDIAN, NEVADA

## DEPENDENT RESURVEY AND SUBDIVISION OF SECTIONS

## ENLARGED DIAGRAM

OFFICIALLY FILED  
NEVADA STATE OFFICE  
at 10:00 AM on May 17, 1995



A history of surveys is contained in the field notes.

A dependent resurvey of a portion of the west boundary was executed concurrently under Township 42 North, Range 25 East of this same Group.

This plat, in three sheets, represents the dependent resurvey of portions of the south boundary, subdivisional lines, 1873 meander lines of Summit Lake, and the Camp McGarry Military Reservation Line, designed to restore the corners in their true original locations according to the best available evidence, and the subdivision of certain sections, and the survey of the 1988-1991 meander lines of a portion of Summit Lake, Township 42 North, Range 26 East, Mount Diablo Meridian, Nevada.

Except as indicated hereon, the lottings and areas are as shown on the plats approved October 31, 1873 and September 20, 1917.

Survey executed by Robert A. Pratt, Cadastral Surveyor, beginning May 3, 1988, and completed November 11, 1993, pursuant to Special Instructions dated April 11, 1988, for Group No. 655, Nevada.

UNITED STATES DEPARTMENT OF THE INTERIOR  
BUREAU OF LAND MANAGEMENT

Reno, Nevada March 16, 1995

This plat is strictly conformable to the approved field notes, and the survey, having been correctly executed in accordance with the requirements of law and the regulations of this Bureau, is hereby accepted.

For the Director

*John S. Parish*

Chief Cadastral Surveyor, Nevada

T.42N., R.26E., M.D.M.

RHT