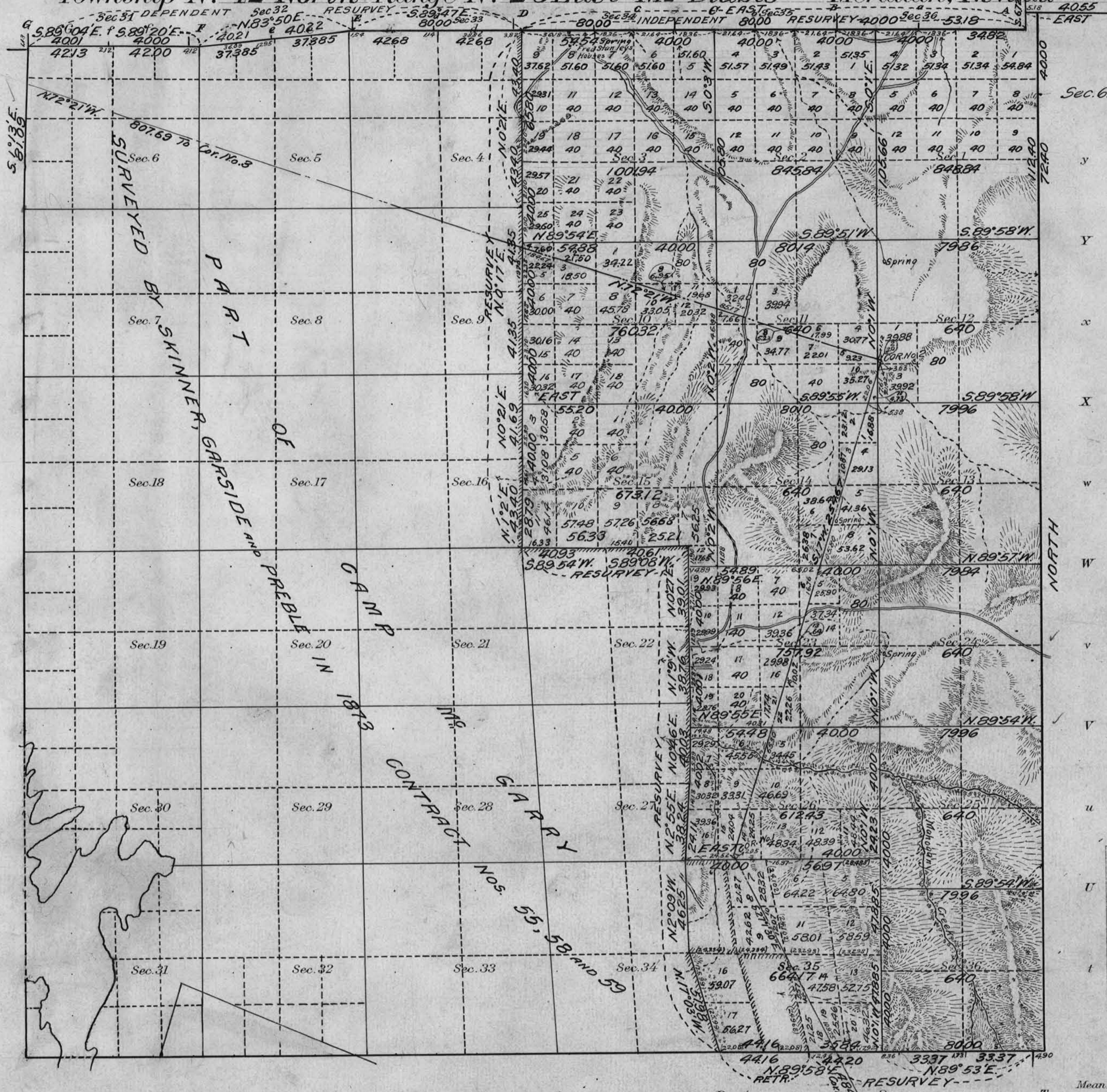


# Township No 42 North Range No 26 East Mt Diablo Meridian, Nevada



Areas in Acres	
Public Land	776326
Indian Reservation	
Indian Allotments	
Mineral Claims	
Water Surface	
Military Reserve	286132
<b>Total Area</b>	<b>1064458</b>

Scale 40 Chains to an inch  
 Mean Magnetic Declination 18° 30' E.  
 Latitude 41° 30' N  
 Longitude 118° 59' W

Surveys Designated	By Whom Surveyed	Group		Amount of Surveys			When Surveyed	
		No.	Date	Mts.	chs.	lks.	Begun	Completed
North Boundary Res.	H.W. Reppert and	52	Mar. 16, 1917	6	60	89	June 26, 1917	Aug. 25, 1917
East Boundary	Heber F. Furington	"	July 26, 1917	6	32	40	Aug. 18, 1917	Aug. 21, 1917
South Boundary Res.	"	"	"	2	00	00	Aug. 17, 1917	Aug. 18, 1917
Subdivision Res.	"	"	"	7	30	40	June 29, 1917	Aug. 24, 1917
Subdivision	"	"	"	22	47	70	Aug. 27, 1917	Aug. 27, 1917

The above map of Township No. 42 North Range No. 26 East of the Mt. Diablo Meridian, Nevada is strictly conformable to the field notes of the survey thereof on file in this office, which have been examined and approved

U.S. Surveyor General's Office.  
 Reno, Nevada, March 11, 1919

*John B. Sullivan*  
 Surveyor General.