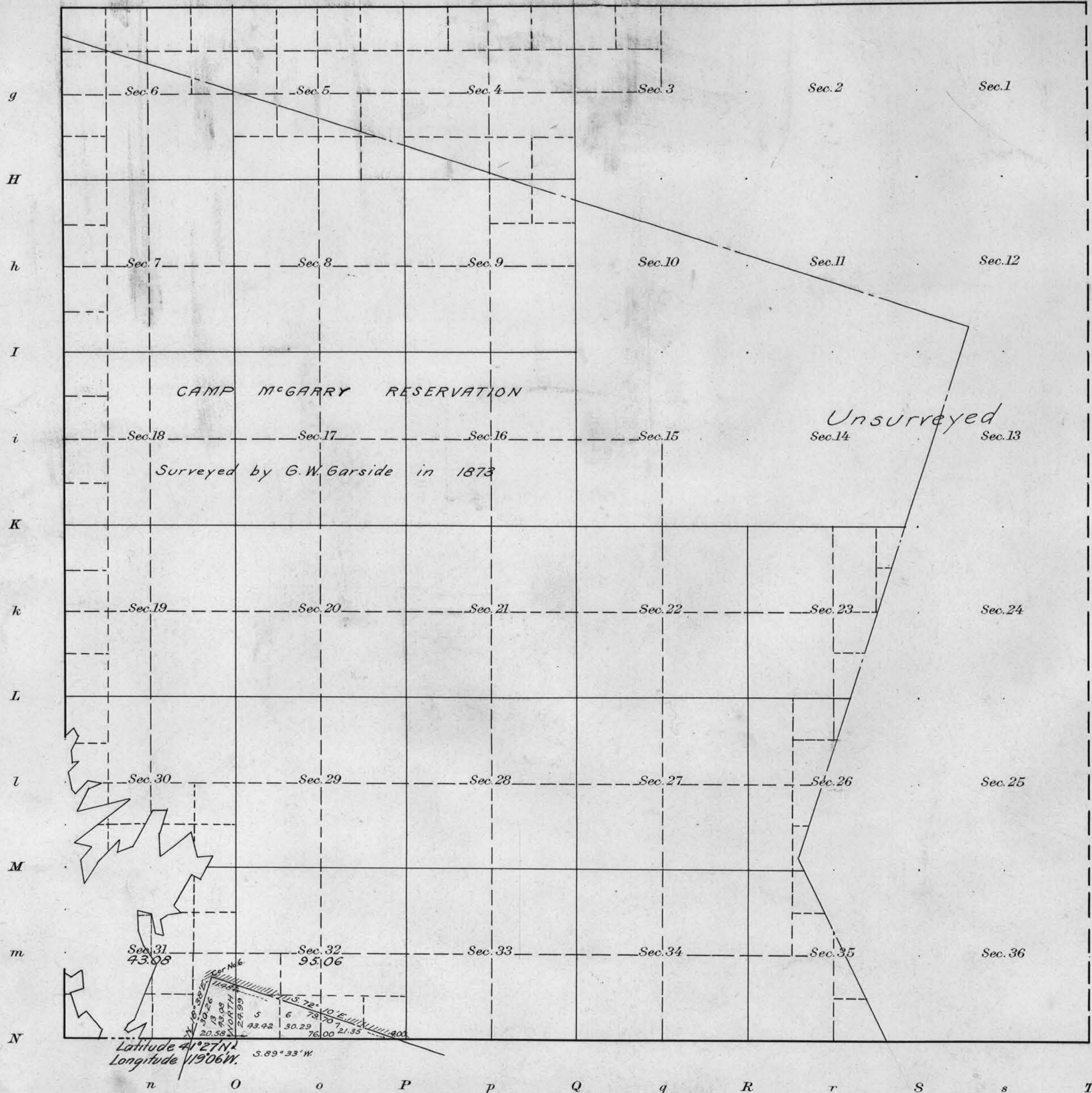


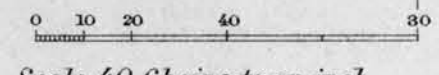
Township No. 42 North Range No. 26 East Mt. Diablo Meridian, Nevada

G f F e E d D c C b B a A



y
Y
x
X
w
W
v
V
u
u
t
T

Areas in Acres	
Public Land	138.14
Indian Reservation	
Indian Allotments	
Mineral Claims	
Water Surface	
Total Area	138.14



Mean Magnetic Declination

Surveys Designated	By Whom Surveyed	Group		Amount of Surveys		When Surveyed		
		No.	Date	Mls.	chs.	lks.	Begun	Completed
Subdivision	H.W. Reppert	45	July 10, 1916	24	99		August 25, 1916	
Camp McGarry-Resurvey	A.B. Rich	3	Aug. 1, 1910				Dec 4	Dec 24, 1910
S. Boundary	A.B. Rich	3	Aug. 1, 1910				Nov. 17,	Nov. 23, 1910

The above map of Township No. 42 North Range No. 26 East of the Mt. Diablo Meridian Nevada is strictly conformable to the field notes of the survey thereof on file in this office, which have been examined and approved.

U.S. Surveyor General's Office.
Reno, Nevada September 20, 1917.
John B. Sullivan
Surveyor General.

H.S.P.