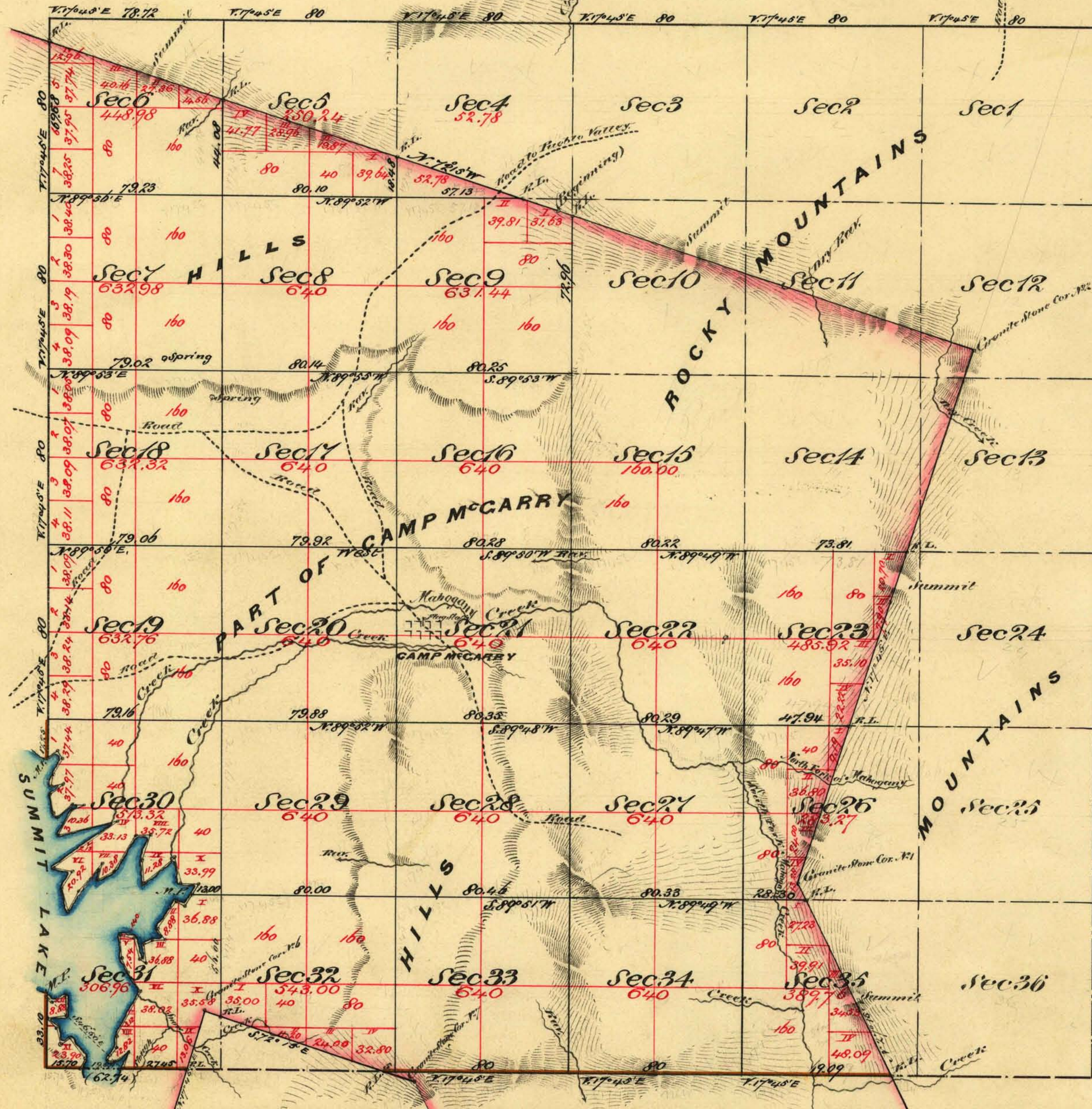


Township N^o 42 North

Range N^o 26 East

Mount Diablo Meridian



Meanders of Summit Lake

Sec	Courses	Distances	Sec	Courses	Distances	Sec	Courses	Distances	Sec	Courses	Distances
Beginning at a	30	N. 74 1/2° E	29.00	31	S. 12 3/4° W	5.75	31	S. 80° E	4.00		
Point 17.25 chs South of	"	S. 54° W	36.75	"	N. 34 1/2° E	5.06	"	N. 65° E	8.00		
Articles 19, 24, 25 & 30	"	S. 80 1/2° E	9.00	"	S. 36 1/4° W	15.00	"	S. 17 1/2° W	11.00		
Turn N. 25° 42' E	"	S. 32° W	9.00	"	S. 35° E	6.00					
thence		"	S. 15 1/2° E	11.00	"	N. 85 1/2° W	7.00	15.70 chs East of cor.			
30	N. 61° E	5.00	"	N. 27°	11.00	"	S. 6 1/2° W	4.00	To corner N. 20° 26' E		
"	S. 31°	4.00	"	S. 39°	17.00	"	S. 3° E	9.00	thence		
"	S. 32 1/4° W	9.00	"	S. 20° W	8.00	"	N. 66 1/2° W	3.00	31	N. 26° E	5.50
"	S. 1 1/2°	5.00	"	N. 67 1/2° E	8.00	"	S. 15 1/2°	10.00	"	S. 37° W	12.00
"	N. 85 1/2° E	6.00	"	S. 29 1/2°	19.00	"	S. 77 1/2°	7.00	"	S. 55 1/2°	5.00
"	S. 33 1/4° W	8.00	"	S. 86 1/4°	7.00	"	S. 2° 1/2° E	11.00	"	N. 9°	8.00
"	S. 10° E	9.00	"	S. 28° W	12.00	"	S. 19 1/2°	7.00	"	S. 50°	6.50
"	S. 43 1/4°	2.00	"	S. 3° E	11.00	"	S. 36 1/2°	10.00	"	S. 85° E	9.00
"	N. 50°	10.00	"	N. 47°	19.00	"	S. 27 1/2° W	23.00	"	S. 2° 1/2° W	10.00
"	S. 87 1/2°	6.00	"	S. 12 1/4°	12.00	"	South	5.00	"	S. 68°	8.00
"	S. 70 1/2° W	6.00	"	S. 86°	9.00	"	S. 40 1/2° W	4.00	"	N. 73°	2.50
"	S. 30 1/2° W	13.50	"	S. 12 1/4° W	7.25	"	S. 25 1/4°	3.00			
		73.50			235.00			124.81			89.50
											134.81
											255.00
											75.50
											332.81

6 miles 52 chs with

Note

The extent and subdivision lines as surveyed by S. N. Gauside under contract of July 9th 1873 are within the limits of Camp McGarry and charged to special appropriation

Commenced September 1 st 1873	
Completed September 5 th 1873	
Aggregate Area of Land Surveyed within Camp McGarry Reservation	13,003.73 Acres
" " Summit Lake	426.53 "
Estimated " " Raven Mountains unsurveyed	9,587.73 "
Aggregate	23,018.09 "

Subdivision lines not otherwise noted run with a variation of 1/4° E

The above Map of Township N^o 42 North Range N^o 26 East Mount Diablo Meridian is strictly conformable to the field notes of the surveys thereof on file in this Office which have been examined and approved
 U. S. Surveyor General's Office
 Virginia City Nevada
 October 31st 1873

Surveys Designated	By Whom Surveyed	Date of Contract	Am't of Surveys M ^o chs. ds	When Surveyed
North West Boundary of Sp. Township lines (Yellow)	S. N. Gauside	December 7 th 1872	9 78 72	1873
Subdivision lines	"	July 9 th 1873	4 27 18	"
Meander lines	"	"	37 10 39	September 1873
	"	"	6 52 81	"

No. 55 59

0566

E. S. Davis

T 42 N, R 26 E.

U. S. Surveyor General Nevada