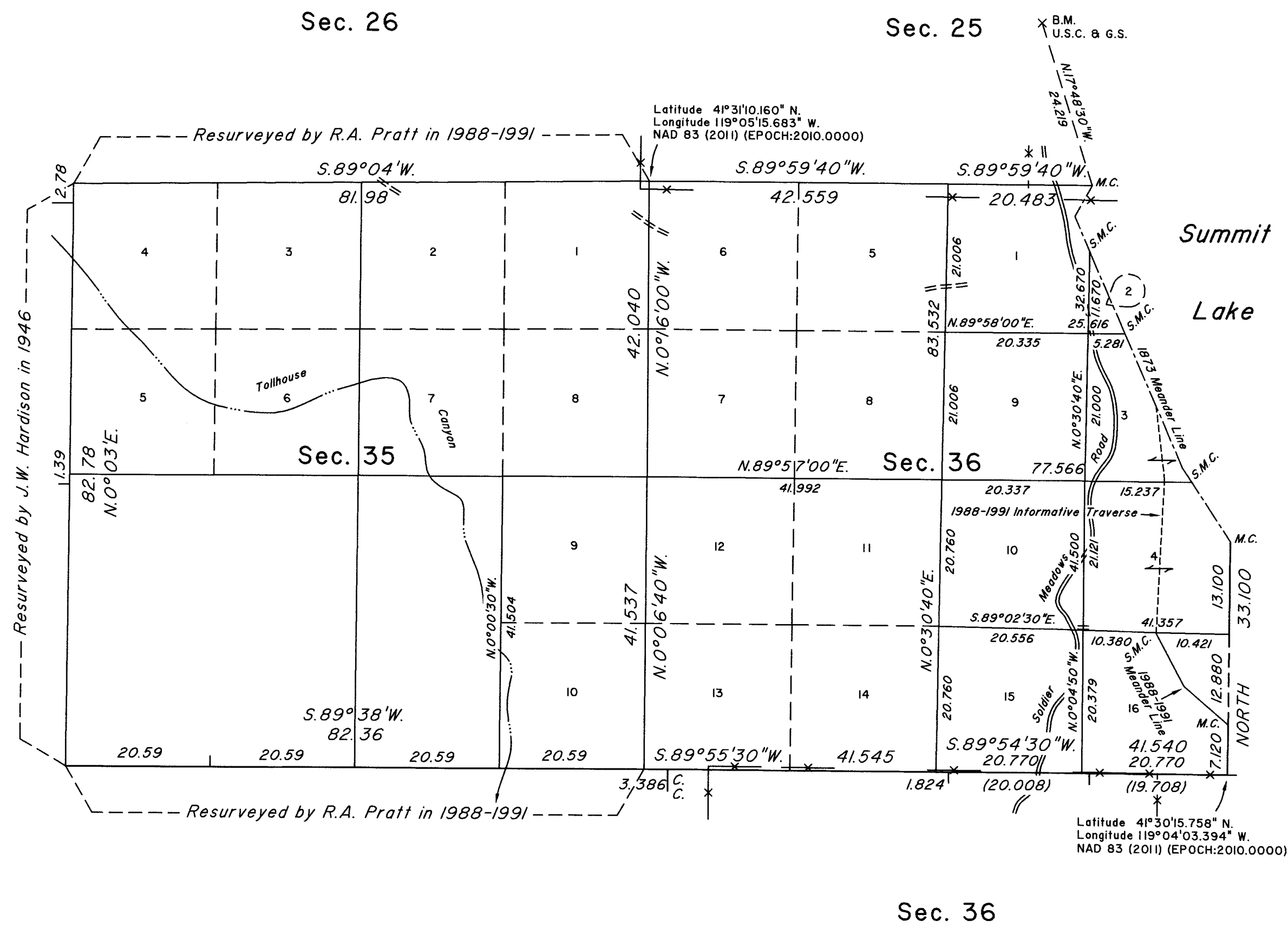
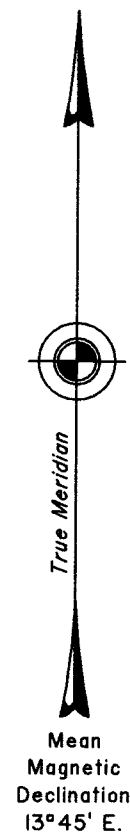


TOWNSHIP 42 NORTH, RANGE 25 EAST, OF THE MOUNT DIABLO MERIDIAN, NEVADA
DEPENDENT RESURVEY AND SUBDIVISION



A history of surveys is contained in the field notes.

This plat represents the dependent resurvey of a portion of the south boundary, a portion of the east boundary, a portion of the subdivisional lines, a portion of the 1873 meander lines of Summit Lake and a portion of the 1988-1991 meander lines of Summit Lake, designed to restore the corners in their true original locations according to the best available evidence, the further subdivision of section 35 and the subdivision of section 36, Township 42 North, Range 25 East, Mount Diablo Meridian, Nevada.

Except as indicated hereon, the lottings and areas are as shown on the plat approved October 31, 1873 and the plat accepted March 16, 1995.

For those lines not showing bearings and distances refer to the prior official records.

Survey executed by Daniel A. Rash and Stephen J. Grimaldi, Cadastral Surveyors, beginning October 10, 2017 and completed September 10, 2018, pursuant to Special Instructions dated, September 19, 2017, for Group No. 975, Nevada.

UNITED STATES DEPARTMENT OF THE INTERIOR
BUREAU OF LAND MANAGEMENT

Reno, Nevada May 17, 2019

This plat is strictly conformable to the approved field notes, and the survey, having been correctly executed in accordance with the requirements of law and the regulations of this Bureau, is hereby accepted.

For the Director

Chief Cadastral Surveyor for Nevada

