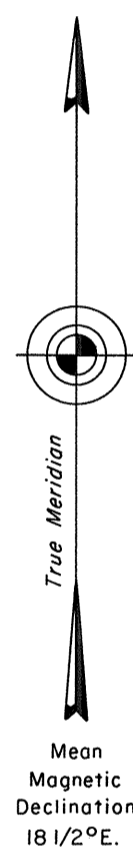


TOWNSHIP 42 NORTH, RANGE 25 EAST, OF THE MOUNT DIABLO MERIDIAN, NEVADA

DEPENDENT RESURVEY AND SUBDIVISION OF SECTION 35

ENLARGED DIAGRAM

OFFICIALLY FILED
NEVADA STATE OFFICE
at 10:00 AM on May 17, 1995



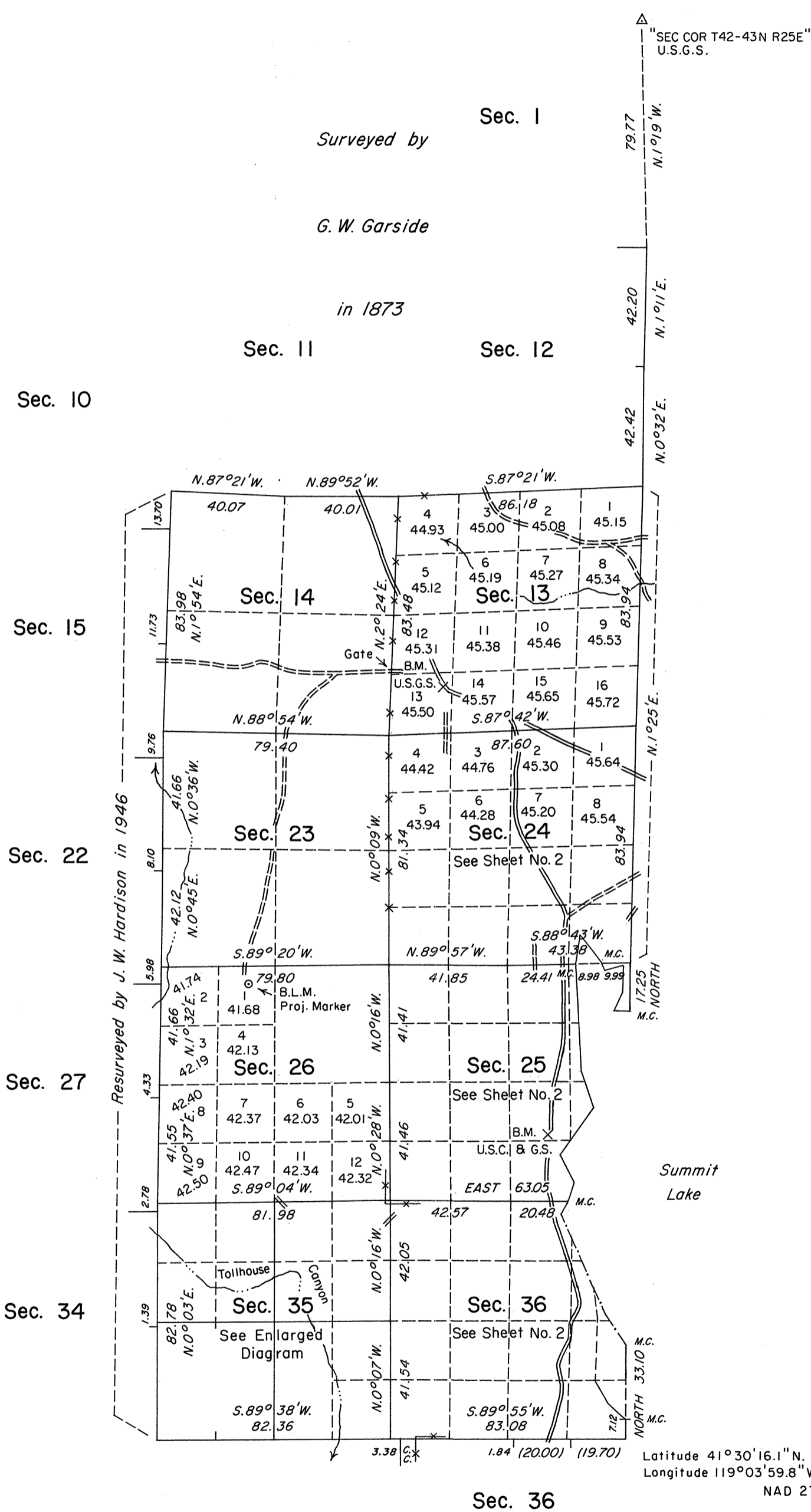
Surveyed by

Surveyed by
G. W. Garside

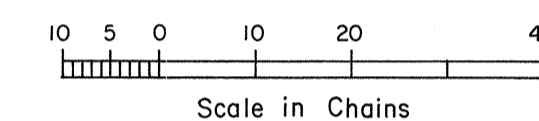
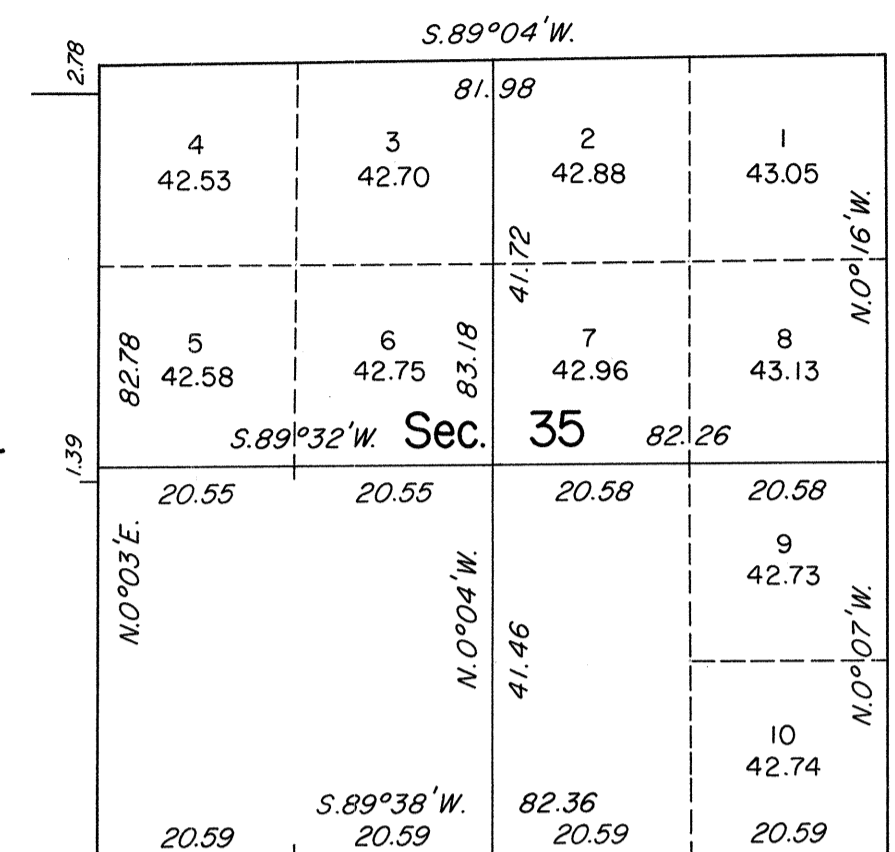
in 1873

Surveyed by
J. W. Hardison

in 1946



Sec. 34



A history of surveys is contained in the field notes.

This plat, in two sheets, represents the dependent resurvey of portions of the south boundary, east boundary, subdivisional lines, and 1873 meander lines of Summit Lake, designed to restore the corners in their true original locations according to the best available evidence, and the subdivision of section 35, and the survey of the 1988-1991 meander lines and an informative traverse of the 1988-1991 bank of a portion of Summit Lake, Township 42 North, Range 25 East, Mount Diablo Meridian, Nevada.

Except as indicated hereon, the lottings and areas are as shown on the plat approved October 31, 1873.

Survey executed by Robert A. Pratt, Cadastral Surveyor, beginning May 3, 1988, and completed December 3, 1991, pursuant to Special Instructions dated April 11, 1988, for Group No. 655, Nevada.

UNITED STATES DEPARTMENT OF THE INTERIOR
BUREAU OF LAND MANAGEMENT

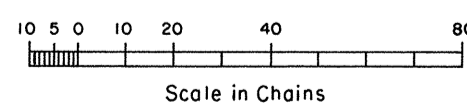
Reno, Nevada March 16, 1995

This plat is strictly conformable to the approved field notes, and the survey, having been correctly executed in accordance with the requirements of law and the regulations of this Bureau, is hereby accepted.

For the Director

John S. Parish

Chief Cadastral Surveyor, Nevada



Latitude 41°30'16.1"N,
Longitude 119°03'59.8"W,
NAD 27