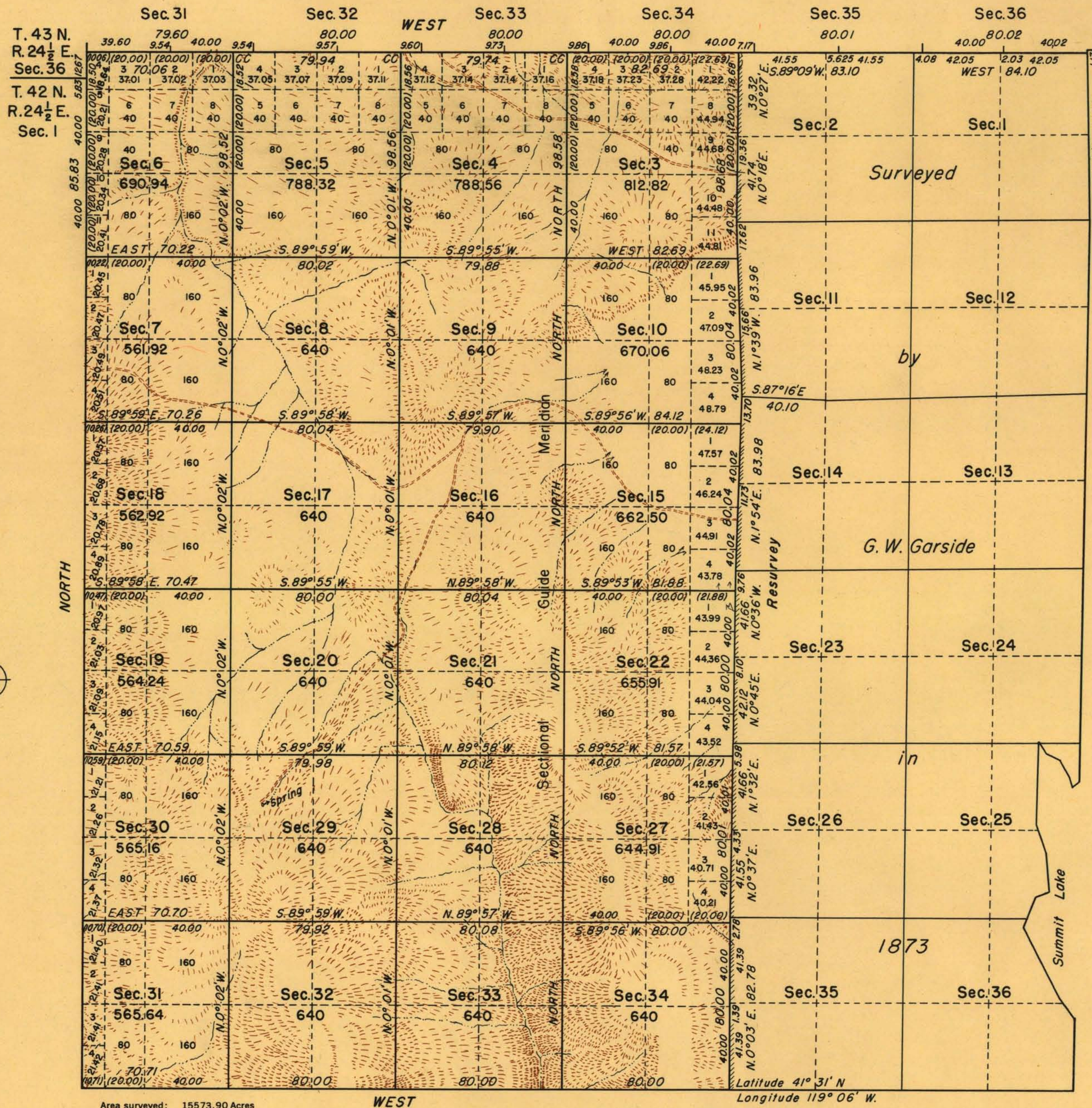


# TOWNSHIP N° 42 NORTH, RANGE N° 25 EAST, OF THE MOUNT DIABLO MERIDIAN, NEVADA.



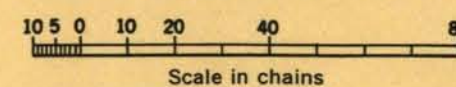
T. 43 N.  
R. 24 1/2 E.  
Sec. 36  
T. 42 N.  
R. 24 1/2 E.  
Sec. 1



Area surveyed: 15573.90 Acres

North boundary surveyed in 1917 and 1918.

West boundary and portion of South boundary and subdivisional lines surveyed by James W. Hardison, beginning July 26, 1946, and completed October 18, 1946, pursuant to special instructions for Group No. 342, dated April 17, 1946.



UNITED STATES DEPARTMENT OF THE INTERIOR  
BUREAU OF LAND MANAGEMENT

Washington, D. C. September 27, 1948  
This plat is strictly conformable to the approved field notes, and the survey, having been correctly executed in accordance with the requirements of law and the regulations of this bureau, is hereby accepted.

For the Director:

*William F. Richards*

Acting Chief, Branch of Surveys