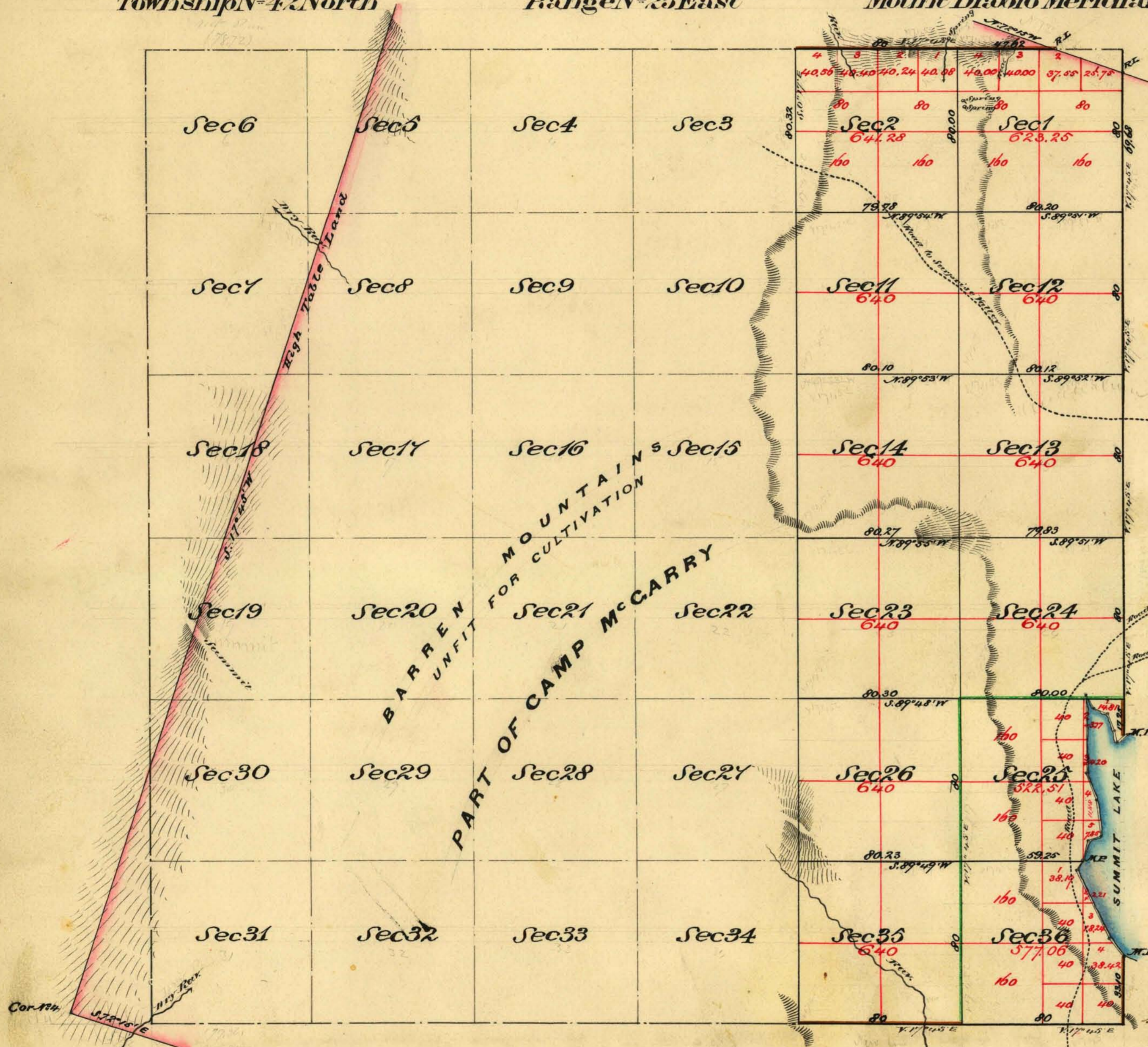


Township N^o 42 North

Range N^o 25 East

Mount Diablo Meridian



Meanders of Summit Lake					
N ^o	Course	Distance	N ^o	Course	Distance
Beginning at a	North	7.75	1	S 25 1/2° E	7.55
Point 53.00 Ch. North	S 12 1/2° W	10.00	"	S 70° W	8.00
to Cor. to Turraz N	"	7.00	"	S 55° W	8.00
to S 25 1/2° E Thence	"	18.00	"	S 14° W	6.00
to S 73 1/2° W	S 17 1/2° W	14.00	"	S 73 1/2° W	14.00
"	S 25 1/2° W	37.00	"	North	39.50

48.00 93.35 34.25
 93.25
 48.00
 176.30 ch
 2 mile 14 1/2 fms

Aggregate Area of Land Surveyed within Camp McCarry Reservation	7,484.10 Acres
Summit Lake	182.04 "
Estimated " " Barren Mountains unfit for Cultivation	15,334.51 "
	23,000.65 "

Note
 The Exterior and Subdivision Lines as Surveyed by G. W. Garside under contract of July 9th 1873 are within the limits of Camp McCarry and changed to special appropriation

Commenced August 27th 1873
 Completed " 29th "

Subdivision lines not otherwise noted run with a variation of 17° 45' E
 The above Maps of Township N^o 42 North Range N^o 25 East Mount Diablo Meridian is strictly conformable to the field notes of the Survey thereof on file in this office which have been examined and approved
 U.S. Surveyor General's Office
 Virginia City Nevada
 October 31st 1873

Surveys Designated	By Whom Surveyed	Date of Contract	Am ^t of Sur ^{veys} Mo chs Hs	When Surveyed	N ^o Cont
South East Boundary	G. W. Garside	December 7 th 1872	5 00 00	1873	55
Subdivision lines (Green)	" "	" "	3 00 00	"	"
Exterior Township lines (Yellow)	" "	July 9 th 1873	3 17 97	1873	59
Subdivision lines	" "	" "	18 60 40	August 1873	"
Meander lines	" "	" "	2 16 30	"	"

E. S. Davis
 U.S. Surveyor General Nevada