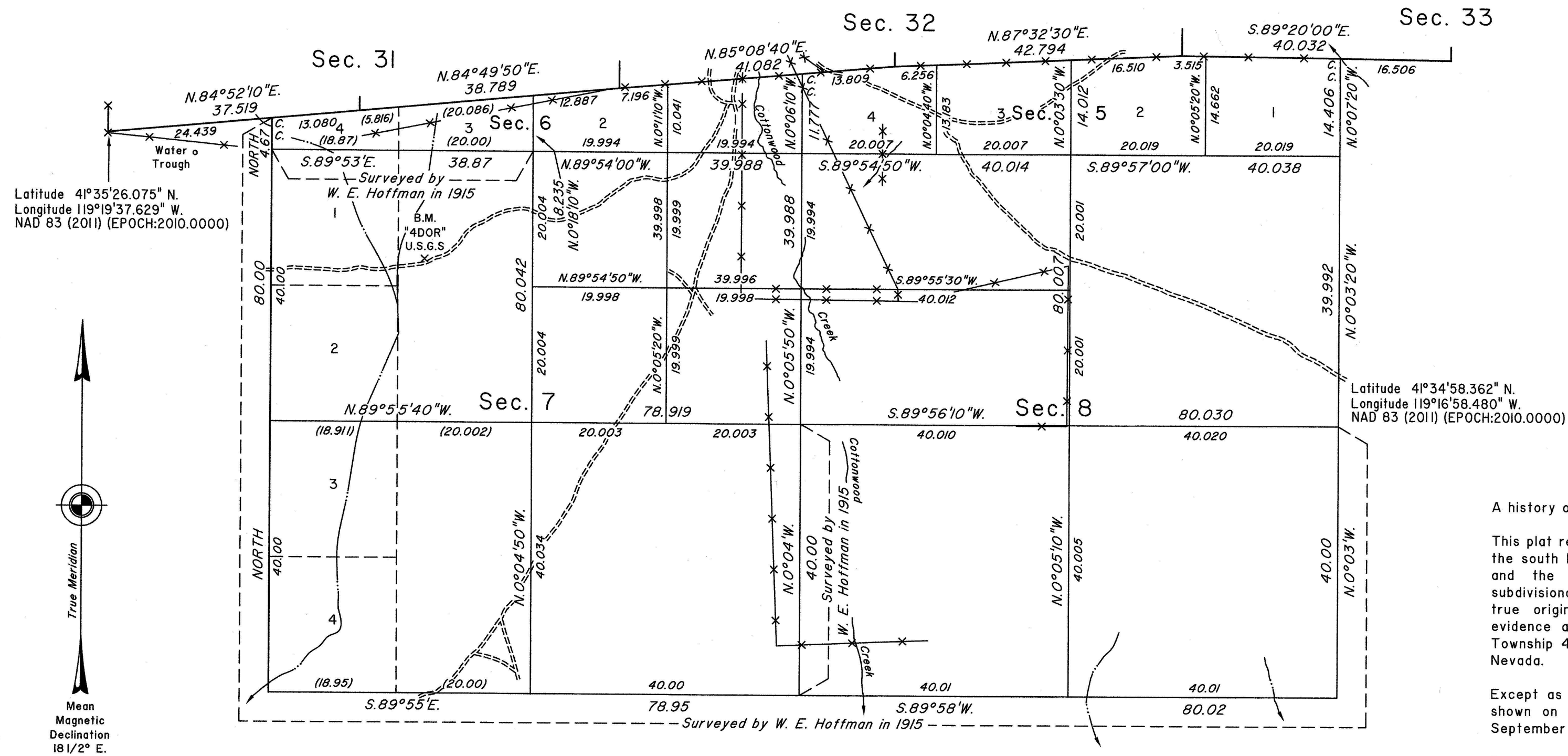


TOWNSHIP 42 NORTH, RANGE 24 EAST, OF THE MOUNT DIABLO MERIDIAN, NEVADA
DEPENDENT RESURVEY AND SUBDIVISION

OFFICIALLY FILED
NEVADA STATE OFFICE
at 10:00 AM on
MAR 04 2016



A history of surveys is contained in the field notes.

This plat represents the dependent resurvey of a portion of the south boundary of Township 43 North, Range 24 East; and the dependent resurvey of a portion of the subdivisional lines designed to restore the corners in their true original locations according to the best available evidence and the subdivision of sections 5, 6, 7 and 8, Township 42 North, Range 24 East, Mount Diablo Meridian, Nevada.

Except as indicated hereon, the lottings and areas are as shown on the plat approved June 19, 1917 and accepted September 25, 1917.

Survey executed by Joseph J. Johnson, Cadastral Surveyor and Mark G. Petrosine, Surveying Technician, beginning November 5, 2014 and completed November 21, 2014, pursuant to Special Instructions dated October 6, 2014, for Group No. 938, Nevada.

UNITED STATES DEPARTMENT OF THE INTERIOR
BUREAU OF LAND MANAGEMENT

Reno, Nevada February 28, 2016

This plat is strictly conformable to the approved field notes, and the survey, having been correctly executed in accordance with the requirements of law and the regulations of this Bureau, is hereby accepted.

For the Director

Chief Cadastral Surveyor for Nevada

