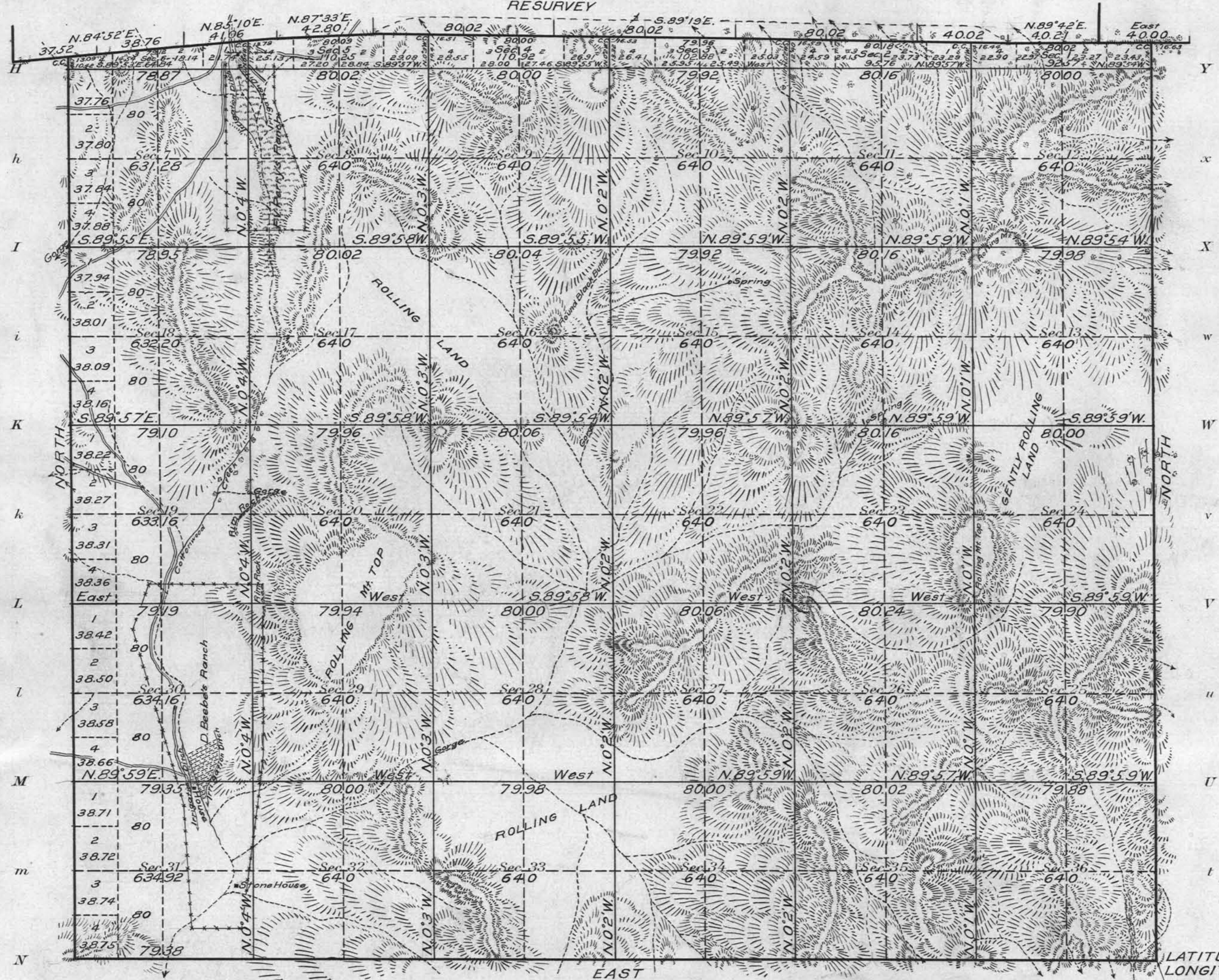


Township No. 42 North, Range No. 24 East of the Mt. Diablo Meridian, Nevada.

g Sec.31 Sec.32 Sec.33 Sec.34 Sec.35 Sec.36 Sec.37



Areas in Acres	
Public Land	19,742.94
Indian Reservation	
Indian Allotments	
Mineral Claims	
Water Surface	
Total Area	19,742.94

LATITUDE, 41° 31' N.
LONGITUDE, 119° 13' W.
Scale 40 Chains to an inch
Mean Magnetic Declination 20° 25' E.

Surveys Designated	By Whom Surveyed	Group			When Surveyed			
		No.	Date of Instructions	Mts.	chs.	lks.	Begun	Completed
S. Bdy. T. 43 N., R. 24 E.	Walter E. Hoffman	35	May 12, 1915	6	00	4.3		
S. " T. 43 N., R. 25 E.	" " "	"	" " "	0	40	00		
W. Boundary	" " "	"	" " "	5	4	67	August 6, 1915	Sept. 13, 1915
S. " "	" " "	"	" " "	5	79	38		
E. " "	" " "	"	" " "	5	11	74		
Subdivision	" " "	"	" " "	55	59	28		

The above map of Township No. 42 N., Range No. 24 E. of the Mt. Diablo Meridian, Nevada is strictly conformable to the field notes of the survey thereof on file in this office, which have been examined and approved.

U. S. Surveyor General's Office.
Reno, Nevada, June 19, 1917

John B. Sullivan
Surveyor General.

T 42 N. R. 24 E
V D 77