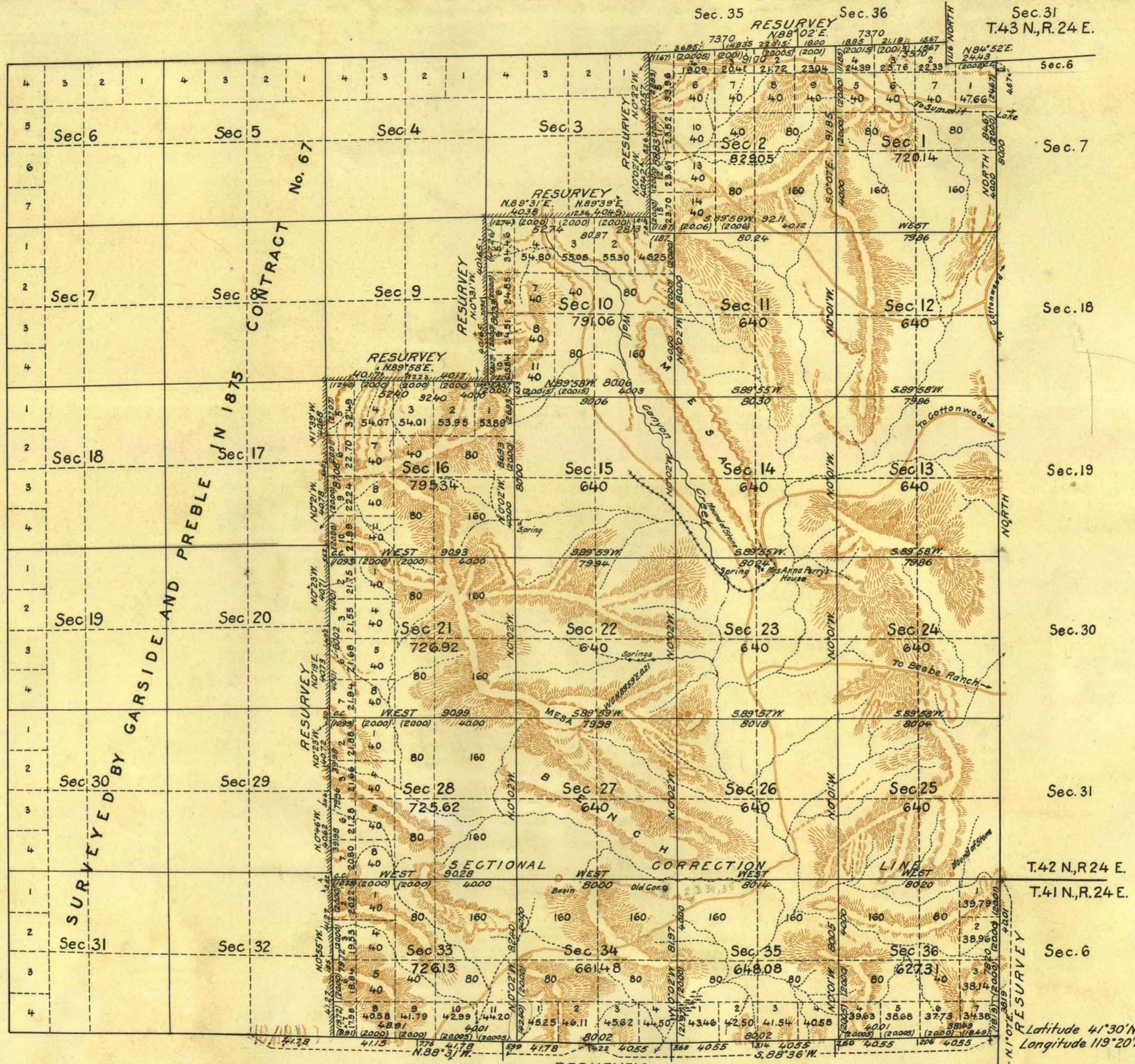


TOWNSHIP N^o 42 NORTH RANGE N^o 23 EAST MOUNT DIABLO MERIDIAN NEVADA



Scale: 40 Chains to an Inch. Area Surveyed, 14291.13 Acres.

LINES DESIGNATED	BY WHOM SURVEYED	NO	GROUP DATE	MILEAGE		WHEN SURVEYED	
				MLS.	CHS.	BEGUN	COMPLETED
Exterior	Emil Voigt and Walter	101	June 6, 1922 and	7	46.00	June 22, 1925	June 7, 1927
Subdivisional	H. Good	"	July 31, 1925	31	17.38	June 13, 1925	June 7, 1927
Exterior	W.E. Hoffman	35	May 12, 1915	5	29.10	Aug. 13, 1915	Aug. 19, 1915
Miscellaneous							

Office of U.S. Supervisor of Surveys
 Denver, Colorado, Sept. 13, 1929.
 The above plat of Township No. 42 North Range No. 23 East of the Mount Diablo Meridian, Nevada is strictly conformable to the field notes of the survey thereof which have been examined and approved.

Walter D. Parnell
 U.S. Supervisor of Surveys.

DEPARTMENT OF THE INTERIOR
 GENERAL LAND OFFICE
 Washington, D.C., Oct. 29, 1929.
 The survey represented by this plat having been correctly executed in accordance with the requirements of law and the regulations of this office, is hereby accepted.

W.D. Parnell
 Acting Assistant Commissioner.

"Old Cor" in Sec. 24 is
 OC Secs 2, 3, 4, 5
 See page 81 (61)
 of notes.

J.R.C.