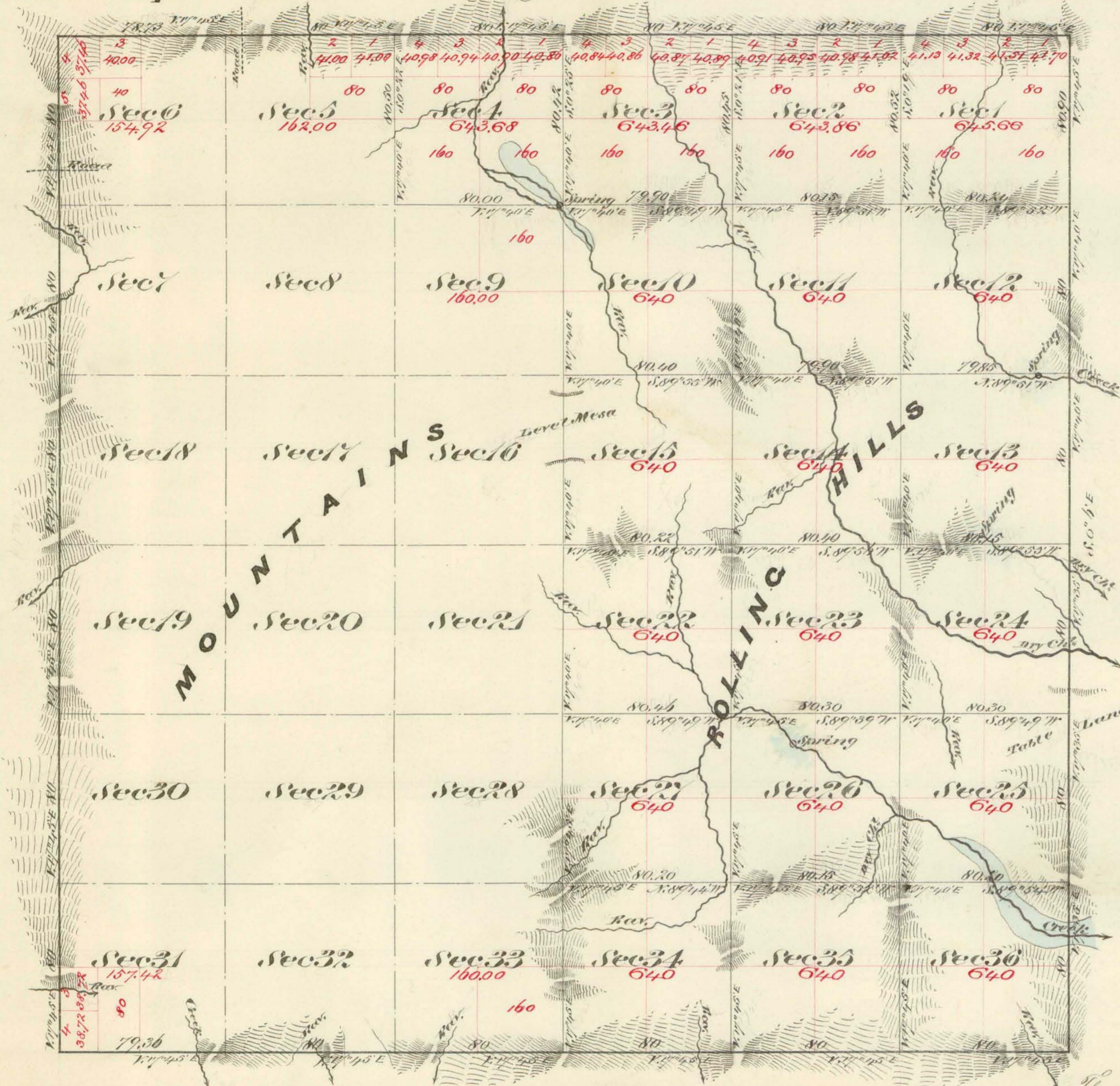


Township N<sup>o</sup> 42 North

Range N<sup>o</sup> 22 East

Mount Diablo Meridian



Aggregate Area of Public Land (Surveyed) 12,971.00 Acres  
 Estimated " " Mountains (unsurveyed) 10,042.58 "  
 Aggregate 23,013.58 "

Commenced February 12<sup>th</sup> 1875  
 Completed February 17<sup>th</sup> 1875

Surveys Designated	By Whom Surveyed	Date of Contract	Am't of Survey Mts. also Mts.	When Surveyed
N. S. W. Boundaries	G. W. Gause & Co. Probrs	Nov <sup>r</sup> 18 <sup>th</sup> 1873	17 78 09	1873
East Boundary	" " " " "	Dec <sup>r</sup> 31 <sup>st</sup> 1874	6 00 90	February 1875
Subdivision Lines	" " " " "	" " "	35 04 71	" "

The above Map of Township N42 North Range N22 East Mount Diablo Meridian is strictly conformable to the field notes of the Surveys thereof on file in this Office, which have been examined and approved  
 U. S. Surveyor General's Office  
 Virginia City Nevada  
 April 17<sup>th</sup> 1875