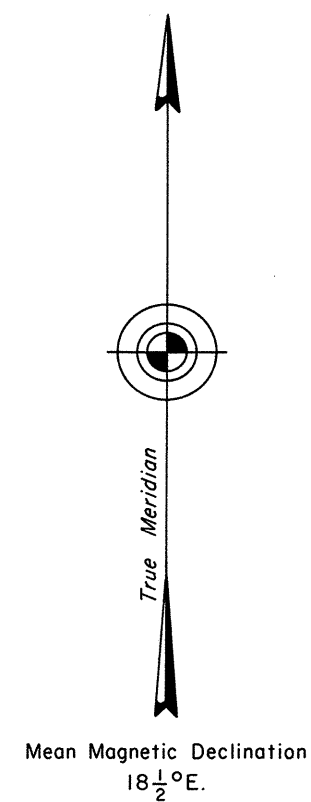
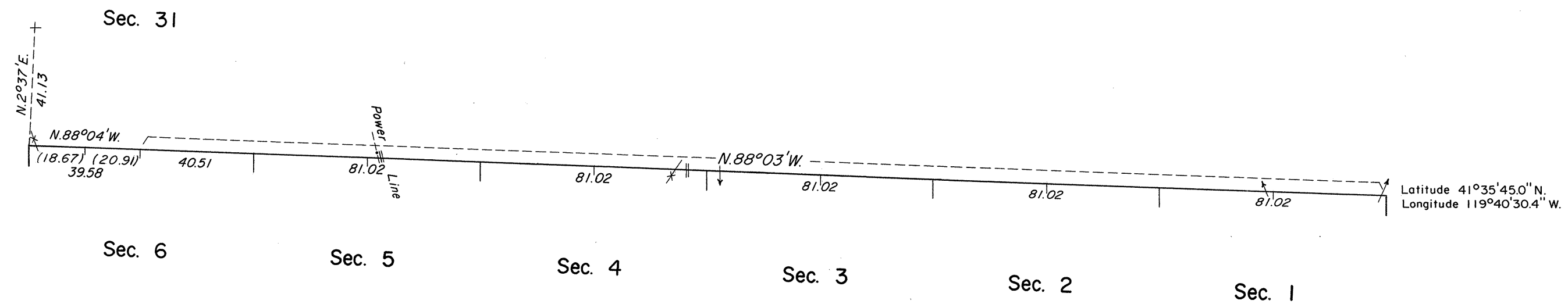


TOWNSHIP 42 NORTH, RANGE 20 EAST, OF THE MOUNT DIABLO MERIDIAN, NEVADA

DEPENDENT RESURVEY



The history of the earlier survey is contained in the field note record.

This plat represents a dependent resurvey of the north boundary of T. 42 N., R. 20 E., Mount Diablo Meridian, Nevada, designed to restore the corners in their original locations according to the best available evidence.

Survey executed by John D. Sorensen, Cadastral Surveyor, August 5, 1968 to August 3, 1969, under Special Instructions dated April 29, 1968, for Group No. 459, Nevada.

UNITED STATES DEPARTMENT OF THE INTERIOR
BUREAU OF LAND MANAGEMENT
Washington, D.C. August 28, 1972

This plat is strictly conformable to the approved field notes, and the survey, having been correctly executed in accordance with the requirements of law and the regulations of this Bureau, is hereby accepted.

For the Director

Clark L. Luman

Chief, Division of Cadastral Survey

