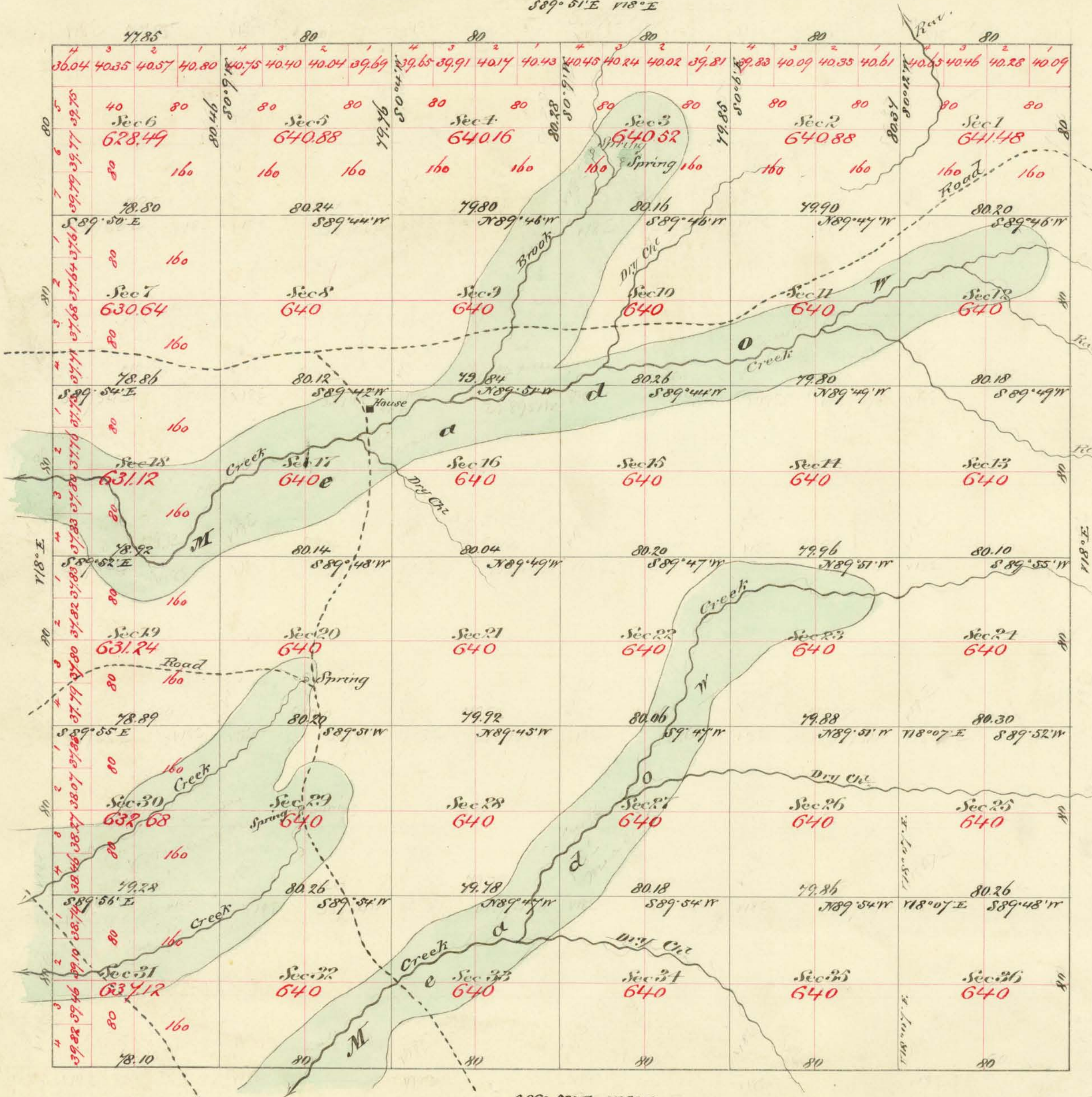


Township N^o 42 North

Range N^o 20 East

Mount Diablo Meridian

S89° 51' E 118° E



Aggregate Area of Public Land Surveyed 22,995.61 Acres

Commenced Dec. 6th 1878
Completed " 11th

Subdivisions not otherwise noted run with Var. 15' East

Surveys designated	By whom surveyed	Date of Contract	Am ^t of Survey	When Surveyed	N ^o Com.
E. boundary	G. W. Crosside	Nov. 11 th 1876	4 - 00 - 00	1876	74
N. S. & N.	"	Oct. 29 th 1878	17 - 30 - 95	1878	85
Subdivisions	"	"	59 - 77 - 11	Dec "	"

The above plat of Township N^o 42 North Range N^o 20 East Mount Diablo Meridian is strictly conformable to the field notes of the survey there of on file in this office which have been examined and approved.
U. S. Surveyor General
Virginia City Nev.
January 22nd 1879

C. S. Davis

U. S. Surveyor General

0214

T 42 N, R. 20 E.

VP