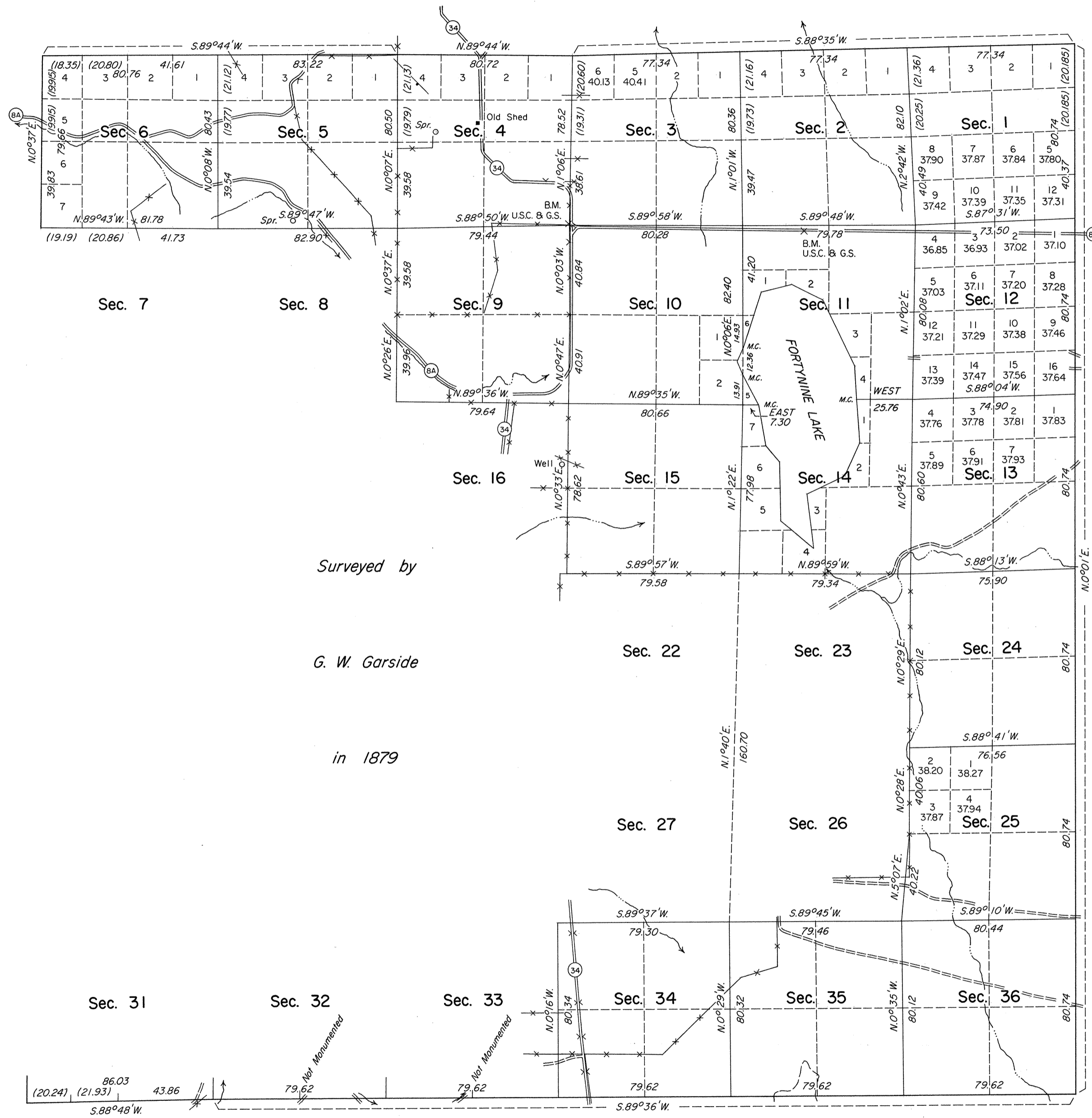


# TOWNSHIP 42 NORTH, RANGE 19 EAST, OF THE MOUNT DIABLO MERIDIAN, NEVADA

## DEPENDENT RESURVEY



History of the earlier surveys is contained in the field notes.

This plat represents a dependent resurvey of the east, south, and north boundaries, a portion of the west boundary, and a portion of the subdivisional lines of T. 42 N., R. 19 E., designed to restore the corners in their original locations according to the best available evidence.

Lottings and areas, except as shown hereon, are as shown on the plat approved July 2, 1879.

Survey executed by Ronald K. Baugh, Cadastral Surveyor, July 21 to October 14, 1980, under Special Instructions dated July 10, 1980, for Group No. 587, Nevada.

Surveyed by  
*G. W. Garside*

in 1879

UNITED STATES DEPARTMENT OF THE INTERIOR  
BUREAU OF LAND MANAGEMENT

Reno, Nevada

July 21, 1982

This plat is strictly conformable to the approved field notes, and the survey having been correctly executed in accordance with the requirements of law and the regulations of this Bureau, is hereby accepted.

For the Director

*Lael E. Bland*

Chief Cadastral Surveyor

Latitude 41° 30' 39.8" N.  
Longitude 119° 47' 31.5" W.

