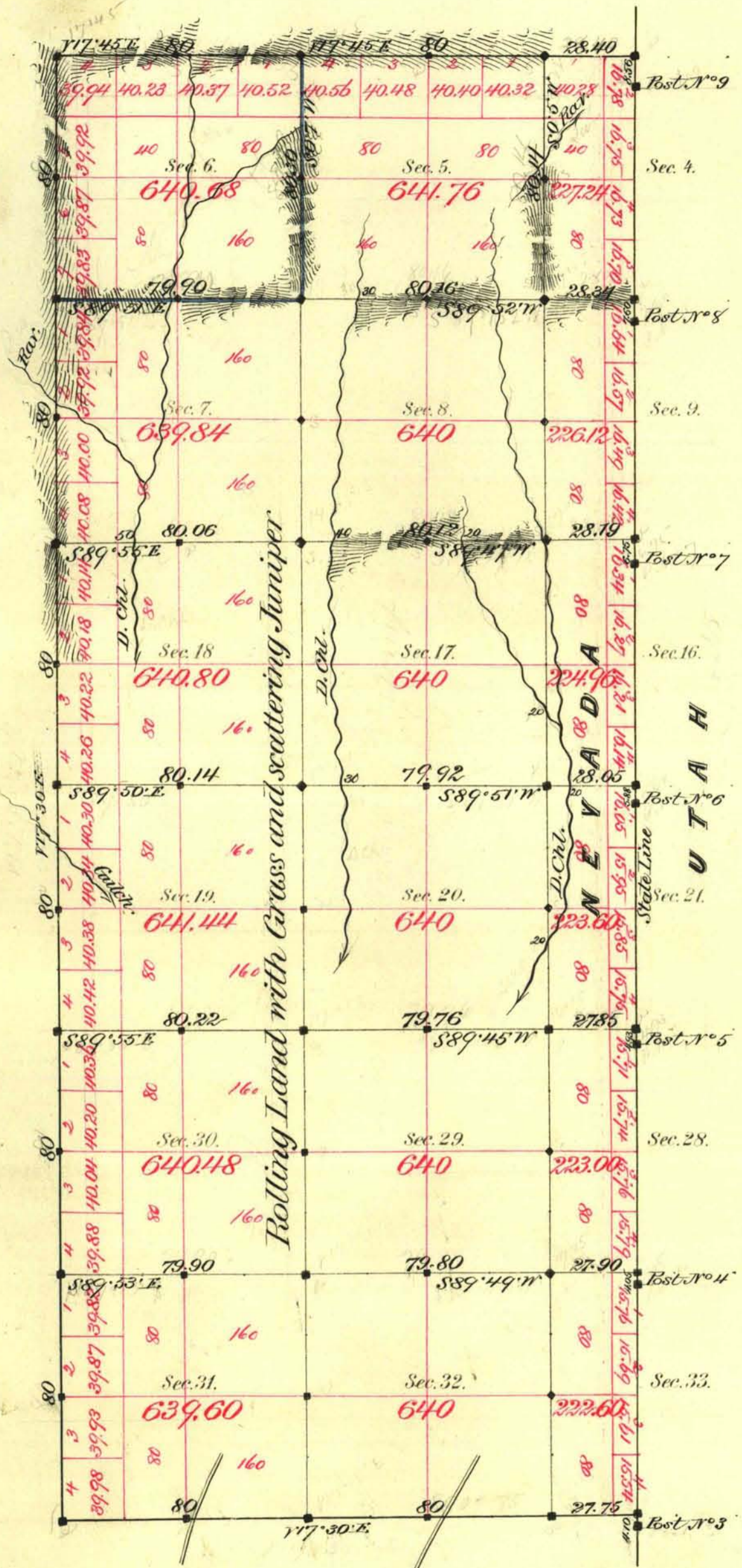


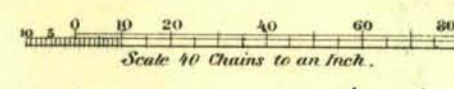
TOWNSHIP N^o 41 NORTH RANGE N^o 70 EAST MOUNT DIABLO MERIDIAN



Aggregate Area of Public Land Surveyed 9,082.12 Ac.

Commenced May 10th 1882
Completed " 15th

Subdivisions not otherwise noted run with a Var. of 17° 15' East.



Surveys Designated	By Whom Surveyed	Date of Contract	Amount of Surveys	When Surveyed
H. Bddy.	Amey & Biddle	April 9 th 1881	2-07-45	1881
State Line	S. E. James	Aug. 16 th 1870		1870
H. Bddy.	Monroe & McAllen	May 25 th 1881	6 00-00	1881
Johnson Block	"	April 10 th 1882	2-28-40	1882
Blue Hill	"	"	21-60-55	"
Connections on W. L.	"	"	2-00-20	"
	"	"	29-21	"

7th Cor. 119
120
134

The above Map of Township N. 41 North of Range N. 70 East Mt. Diablo Meridian is strictly conformable to the field notes of the survey thereof on file in this Office, which have been examined and approved.

Surveyor General's Office, }
New Nevada }
June 10th 1882 }
C. S. Davis }
Sur. Gen. Nev. }