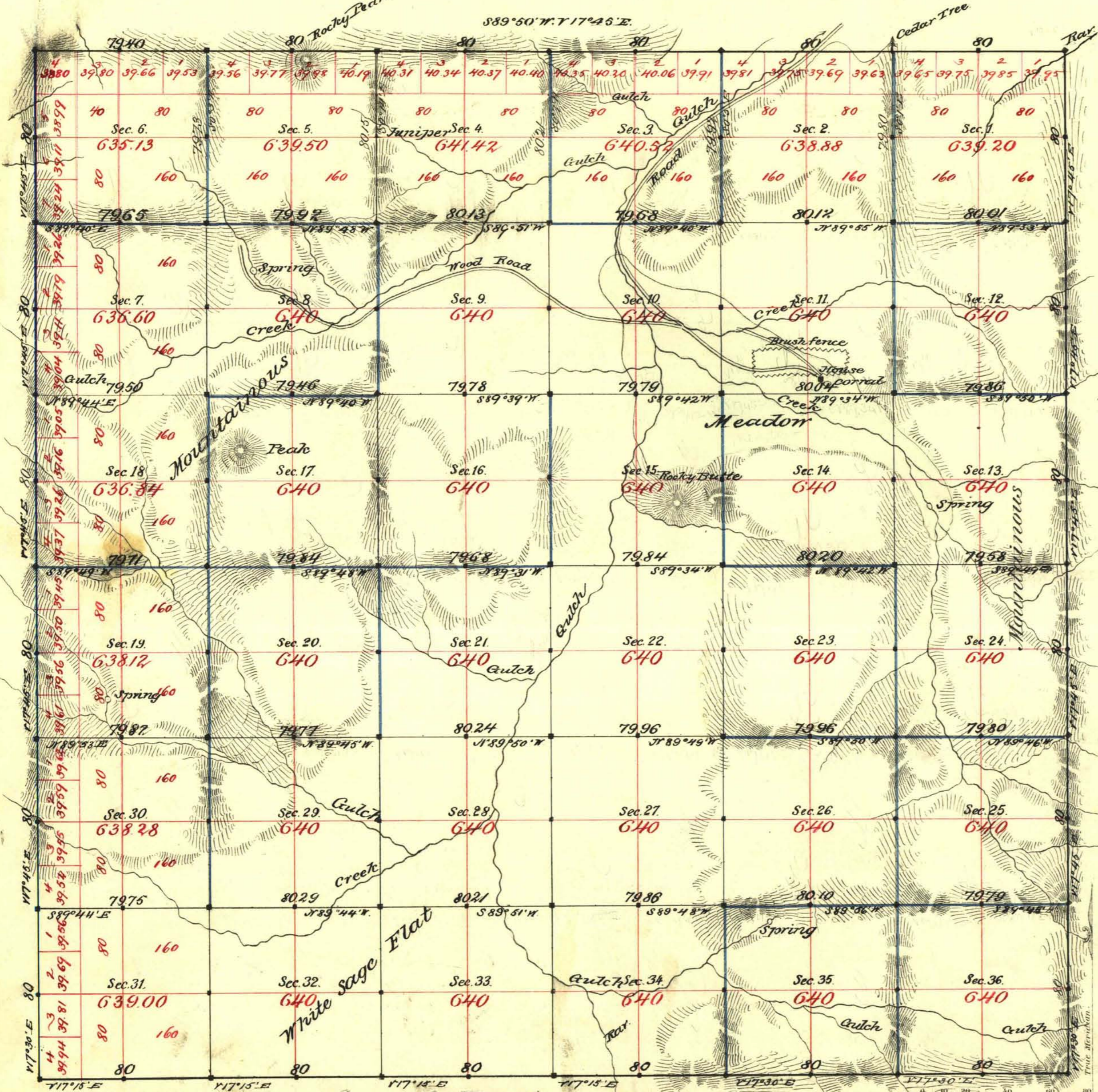


TOWNSHIP N^o 41 NORTH RANGE N^o 67 EAST MOUNT DIABLO MERIDIAN



Aggregate Area of Public Land surveyed 23023.49 Ac.

Commenced April 22nd 1881
Completed " 29th "

Subdivisions run with a Variation of 17'45" East.

Resur Cont 186 Sec connections T 40

Surveys Designated	By Whom Surveyed	Date of Contract	Amount of Surveys	When Surveyed
1	James L. Cook	April 9 th 1881	1/4 20 20	1881
2	Monter & Allan	January 15 th	1/4 40 00	"
3	"	March 25 th	1/4 40 00	"
4	Andrew H. Cook	"	29 78 83	April
5	"	"	29 78 82	"

20th Cont
119
113
120
"

The above Map of Township N^o 41 North of Range N^o 67 East
Mount Diablo Meridian is strictly conformable to the field
notes of the survey thereof on file in this Office, which have been examined and approved.
Surveyor General's Office,
Virginia City, Nevada }
June 30th 1881
E. J. Davis
Sur. Gen. Nev.